

# **OZ ROAMER**

**8 NEW SUV MODELS**  
**PROJECT PAJERO**

**7 4WD & AWD**  
**SUV REVIEWS**

**ATV NEWS**  
**& REVIEWS**



**6 CAMPER**  
**TRAILER &**  
**SLIDE ON**  
**CAMPER NEWS**  
**& REVIEWS**

**MOTORHOME &**  
**CARAVAN NEWS**

**WE RATE OVER**  
**150 4WD &**  
**AWD SUV'S**  
**FOR TOWING**  
**AND OFF-**  
**ROAD ABILITY**

**PLUS**

- COOKING WITH BRIANNA
- PRODUCT REVIEWS
- OZROAMER BUSINESS DIRECTORY
- LOTS MORE

# EDITORS COMMENTS & CONTENTS

Welcome to the OzRoamer Magazine for the months of March and April 2014. In line with the changing face of OzRoamer we are now producing a full online e-magazine. We have redesigned the magazine in line with the overwhelming requests from readers and subscribers. This is back to where we started many years ago with an online e-magazine. Its funny how tastes change.

Most e-magazines are simply the normal magazine placed online however the new format OzRoamer Magazine is specifically designed for tablets, e-readers and smart phones. Research shows that the majority of e-magazines are read on one or more of those pieces of hardware and so the older style magazines just don't work as well. The beauty of this style is that you don't have to scroll up and down the page to read in columns like a printed magazine. The articles just flow across the page in line with your normal reading patterns .

We start off with over 90 pages of information to help readers make more educated buying decisions. There are 8 new 4WD & AWD SUV models as well as 8 reviews on both SUV styles. We also take a trip to Tassie in an Avida Sapphire family caravan towed by the winner of the OzRoamer 7 seat 4WD under \$60,000 the Isuzu M-UX LST. Although it seems a while ago we attended the Tamworth Country Music Festival and had a chance to try the updated Toyota Hilux as well.

Also on the caravan front we have a look at an older pop top caravan that has had the suspension upgraded for outback travel. With many caravans and even some hybrid camper trailers out of the reach of families, this renovation by Brix Engineering might just be the way to go for economical outback touring with a family.

On the ATV front Polaris have just released their revolutionary new design the Sportsman ACE. This is sure to be a talking point for the other manufacturers. There is also another 5 pages of ATV news. We have a number of camper trailer and slide on camper reviews and we catch up on what is happening with the popular Project Pajero in the last few months.

In this edition we rate over 150 new 4WD & AWD SUV's for towing and off road ability, this is without question the most comprehensive rating in the country. If you need a product or service try our OzRoamer Business Directory listings.

This issue is just the beginning. Stay tuned for what we have planned in the coming months with regular features, places to go and stay, news and reviews on 4WD, AWD SUV's, camper trailers, slide on campers, caravans, off road motorhomes, camping equipment etc. In fact if you are thinking of travelling the outback of Australia, you cant afford to miss an issue.

If you like this new magazine style let us know, the OzRoamer magazine will be on sale every two months from March/April 2014. Cheers for now!



Rob Fraser

## CONTENTS

### 4WD & AWD SUV News & Reviews

[Jeep Wrangler Freedom](#)

[Honda CRV Diesel](#)

[Mitsubishi Triton Warrior LE](#)

[Isuzu X Runner D Max](#)

[BMW X4](#)

[Mitsubishi Outlander](#)

[BMW X5 xDrive25d](#)

[Mercedes Benz GLA Pricing](#)

[Audi Q3 2.0l TDI quattro](#)

[Holden Colorado LTZ 6 sp MT](#)

[Jeep Wrangler Rubicon 10th anniversary](#)

[Toyota third generation Kluger launch](#)

[Isuzu MU-X LST](#)

[Jeep Grand Cherokee Overland V6 Diesel](#)

[2014 Toyota Hilux SR5](#)

### Cooking with Brianna

[Cheats Lamingtons](#)

[Bacon and Egg Pie's](#)

### Slide on Campers News and Reviews

[Trayon 20th Anniversary Model](#)

[Carry me Camper Dual Cab Walk in Model](#)

[Trayon TMO Gen 111 Camper Trailer](#)

[Travel Mate Slide on Camper](#)

[Innovan Slide on Camper](#)

[Travelander GEO 2 Convert Camper](#)

[Trailer](#)

### Project Pajero

[KORR driving Lights](#)

[Ultimate Suspension Upgrade](#)

### Campervans & Motorhomes News and Reviews

[Fiat Ducato Dream Motorhome](#)

[Renault Traffic](#)

### Caravans News and Reviews

[Brix Engineering Viscount Renovation](#)

[Avida Sapphire Luxury Caravan](#)

### ATV Side x Side Quad Bike News & Reviews

[Honda's New TRX500FM1 & TRX500FM2](#)

[Honda's all new 2014 TRX420](#)

[Polaris UTE 570](#)

[Polaris Sportsman ACE](#)

[2014 Suzuki QuadSport Z50](#)

[Yamaha Viking 3 seater Side x Side](#)

[2014 Yamaha Grizzly 700 EPS ATV](#)

### Product News & Reviews

[Narva Inspection Lamp](#)

[Toyo 4X4 Tyre Boom](#)

[Toyota Hilux best selling 4WD](#)

### OzRoamer Product and Services Directory

### OzRoamer Business Directory

### OzRoamer Buyers Guide

**Editor** Rob Fraser | Editorial enquiries [ozroamer@ozroamer.com.au](mailto:ozroamer@ozroamer.com.au) **Sub Editor** Chloe Fraser

**Contributors** Rob Fraser, Anthony Hood, Pete Wilson, Vicki Fraser, Chloe Fraser, Steve Tierney, Brianna Fraser, Sean Rockford,

**Advertising enquiries:** [rob@ozroamer.com.au](mailto:rob@ozroamer.com.au)

OzRoamer E-Magazine Edition is published by OzRoamer Publishing Group, P.O. Box 305 Cherrybrook NSW 2126. The publishers believe that all information that is supplied in this magazine was correct at the time of printing. Prices are supplied from manufacturers. The publishers do not however guarantee that prices are correct and suggest that you make your own enquiries and are not liable for any information being correct. It is not possible to ensure that advertisements comply with the Trade Practices Act 1974 and therefore it is the responsibility of the person submitting the advertisement. The Publishers cannot be held responsible for any errors or omissions. Copyright: Material appearing in OzRoamer Pty Ltd. Publications is copyright and reproduction in whole or in part without written permission from the publisher is prohibited. OzRoamer Pty. Ltd. Publications. P .O.Box 305 Cherrybrook NSW 2126 A.B.N. 78 094 263 493

# BE CONFIDENT ON YOUR NEXT ADVENTURE

## INSIST IT'S GENUINE

Mitsubishi genuine parts and accessories are designed, engineered and manufactured to ensure a perfect fit and optimal performance, first time, every time as well as meet (and often surpass) stringent Australian Design Rules and Standards. This ensures optimal performance and safety for you and your loved ones, when you need it.



## GREAT VALUE

At Mitsubishi Motors we are committed to delivering value for money. We have a range of competitively priced mechanical parts which provide real value on Genuine Mitsubishi servicing, ensuring you have the best quality parts fitted to your vehicle. Below are some examples:

NP Pajero 3.2L Diesel	Mitsubishi Approved Part (RRP)	Selected Aftermarket Brands (RRP)	Saving
Clutch Kit - VS000366	\$726.00	\$797.00	<b>\$71.00</b>
Condenser - VS000582	\$257.40	\$377.00	<b>\$119.60</b>
Alternator Belt - VS000098	\$8.80	\$13.95	<b>\$5.15</b>
Fuel Filter - VS000471	\$24.20	\$30.50	<b>\$6.30</b>

If you choose Genuine Mitsubishi products, you can be confident that no matter where you are or where you go, you will be driving with the knowledge that your Pajero is fitted with Genuine parts and accessories that **perform "as the maker intended"**.



**DIAMOND  
GENUINE SERVICE  
ADVANTAGE**

With one of Australia's best service intervals, Mitsubishi Genuine Service means your vehicle can spend less time off the road and you pay for less services\*. Protect your investment by ensuring your Mitsubishi gets the specialist care that only Mitsubishi Genuine Service can deliver.

\*More frequent servicing is required on some specialist vehicles and vehicles operated under certain operating conditions.



## Jeep Salutes Army Heritage with Special Edition Wrangler

Jeep has released a special edition Wrangler (priced from \$35,000) that evokes the brand's army vehicle manufacturing legacy.

Wrangler Freedom is an enhancement of the Sport 3.6-litre V6 model, incorporating special styling cues and upgrades to both the interior and exterior.

It is available in two-door and four-door Unlimited variants, both of which offer Jeep's legendary off-road ability.

A large 'Freedom Star' decal – purposefully weathered to make it appear like those on the original Jeep army vehicles – appears on both Wrangler Freedom's bonnet and rear flank. The five-pointed star is symbolic of vehicles assigned to tactical units in the US armed forces.

Wrangler Freedom is powered by the iconic all-alloy Pentastar 3.6-litre V6 engine, which produces 209kW of power and 347Nm of torque while consuming just 11.4-litres per 100km in the combined cycle for the two-door variant.

Wrangler Freedom is available with either a six-speed manual or five-speed automatic transmission in both two and four door models, catering to all driving styles and preferences.

Jeep's Command-Trac® system enhances Wrangler Freedom's superior off-road performance, delivering equal power to all wheels for maximum traction. It also has 223mm of ground clearance, 35-degree approach angle and 22-degree breakover angle for negotiating the toughest terrain.

Jeep Wrangler Freedom was available in Australian showrooms from early February.





## Honda's CR-V Diesel Has Landed

The much-anticipated Honda CR-V Diesel has landed in Australia, "This new diesel variant completes the CR-V offering, which includes a choice of two and four-wheel drive, manual and automatic transmissions as well as the option of our Advanced Driver Assist System (ADAS) in the petrol 4WD VTi-L,

The CR-V DTi-S and DTi-L feature a 2.2 litre turbo diesel engine delivering 110kW of power @ 4000rpm and 350 Nm of torque @ 2000-2750 rpm.

New to the diesel is Honda's Real Time 4WD with Intelligent Control System, for extra grip on uneven or slippery surfaces. It also features Hill Descent Control (automatic only) that works in tandem with Vehicle Stability Assist to provide even more security and connection with the road.

The DTi-S features Vehicle Stability Assist (VSA) with Traction Control, Anti-lock brakes (ABS) and Electronic Brakeforce Distribution (EBD), Trailer Stability Assist (TSA), tilt and telescopic steering adjustment, MacPherson strut front and multi-link rear suspension and Hill Start Assist with Transmission Shift Lock (automatic transmission only).

One of the CR-V Diesel's strongest features is the outstanding fuel economy. The manual DTi-S has a combined cycle of just 5.8 litres/100 kilometres and 151g/km CO<sub>2</sub> (manual transmission) and the DTi-L has a combined cycle of 6.9 litres/100km and 182g/km CO<sub>2</sub>.

Priced from a Manufacturer's List Price of \$38,290 the Honda CR-V Diesel is on sale now in Honda showrooms across the country.





## Mitsubishi Triton Warrior Limited Edition

Mitsubishi Motors Australia has announced details of its new limited edition GLX-R Warrior model alongside additional safety and convenience features made standard across the 2015 model year Triton range.

Triton GLX-R Warrior will come with a range of extra technology and comfort features, including differential lock, Mitsubishi's advanced Multi Communication System with USB input, voice recognition and Bluetooth®, iPhone® and iPod® connectivity, 8 speaker audio system and MPSS power amplifier, black leather seat trim and 6-way power adjustable driver's seat.

The Warrior's exterior styling is complemented by a Genuine Accessory alloy front nudge bar, flush fit soft tonneau cover and Warrior decal fitted to the front doors. It will be available in Charcoal, Cool Silver, Ironbark and White exterior colours. A Genuine Accessory front protection bar is also available.\* Driveaway pricing for the limited edition Warrior is \$43,990 with five-speed manual transmission, while the five-speed automatic is \$45,990. Mitsubishi will produce just 200 special edition Triton GLX-R Warriors, available nationally.

Meanwhile, changes to 2015 model year Triton include an upgraded audio system across all models and Bluetooth® functionality, mobile phone and iPod hands free operation with voice recognition and steering wheel-mounted audio controls on all GL and GLX models, ensuring the features are now standard across the Triton model range. All double cab Triton models will be equipped with two ISOFIX child seat anchorage points, while GLX-R Triton gains a black interior colour theme.

The Triton GLX-R Warrior and 2015 model year Triton range are currently available from Mitsubishi dealers nationally.

*\*Available as an alternative to the alloy nudge bar at an additional cost*





## Isuzu UTE Launches Limited Edition X-Rated D-MAX

Isuzu UTE Australia has introduced a limited edition D-MAX to its one-tonne ute line-up, the 2014 X-RUNNER.

On sale from March 17, just 660 units of the X-RUNNER will be available. Based on an Isuzu D-MAX 4x4 LS-U, the 2014 X-RUNNER comes in two striking metallic colours - pearlescent white and black mica, with unique contrasting striping and decals.

Giving the X-RUNNER further street-cred, the X-RUNNER also features additional exterior styling in the form of gun metal grey alloy wheels and side steps, front and rear body kit, black sports bar and tub liner.

While the interior receives red and black two-tone seat trim, red contrast steering wheel stitching and a high-gloss piano black dash trim.

The X-RUNNER is covered by Isuzu UTE's five-year 'bumper to bumper' warranty and five-year Roadside Assistance and has a five-star ANCAP safety rating.

Available in both auto and manual transmissions, the 2014 X-RUNNER is priced from \$46,490 drive-away (manual).





## All New BMW X4

The new BMW X4 is based on the technical blueprint of the BMW X3, but displays a sporting character very much its own and takes dynamics to another new level. That much is clear when you view the new model head-on.

The driver and front passenger sit 20 millimetres lower than in the BMW X3. In conjunction with the two-seat look of the rear, this accentuates the coupe character of the new BMW in the classy and exclusive interior as well. At the same time, the X4 offers generous levels of space for up to five people and – thanks to the standard 40:20:40 split rear seat backrest – impressive variability.

In keeping with the vivacious character of the new BMW X4, customers can choose from three petrol engines and a trio of diesel units from the BMW EfficientDynamics engine family, whose output ranges from 135 kW/184 hp to 230 kW/313 hp. All the engines meet the EU6 exhaust gas standard. The BMW TwinPower Turbo technology of the state-of-the-art engines offers a promise of superb performance married with exceptionally low fuel consumption.

Among the highlights in the new BMW X4 are the full-colour BMW Head-Up Display, the anti-dazzle High Beam Assistant, and Driving Assistant Plus including Lane Departure Warning, Active Cruise Control with Stop & Go function, preventive pedestrian protection and a Collision Warning system, which applies the brakes with anything up to maximum stopping power as required. Added to which, the optional ConnectedDrive Services also allow drivers to sign up to innovative services such as Real Time Traffic Information (RTTI), the Concierge Service and Remote Services. Facebook, Twitter, AUPEO! personalised internet radio and music platforms like Napster and Deezer have also been optimised for in-car usage and can be accessed easily on board the BMW X4.





## New-look Mitsubishi Outlander SUV Range

Mitsubishi Motors Australia has updated its Outlander SUV range with more aggressive styling, fresh interior trims, retuned suspension and a new emergency stop signal feature, while petrol-powered Outlander models gain interior NVH improvements and upgraded CVT transmission.

Mitsubishi's new and improved mid-sized Outlander SUV adopts a sportier front and rear design to give it a stronger, more dynamic on-road presence. Leading the Outlander revisions is a new twin-blade horizontal grille that sits flush with the bonnet edge. A silver skid plate and fog lamps with chrome bezels strengthen the sculptural form of the front guards and bumper bar. Outlander also gains a rear silver skid plate, along with black wheel arches that highlight the alloy wheels and silver roof rails.

Mitsubishi has added trim changes to freshen Outlander's interior. The entry level Outlander ES features a new black cloth seat trim, while LS models gain black cloth seat trim with leather inserts and chrome door handles. Aspire is now fitted with a textured silver garnish for the instrument panel and front doors.

Mitsubishi has fitted the 14.5 model year Outlander with Emergency Stop Signal (ESS) – a feature that flashes the hazard warning lights under heavy braking. The new active safety feature adds to Outlander's five-star rating, seven airbags, rear parking sensors, reverse camera, Active Stability Control, Re-inforced Impact Safety Evolution (RISE) body and Hill Start Control. Forward Collision Mitigation and Adaptive Cruise Control are standard on Aspire.

Also updated at 14.5 model year is Outlander's suspension calibration, which has been adjusted with a new spring mount isolator for improved roll control and primary ride giving more balance in cornering, particularly in mid-corner stability. Overall vehicle dynamics are also enhanced through retuned shock absorbers and a unique damper tune.





## The new BMW X5 xDrive25d and X5 sDrive25d

Hot on the heels of the launch of the all-new BMW X5 in November 2013, BMW Group Australia has announced the addition of three engines and four new variants to the model's line-up. In a move guaranteed to increase the SAV's appeal and attract an ever-increasing number of Australian drivers, the third-generation X5 is now available with a new entry level four-cylinder diesel variant, the BMW X5 xDrive25d. In addition, the company has announced the first-ever rear-wheel drive X5 variant, the BMW X5 sDrive25d.

The engine powering the new four-cylinder diesel variants uses two turbochargers and common rail direct injection to produce maximum output of 160 kW and 450 Nm of torque and teams up with a standard eight-speed automatic gearbox. With an average fuel consumption in the EU test cycle of just 5.8 litres per 100km for the BMW X5 sDrive25d and 6.0 litres per 100km for the BMW X5 xDrive25d these new models combine all the outstanding attributes of the new BMW X5 with even lower fuel consumption and emissions.

The BMW TwinPower 3.0-litre diesel engine with two turbochargers powering the BMW X5 xDrive40d boasts increased power output and substantially improved fuel consumption over its predecessor. With 230 kW (+5 kW) and 630 Nm (+30 Nm) the new BMW X5 xDrive40d sprints to 100 km/h from standstill in a time of 5.9 seconds (-0.7 seconds) and consumes only 6.2 litres per 100km on the combined cycle (-1.3 litres per 100km). Both the BMW X5 sDrive25d and the BMW X5 xDrive25d share the same impressive standard specification with high-end features well in excess of the entry level X5 30d in the previous generation.

The highest level of safety is ensured with the full suite of airbags and stability control systems (sDrive excludes Hill Descent Control) and the active protection package with the attention assist feature which analyses driving behaviour and advises when it is time to take a break. Visibility and awareness for the driver is provided by the inclusion of Bi-Xenon headlights, LED front fog lights anti-dazzle interior rear view mirror, front and rear Park Distance Control, rear view camera, rain sensor and automatic headlight operation. Occupants will also enjoy a very high level of comfort and convenience with standard Dakota leather upholstery, front seats featuring full electrical adjustment and memory function, two-zone climate control system, heat/sun protection glazing and automatic tailgate operation. Also included are the Navigation system Professional with iDrive Touch controller and voice control, internet functionality, HiFi loudspeaker system and Bluetooth with extended functionality including audio streaming. All new BMW X5 models are covered by BMW's Condition Based Service program.

### BMW X5 Australian Pricing\*:

<b>BMW X5 sDrive25d</b>	\$82,900	<b>BMW X5 xDrive40d</b>	\$115,900
<b>BMW X5 xDrive25d</b>	\$87,900	<b>BMW X5 xDrive50i</b>	\$133,900
<b>BMW X5 xDrive30d</b>	\$99,900	<b>BMW X5 M50d</b>	\$147,900*
<b>BMW X5 xDrive35i</b>	\$106,900		

\*Manufacturer's Recommended List Price is shown and includes GST and Luxury Car Tax (LCT) - if applicable, but excludes dealer charges, stamp duty, statutory charges and on-road charges, which are additional and vary between dealers and States/Territories. Customers are advised to contact their nearest BMW dealer for all pricing inquiries.



## All-new Mercedes-Benz GLA-Class – Pricing Announced

Mercedes-Benz Australia/Pacific has announced pricing for the all new GLA-Class. Incorporating a new youthful, muscular coupé-inspired design, the GLA-Class makes a dynamic statement in the fast growing compact SUV segment.

“Our new GLA-Class reinterprets the compact SUV segment. Continuing the success of our range in the compact class, the GLA broadens our offering to a youthful, more dynamic target market.” said Horst Von Sanden, CEO and Managing Director, Mercedes-Benz Cars Australia/Pacific. “Its expressive design, practicality and versatility, and superb performance will ensure that the GLA-Class is highly desired in our local market.”

Progressive in design, serene in day-to-day motoring and with off-road capabilities, this compact model fits perfectly into the urban lifestyle. It light-footedly masters all day-to-day challenges and is also robust enough for off-road excursions in the form of the GLA 250 4MATIC. The GLA 200 CDI delivers a maximum output of 100kW and 300Nm of torque from the 2.2L 4-cylinder turbocharged diesel engine, while producing an outstanding fuel consumption of just 4.6L/100km (combined). The GLA 250 4MATIC is the first Mercedes-Benz SUV to feature the new generation 4MATIC system and utilises a 2.0L 4-cylinder direct injection turbocharged engine to produce 155kW and 350Nm of torque. Fusing outstanding performance with exceptional economy, the GLA 250 4MATIC consumes just 7.0L/100km (combined).

In addition to the A 45 AMG and CLA 45 AMG, the Mercedes-Benz GLA 45 AMG is the third compact model to offer the world’s most powerful series production 4-cylinder turbocharged engine, delivering a maximum output of 265kW and up to 450Nm of torque. The performance-oriented variable AMG 4MATIC all-wheel drive system as standard provides perfect traction and dynamic performance, accelerating the GLA 45 AMG from 0 – 100km/h in just 4.8 seconds.

The all new Mercedes-Benz GLA-Class features a host of exceptional features as standard on the range including 18” Wheels, Becker® MAP PILOT Navigation, an electronically operated EASY-PACK tailgate, THERMOTRONIC dual-zone climate control, Active Parking Assist and a reversing camera. In addition, the GLA 250 4MATIC incorporates Heated Electric Front Seats with Memory Function, Intelligent Light System, 19” Wheels and a Panoramic Electric Sunroof. The GLA 45 AMG also includes 20” AMG Wheels, AMG Sports Suspension, AMG Night Package, AMG High-Performance Braking System, COMAND Navigation and a Harmon Kardon® Logic 7® surround sound system as standard. The GLA-Class will also arrive with exceptional safety features as standard including COLLISION PREVENTION ASSIST, Blind Spot Assist, PRE-SAFE® accident anticipatory system, Attention Assist and Active Bonnet. The GLA 45 AMG will also include DISTRONIC PLUS and Lane Keeping Assist as standard.

The new GLA-Class will be on sale in Australia from April 2014. Sale prices will be as follows:

- GLA 200 CDI: \$47,900 (MRLP)
- GLA 250 4MATIC: \$57,900 (MRLP)
- GLA 45 AMG: \$79,900 (MRLP)

the MRLP includes GST and any LCT applicable to the base / standard specification model but EXCLUDES DEALER DELIVERY AND ALL ON ROAD COSTS such as, for example, registration fees, stamp duty, CTP

**OZ ROAMER**

# **CAMPER TRAILER & SLIDE ON CAMPER BUYERS GUIDE 2014**



**A-Z OF BUYING  
A CAMPER TRAILER**

**A-Z OF BUYING  
A SLIDE ON CAMPER**

**OZROAMER  
DIRECTORY**

**4WD VS AWD FOR  
TOWING**

**TOWING GUIDE**

**NOW INCLUDES  
COMPACT HYBRID  
4WD CAMPERS**

**AUSTRALIAN MADE  
VS IMPORTED  
MYTHS**

**CHOOSING A  
TOW VEHICLE**

**POWER VS TORQUE  
FOR TOWING**

**WE RATE OVER 150  
4WD & SUV'S FOR  
TOWING & OFF ROAD  
ABILITY**



## Trayon 20 Year Anniversary Model Offer

Trayon is 20 years old and in that time they have built and sold 845 campers for adventures in Australia and the World. To celebrate this industry unique milestone, Trayon and RedArc – both proudly Australian, have joined forces through the Ashdown distribution chain to offer 20 specially fitted campers. If you order any model Trayon camper in a “[Diesel Deluxe](#)” grade you will receive a fitted RedArc – “Smart Start” 15amp battery management system (BMS1215S2) at no extra charge!

The RedArc BMS is an optional extra upgrade to all Trayon models that normally costs \$1690.00 but if you order a “Diesel Deluxe” camper during the 20<sup>th</sup> anniversary promotion period you will get a RedArc BMS built-in absolutely free.

The RedArc BMS is an “All-in-one” battery management system that incorporated all of your charging needs (240V-12V-PV) in one device that also gives you a handy remote face read out on all your battery related information.

### T&C's=

*The offer is only available in a “Diesel Deluxe” grade Trayon 1830/1980/2100 or Dual-cab. There are only 20 campers available, once sold there will be no more 20th Anniversary models available. The RedArc BMS will still be available during the promotional time in “Standard” and “Deluxe” grade Trayon 1830/1980/2100 or Dual-cab as an optional-extra priced at \$1690. This promotion started on January 1 and will be open until all 20 campers are sold.*





## Carry Me Camper Dual-Cab & Extra Cab Tailgate Walk In Camper Model

Candy Canvas have released their Dual-Cab Walk-In Camper. This product has been a long time in the making due to their desire to maintain quality and ease of use.

The Dual-Cab Walk In is quick and easy to set-up, with a simple set-up time of 3min and a complete set-up time of 5min.

Weight is always an issue and even with a suspension upgrade, dual cab vehicles are only capable of a specified pay load. It is important to be able to carry all of your travelling needs with the camper and not have to make sacrifices just to be able to stay under your GVM . The Dual Cab Tailgate Walk in model camper weight is 400kgs.(including jacks)

The quality is obvious as it is in all Candy Canvas products, along with simple yet functional design. This manifests itself in minimising moving parts and where possible using mechanical rather than electrical products. eg, the water pump and little features like enough room to sit u in bed and read etc.

All their campers have high quality workmanship coupled with high quality materials over 22 years and are still manufactured in Australia, using predominantly Australian made materials.

The Dual Cab Walk-In Camper is another quality product from Candy Canvas which has had a lot of thought and design go into. If you take this camper on holiday you will spend more time enjoying your destination and less time worrying about setting up camp.





**TRAYON TMO GEN III CAMPER TRAILER**

# TRAYON TMO GEN 3 CAMPER TRAILER

by Rob Fraser



I remember the first time I took notice of a Trayon Camper was at Cape Leveque in the Northern Western tip of Australia back about 10 years ago. As you do I stopped for a chat about the rig and was impressed at just how happy this bloke was with his purchase. Now we all justify our buying decisions but this chap was positively beaming.

Trayon have transferred that quality of construction and customer satisfaction to their latest innovation, the TMO Camper. TMO stands for Trailer Mount Option. Yes the doyen of Slide on Campers has finally made a camper trailer. But as you would expect there is a difference. The Trayon TMO Gen 3 is two trailers in one. It allows buyers who don't have a Ute to take advantage of the Trayon Slide on Camper system and provides a very handy flat deck trailer as well. The TMO has a separate shower and toilet up



front and a flat aluminium tray at the rear that has a 1 tonne load capacity. This can be used for anything from taking rubbish to the tip, helping a mate move and taking your quad bike to your favourite 4WD camping spot and still have the luxury of a shower and toilet. Up front there is a huge storage area for all your needs followed by a pop-up shower and toilet. This is an ingenious idea however taller campers will feel a little cramped but you have the facility there and it works well. In addition there are 4 very handy under-body lockers and a pull out drawer at rear.

# TRAYON TMO GEN 3 CAMPER TRAILER

by Rob Fraser

The chassis is made from sturdy 150x50x3mm hot-dip galvanized steel with a single piece thru rail for extra strength. The hitch is a 4x4 articulating 2T Hyland including handbrake. Honestly that is the best off road hitch there is. It allows all the articulation you would possibly need and is easy to connect in any circumstance.

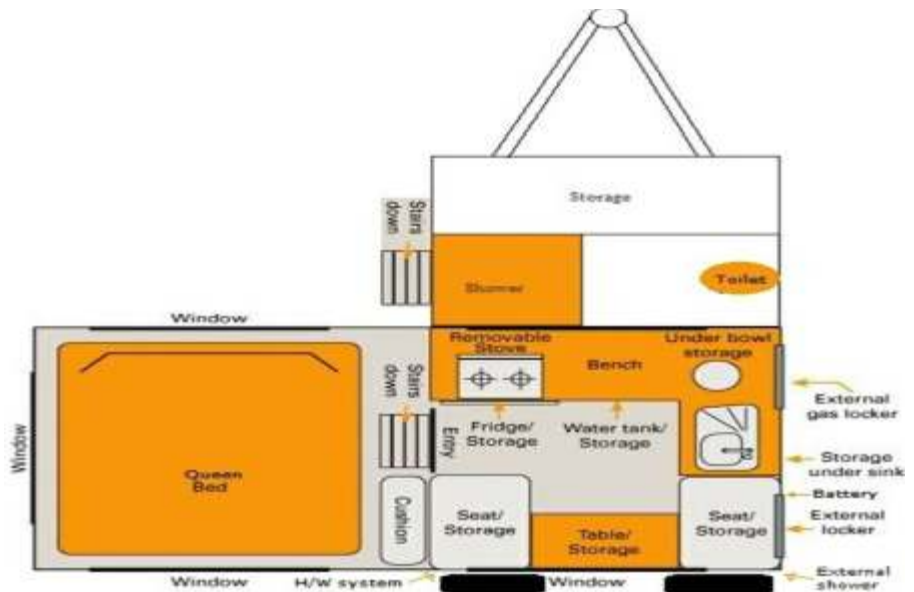
To keep the rig stable there is independent off-road coil suspension with twin shocks and the option to upgrade to independent airbag suspension if you wish. To complete the specification there are 12 inch electric drum brakes,

265/75/16 steel wheel and tyre combination that can be matched to a number of vehicles track, two swing away spare tyres mounted at the rear, two jockey wheels up front and two rear mounted stabiliser legs.

The overall length is 5.5m, width of 1.98m and an overall height of 2.18m. Tray length is 2.2m to accommodate the longest camper unit. The weight unladen is 900kg so it's not a light weight but robustness comes at the expense of weight. The interesting thing to note is that even with the Trayon Slide on Camper unit on the rear there is still a hefty 600kg payload.

Tow ball weight is estimated at 81kg unladen and 170 kg fully loaded. Now that all depends on how you load etc, but you can be confident that these figures are genuine, not under estimated as is often the case from less scrupulous manufacturers.

So what we have here is Aussie made ingenuity working at its best. The Trayon campers are a quality piece of gear and the TMO is built to the same level of construction tolerance. That is obvious with a warranty of 12 months on trailer, 10 years structural on slide-on module (all other components carry individual manufacturer warranties). Going back to my mate from Cape Leveque, that Camper would just now be running out of warranty. Just think what happens over a 10 year period. Pricing obviously depends on what slide on camper you pair with the TMO and what options you chose. So give Vernon and the guys at Trayon a call and get a quote from them. Also stay tuned for a full review in the near future of the Trayon TMO Gen 3.



<b>MODEL</b>	TMO GEN 111
<b>PRICE</b>	FROM \$68,500
<b>SLEEPS</b>	3
<b>TARE</b>	1.3 TONNE
<b>ATM</b>	2.0 TONNE
<b>BALL WEIGHT</b>	81KG
<b>COUPLING</b>	Hyland 2t Off Road
<b>SUSPENSION</b>	Independent Off Road Coil Shock
<b>BRAKES</b>	12 in electric drum
<b>WHEELS/TYRES</b>	265/75/R16
<b>WATER CAPACITY</b>	200L More Optional
<b>WARRANTY</b>	12 mth trailer 10 years on camper

## TRAVEL MATE SLIDE ON CAMPER

by Rob Fraser



There are any number of Ute Canopy manufacturers throughout the country. The trick is finding one that does a good job and has something different about them. Well we found one such manufacturer - Ute Mate, in Mackay QLD of all places. Terry and Wendy Coad were avid campers and designed a slide on canopy that allowed them quick and easy camping but also doubled as a tradie canopy as well.

Like all good manufacturing stories the interest they generated when they were camping has led them to now build a range of canopies for a range of budgets.

The canopy we are interested in here is the Travel Mate, which is made of fibreglass construction that gives strength as well as insulation. There are two internal walls to create three airtight compartments. Unlike a lot of ubiquitous canopies the Travel Mate has quite a pleasing style.



The three internal compartments allow separate bedding, kitchen and storage. The deluxe kitchen has a generous 1.2 metres of Kitchen space with 3 sliding doors and 1 fold down work bench. There are 2 pantry & 1 wash- up areas and a clever design feature is the aluminium lined stove recess area.

Again the thought and design that has gone into the Travel Mate shows in the backboard with tin food storage system. This is a very clever and stylish solution. The fridge (in its separate area) is to the left of the kitchen and very accessible.

Other kitchen features include the side board with Cup Storage system, drawer with 4 person setting of Crockery & Cutlery, drink bottles storage system and folding leg aluminium table

## TRAVEL MATE SLIDE ON CAMPER

by Rob Fraser

The sleeping area is on the other side of the slide on camper and includes a varnished ply Double bed base with a 125mm High density foam mattress.

As the bed base folds down there is an attached aluminium ladder with adjustable legs for easy access. There are four drawers for storage or you could alternatively have two shelves with a door.

Keeping the nasties at bay is a canvas and flyscreen surround. For extra storage there is a high storage shelf that's a very useful 2.3 metres long. The sleeping area also includes a wardrobe, lights and an option to add a fan or air conditioner..

Other features of the Travel Mate Fibreglass Ute Canopies include an electrics kit with a 100 amp deep cycle sealed battery, 12 amp Battery Charger, Engel battery monitor, 5 LED lights, a switchboard, 3 x 12 volt sockets, an external power connection and a safety switch.

The winged door provides instant shade for your comfort. Full electrics and LED lights are included. Both the kitchen and bed area are fully functional without having to take your canoe/tinny of the camper. Ute Mate is all about being quick, easy, comfortable and convenient.

Optional Extras available include trailer canopies 12 volt Fan for bedroom, carpet on walls in bedroom area, campers shower kit with shower tray, purpose built vinyl shower room, 12 volt shower pump and a shower Rose. For those who are heading bush there is the Off Road Camping Trail Set of 4 Heavy Duty Mechanical Legs, trailer campers Rhino Bars, a tent Kit with a 30 Sec OZ tent Model & Standard Side walls and a 900mm high x 2.4 metre vinyl skirt for below kitchen.

Ute Mate is a very friendly Slide on Camper with 3 winged lockable doors including a deluxe kitchen on one side. A double bed set up in five minutes on the other and 2 x 1 x 1 storage in the middle, totally separate from both living areas..

There is full protection from the weather and insects while you sleep, your bed is always made up and you get to sleep in comfort off the ground under insulated fibreglass. The kitchen area is great on the road and while you are set up at camp. A full kitchen of fridge, pantry, fold down work bench and stove is ready for easy and convenient use at any time either a smoko or lunch etc.

There are three models available in the Ute Mate range with prices starting from \$14,300. The beauty is that with upgrade options you can add as much or as little to your package as you want.



<b>MODEL</b>	<b>Travel Mate</b>
<b>PRICE</b>	<b>FROM \$22,900</b>
<b>SLEEPS</b>	<b>2 Adults</b>
<b>TARE</b>	<b>420Kg</b>
<b>AWNING</b>	<b>Wing Doors</b>
<b>DIMENSIONS</b>	<b>2.4m x 2m x 1.1</b>
<b>CONSTRUCTION</b>	<b>Fibregalss</b>
<b>KITCHEN</b>	<b>2.2m with fold down bench</b>
<b>ROOF</b>	<b>Insulated fibreglass</b>
<b>LEGS</b>	<b>4 detachable</b>
<b>WATER CAPACITY</b>	<b>45L</b>
<b>WARRANTY</b>	<b>12 mth on camper</b>



**AUDI Q3 2.0L TDI QUATTRO**

by Rob Fraser



Audi has extended the reach of its ever popular Q3 range with the introduction of a 2.0l TDi model variant. The Audi Q3 2.0 TDi quattro model has enviable economy and is mated to the 7 speed S Tronic dual clutch transmission.

Externally the Q3 retains the Audi 'Q' flavour which means an attractive spacious AWD SUV style. It sits at the premium end of the Small AWD SUV category however with the new entry level product in base format it is surprisingly close to some of the other standard offerings. Currently the Q3 range is the best selling in the Audi lineup and for good reason. Internally the first thing the driver notices is how comfortable the seat is. In front of the driver is the familiar Audi steering wheel that is leather clad and both height and reach adjustable. The dash is a dual dial design with a MFD in between. The steering wheel houses the usual controls but a good design feature is that you can see the stalks without taking your eyes from the road.

The front seat area in general has a spacious feel with the driver feeling especially spoilt. While there are drink holders in the centre console overall there could be a little more storage.



The centre stack houses the dual zone climate air conditioning controls and the audio controls along with a separate slot for the CD's. It is minimalist and stylish, yet functional. Other features include Bluetooth interface with audio streaming, Audi parking system rear, fog lights, light and rain sensors and cruise control. For 2014 the Q3 range has a number of option packages available for style, technik ,sport and comfort etc. These represent reasonable value.

Rear seat passengers have a reasonable amount of knee, leg, head and shoulder room and the seats are better suited to two rather than three. The seat squabs are a little firm but supportive or long periods. The boot area provides enough room for luggage for four for a weekend however the sloping rear roofline (coupe style) does limit the overall amount.

# AUDI Q3 2.0L TDI QUATTRO

\$53,990 RDAP

by Rob Fraser

<b>Model</b>	Q3 2.0 TDI Quattro
<b>Model Price</b>	\$53,990 RDAP
<b>Engine</b>	2.0L 4 Cyl TDI
<b>Drivetrain</b>	AWD 7S S Tronic
<b>Power</b>	103 Kw @ 4,200 rpm
<b>Torque</b>	320 Nm @ 1,750 rpm
<b>Safety</b>	5 Star NCAP
<b>CO2 Emissions</b>	152 g/km
<b>GVR</b>	31/2 Star
<b>Economy</b>	5.8L/100km (ADR comb)
<b>Tow Capacity</b>	Max 1800 kg
<b>Tow Ball Rating</b>	180 kg
<b>Servicing</b>	TBC
<b>Warranty</b>	3 yr/ Unlimited km with full roadside assist



Safety is obviously a feature with Airbags for driver and front passenger, Side airbags at front, Head level curtain airbags, Electronic stabilisation control (ESC) with ABS, ASR and EDL. Electromechanical speed sensitive power steering

The TDI engine is the ubiquitous 103Kw that delivers power of 103 Kw @ 4,200 rpm and torque of 320 Nm @ 1,750 rpm. This drives through a 7 speed S Tronic dual clutch transmission to all wheels through the excellent Audi Quattro system. The alloy wheels take 235/55/R 17 tyres. The combination provides a reasonable balance between power, economy and performance. This combination frugally sips fuel at about 8.0L/100K on our test. That was a mix of city and freeway driving in real world conditions.

On the road the Q3 provided an engaging driving experience. The steering wheel gave just enough feedback and the responsiveness of the low down torque kept things moving comfortably. Handling dynamics for this style of vehicle are amongst the best in class. An AWD SUV such as this will never be an antidote for the boy racer amongst us but there are some that are much better than others and the Q3 sits near the top of the list. On dirt roads, fire trails and sand the Q3 is stable, surefooted and exudes confidence. In short the Quattro system is a bundle of fun on the dirt and this is where the Q3 shines. I know it will spend most of its days in shopping centre car parks but owners should be a little adventurous with their SUV. Not too adventurous though. Where the graded fire trail ends so should the adventure. Take the Q3 much further into the bush and the result won't be pretty with poor approach and departure angles and lower ground clearance. We have previously towed with this engine and the Q3 is suitable for light campers, bikes, jet skis etc. In other words for an active lifestyle.

What Audi has done with the Q3 2.0 TDI quattro model is show that small doesn't mean without luxury, handling dynamics or capability. The Audi Q3 is a surprise for those shopping in this segment. Yes if you tick the long and expensive options list the price skyrockets, however as a base offering it excels and you would question why you would need to add many features to an otherwise outstanding offering. The Audi Q3 2.0 TDI quattro model is definitely worth a look with Quattro AWD, sharp dynamic handling (for an SUV) economical yet powerful diesel engine all wrapped up in pretty slick Coupe styling.



#### What's Good:

- Driver comfort
- Stylish Looks
- Quattro Handling

#### What's Not:

- Long and expensive options list
- Sloping roof reduces cargo capacity
- Sat Nav on top of dash

**Overall OzRoamer Rating: 86/100**

Behind the Wheel	9	Practicality	9
Comfort	10	Fit for Purpose	9
Equipment	10	Towing Ability	7
Performance	9	Off Road Ability	6
Ride & Handling	9	Value for Money	8



**HOLDEN COLORADO LTZ 6 SP MT**

by Rob Fraser



Holden has upgraded the Colorado for 2014 with a vastly improved Duramax 2 Turbo Diesel engine, more power and torque, some other changes and a six speed manual transmission. We test the LTZ 6 Sp Manual in the new vibrant Sizzle Orange which is certainly noticeable on the road. Externally it remains the same as the model it replaces. The new Holden Alloy SuperBar certainly looks the part with its aggressive lines that complement an already great looking front end.

Internally the LTZ is the top of the range with leather seats, thickish steering wheel with a heap of controls on it, sat nav, and an abundance of storage areas. The leather seats are very comfortable and the height adjustable steering wheel provides more feedback than you would expect from a Ute. The driver's seat is electrically adjustable and the lumbar support is excellent.

Internal storage is a feature with door pockets front and back, two decent sized glove boxes, a storage in on top of the dash, bottle holders in front of the air vents (great for keeping things cool in summer), a shelf below the steering wheel, a door sill recess, cup holders in the centre console and a large centre storage bin. Seriously all cars should be like this.



The New Colorado features Holden's new Infotainment MYLINK system units as standard. The MYLINK is an easy to use in car entertainment and navigation unit that is an app based system that works with most smartphones such as iPhone and Android.

It brings a whole new experience to Motoring enjoyment. You can choose from the latest Apps that include Pandora, Stitcher and Tune in Radio these are preloaded into the MYLINK unit. Pairing your Bluetooth phone is a simple step and the call quality was very clear. The Touch screen worked a treat with little if any delay when going through the Apps and the menus. Kudos to the Holden Tech team on a great intuitive system and the speaker setup sounded great throughout the cabin

# HOLDEN COLORADO LTZ 6 SP MT

**\$55,353 RDAP**

by Rob Fraser

<b>Model</b>	Colorado LTZ
<b>Model Price</b>	\$55,353 RDAP
<b>Engine</b>	2.8L Tdi 4Cyl
<b>Drivetrain</b>	4WD 6 speed MT
<b>Power</b>	147 Kw @ 3,600 rpm
<b>Torque</b>	440 Nm @ 1,600 rpm
<b>Safety</b>	5 Star ANCAP
<b>CO2 Emissions</b>	243 g/km
<b>GVR</b>	2 ½ Star
<b>Economy</b>	8.1 L/100km (ADR comb)
<b>Tow Capacity</b>	Max 3500 kg
<b>Tow Ball Rating</b>	350 kg
<b>Servicing</b>	TBC
<b>Warranty</b>	3 yr/ 100,000 km with full roadside assist



Holden has vastly improved the Duramax 2 TD engine. Peak power is now up from 132kw to 147kw @ 3,600 rpm and 440Nm @ 1,600 rpm of torque. The Auto version has been upgraded from 470Nm of torque to 500Nm. The 6 Sp Manual mates beautifully with the 2.8L engine to produce a sweet moving combination both on and off road. The engine just seems more refined and quieter and is economical with a fuel usage rate of just 8.1L/100Km. On the freeway we got that down to a little over 6.6L/100Km and it is possible to get 1,000km out of a tank on the freeway.

It still boasts 3500kg towing capacity and a payload of a tonne now that's impressive and what everyone wants when they tow a camper trailer off road or trailers full of work gear. An improvement for towing is the new chassis control systems such as Trailer Sway Control and Hill Start Assist, as well as a Descent Control System. Trailer Sway control detects any towing instability, activates the brakes and reduces engine torque, ensuring complete peace of mind when pulling a trailer or caravan. The rear camera also makes hitching a breeze. Unlike Utes of the past the Colorado is now rated as 5 Star ANCAP with a host of safety features including: driver and front passenger airbags, front side impact airbags and full length curtain airbags, ESC, complemented by ABS with EBD and HBA.

Off road the Colorado 6 Sp manual performed a treat. Electronic assistance in the form of the hill descent control means the Colorado was able to handle very steep fire trails and tracks with ease. Its almost too easy and any 4WD enthusiast will be happy with the performance. The engineers and test team have refined The Colorado from its predecessor into a true all-round work truck, farm truck, tradie vehicle and family getaway vehicle that will give years of enjoyment.

Holden have come up with some great styling packs to really stand the vehicle out from the crowd with factory fitted accessories that compete with anything the aftermarket boys can come up with. Over all the New Colorado series remains physically the same vehicle as the one its replacing but the engine and transmission's refinement certainly change this to a much more pleasurable vehicle to drive on and off- road. Additionally the towing features makes this one of the top choices.



### What's Good:

- Towing Capability
- Internal Comfort
- Robustness

### What's Not:

- No steering reach adjustment
- No front seat squab tilt adjustment
- No rear diff lock

**Overall OzRoamer Rating: 92/100**

Behind the Wheel	8	Practicality	10
Comfort	8	Fit for Purpose	10
Equipment	9	Towing Ability	10
Performance	9	Off Road Ability	10
Ride & Handling	9	Value for Money	9



**JEEP WRANGLER RUBICON 10TH ANNIVERSARY**

by Rob Fraser



Jeep has been producing the legendary Wrangler for, well let's say, a few years now. However not content with producing a ubiquitous off road vehicle that will leave most following in its tyre tracks, ten years ago they decided to produce a special vehicle with further capabilities called the Rubicon. Named after the famed Rubicon Trail, a demanding trail in the States.

Now ten years down the track with the Rubicon winning a host of international awards and still one of the most capable production 4WD vehicles on the planet, Jeep have decided to mark the anniversary with yet another limited edition with more capability

The Wrangler Rubicon 10th Anniversary Edition is limited to just 30 vehicles for Australia. 12 two door and 18 four door versions, so my advice is to get in now because after driving a four door version for a week its reckon its awesome.



External features that are specific to the 10th Anniversary model include an extra 12.5mm of ride height combined with 245/75/17 Goodyear Wrangler tyres, 17 inch Alloy wheels, finished in satin black with polished faces and a red Jeep Wrangler 'icon' logo on the outside lip, dual bonnet air intakes, Mopar rock rails, black tail lamp guards, body-coloured fender flares, deep-tinted sunscreen rear and quarter glass, 10 Anniversary badges and a full Rubicon bonnet decal.

The Wrangler Rubicon 10th Anniversary Edition comes standard with a three-piece body-colour Freedom hard top, while the soft top is also included in the vehicle.

Exterior paint colours for the Wrangler Rubicon 10th Anniversary Edition are White and an exclusive 10th Anniversary Edition colour called Anvil.

**by Rob Fraser**

Internal features include quite bright red leather seats with 'Rubicon 10th Anniversary' decals, red stitching on the leather steering wheel and centre console. A unique gauge cluster features a '10th Anniversary' signature as well as a premium Electronic Vehicle Information Centre (EVIC) with read-outs such as oil pressure, oil temperature and tyre pressure. There are silver embellishments throughout as well.

Of more practical use is the Mopar slush mats, Uconnect media centre with 6.4-inch touchscreen and GPS navigation, front seat side airbags and a reversing camera which should be mandatory for all vehicles. The 10th Anniversary Rubicon model is powered by the Pentastar 3.6-litre V6 engine producing power output of 209 kW @ 6,350rpm and torque of 347 Nm @ 4,300 rpm. This is mated to either a six-speed manual or optional five-speed automatic transmission. This combination uses fuel at a rate of about 17L/100K around town and 11.5L/100K on the freeway.

The Jeep part-time four-wheel-drive system features front and rear Dana® 44 axles with a 4.10 axle ratio, shift on the fly transfer case, Tru-Lok® electronic remote-locking differentials and a Rock-Trac® transfer case with a 4:1 low range, off road skid plate, while Electronic Front Sway Bar Disconnect permits increased articulation.

With the standard six-speed manual transmission, the Wrangler Rubicon 10th Anniversary Edition has an impressive crawl ratio of 73.1:1 that makes it a breeze to negotiate any obstacle for those insane minded individuals. However the optional automatic transmission is my choice.

The Wrangler Rubicon is all about 4WD adventures. For the four door the approach angle is 35 degrees (or 42.5 with the Mopar front bar fitted,) departure angle is 28 degrees (33.4 with the rear Mopar bar fitted) and ramp over angle of 18 degrees. Ground clearance is 264.2mm, water fording depth is 762mm and it has a towing capacity of only 2300Kg.

Safety features include: advanced multistage driver and front-passenger airbags, supplemental side seat-mounted airbags for front occupants. Electronic Stability Control, four-wheel anti-lock, with on- and off-road calibrations, four-channel, active-wheel-speed, vehicle-speed, steering-wheel-angle, yaw-rate and lateral acceleration sensors, vehicle stability management with three-stage activation switch, All-Speed Traction Control (ASTC), Brake Assist, Electronic Roll Mitigation (ERM) and Electronic Brakeforce Distribution (EBD)ABS with EBD (Electronic Brakeforce Distribution) and VDC (Vehicle Dynamic Control). HDC (Hill Descent Control)

So what is the 10th Anniversary Rubicon really like. Similar to all Wranglers it has certain attributes that only the faithful can love. It has a lack of effective storage spaces other than the centre console and glove box, it has doors that swing freely in the wind and have a habit of swinging back on your shins as you are getting out, a hard top that takes two people to remove it, no reach adjustable steering wheel, Its ride on the road can be a little unsettled,



by Rob Fraser

<b>Model</b>	Wrangler Rubicon 10 <sup>th</sup> Anniversary
<b>Model Price</b>	\$60,779 RDAP
<b>Engine</b>	3.6L V6 ULP
<b>Drivetrain</b>	4WD 5 speed Auto
<b>Power</b>	209 Kw @ 6,350 rpm
<b>Torque</b>	347 Nm @ 4,300 rpm
<b>Safety</b>	4 Star ANCAP
<b>CO2 Emissions</b>	276 g/km
<b>GVR</b>	3 ½ Star
<b>Economy</b>	119L/100km (ADR comb)
<b>Tow Capacity</b>	Max 2300 kg
<b>Tow Ball Rating</b>	230 kg
<b>Servicing</b>	TBC
<b>Warranty</b>	3yr/ 100,000 km with full roadside assist



Especially in strong crosswinds and the four door has a turning circle like the Queen Mary as well as a number of other unique 'characteristics'. However turn off the bitumen and head to the bush and all those idiosyncrasies are quickly forgiven and forgotten.

The 10th Anniversary Wrangler Rubicon is simply awesome off road. For the price there is nothing that compares to its capability. We took a drive through the Watagan's Sate Forest and National Park and along Stockton Beach to test it out. Given that it a limited edition and not our vehicle we were reticent to take it too far into the rough tracks. On fire trails, rutted or rocky tracks the articulation, ground clearance and underbody protection simply eats them without fuss. You can head into the really rough tracks, further than most other standard vehicles , without fear.

On the sand it simply glides over the dunes. One annoying trait is the propensity to override the switch off button for the traction control. As an experienced 4WD driver I turn it off on the sand for a reason and it is annoying when the electronics believes it should turn itself back on. The tyre pressure monitors are a handy feature as we found out when we put air in the tyres after driving on Stockton Beach. The tyre gauge at the garage obviously was a little out because as we drove out the tyre monitor was flashing telling us that the tyres still needed more air.

We have reviewed the normal Wrangler Rubicon previously and it is amongst our favourites, the 10th Anniversary model makes the ride all the better. As there are only 30 examples available, we feel privileged to have been able to test it.

I can't help but wish for the 3.0L CRD engine from the Grand Cherokee as the power plant. Now that would be an unstoppable, and economical 4WD. Everyone has their wish list of their top 5 cars and the 10th Anniversary Wrangler Rubicon just made that list for me!



### What's Good:

- Additional Anniversary Features
- 4WD capability
- Very cool

### What's Not:

- Wrangler idiosyncrasies
- On road handling
- Prefer diesel engine

**Overall OzRoamer Rating: 86/100**

Behind the Wheel	8	Practicality	8
Comfort	8	Fit for Purpose	10
Equipment	9	Towing Ability	7
Performance	8	Off Road Ability	10
Ride & Handling	8	Value for Money	10



**ALL NEW TOYOTA KLUGER LAUNCH**



Toyota has released an all new Kluger. The 2014 seven seat Toyota Kluger is an AWD SUV that has surpassed the previous model in everything including style, technology, comfort, capability and safety at value pricing.

The third generation Kluger is more technologically advanced, has more internal space, more second and rear seat room, more luggage space than its predecessor. The second generation was a sales success, this generation is sure to be a raging success.

Let's face it the last generation Kluger while fitting most of the criteria of the almost perfect soccer mum taxi it was rather bland in styling, no it was plain boring. However the latest Kluger bring style to the offering that was lacking previously.

There are six model variants, with the choice of two drivelines and three equipment grade levels. All six models are seven-seat wagons, with a 3.5-litre quad cam V6 engine and newly adopted six-speed sequential-shift transmission. The driveline choices are 2WD and AWD, and the equipment levels are GX, GXL and Grande. The split between AWD and 2WD sales is about 50/50 proving that buyers want all the practicality and space of the wagons sometimes without the AWD facility.

In developing the new Kluger Toyota spent a lot of time in local development for the suspension and steering dynamics. Frankly it shows as the Kluger displays again a level of driving experiences also lacking previously. The suspension geometry changes really shows up ,especially on the dirt. Corrugations, fire trails and dirt roads are all handled with ease. It's actually a little fun under those conditions.

Toyota Australia's executive director sales and marketing Tony Cramb said development of the new Kluger had focused on expanding its visual appeal, developing an even better package for families, and providing greater driver enjoyment



A totally redesigned interior raises the bar on overall quality with premium materials, soft-touch surfaces, bright accents and greater refinement and functionality. Smart storage solutions include an under-dash tray shaped to prevent items sliding out and a 24.5-litre roll-top centre console that doubles as an armrest and is big enough to store a large handbag. This is a very well designed area as you can have the centre bin open yet still have elbow support.

As you would expect the all new Kluger has a host of standard features. All models have a reversing camera and reverse-parking sensors, daytime running lamps, factory-fitted air

conditioning, Multi-information Display (MID), cruise control; steering-wheel controls for audio, phone and MID; electric power-assisted steering, alloy wheels including full-sized spare, 72-litre fuel tank, front fog lamps, privacy glass, three 12V accessory connectors, auto headlamps on/off, cargo-area tonneau cover, six-speaker display audio with Toyota Link<sup>®</sup>, AUX and USB input<sup>®</sup>, tilt and telescopic steering column adjustment, power-adjustable exterior mirrors, front and rear mudflaps, conversation mirror, power windows (with front-door auto up/down), and seat-belt reminders for first and second-row seats.

The Kluger is powered by a 3.5-litre all-alloy quad cam V6 engine provides a balance of performance and economy. It delivers 201kW of power at 6200rpm and 337Nm of torque at 4700rpm. It mates well with the new six-speed multi-mode transmission, for increased driveability and better fuel economy. The new U660 transmission was designed to complement the vehicle's quad-cam dual VVT-i V6 engine and operate with Kluger's 2WD and AWD drivelines. The combination sips fuel at an ADR combined cycle of 10.2 litres/100km for the 2WD GX and GXL grades, with CO<sub>2</sub> emissions of 237 grams/km.

Safety is a key feature and Toyota Kluger's active safety credentials include new suspension, improved steering and, in Grande, the availability of Lane Departure Alert<sup>^</sup> and Blind Spot Monitor<sup>^</sup>.

The 2014 Kluger also has daytime running lamps, fog lamps, reversing camera and steering-wheel audio controls as standard equipment. Its comprehensive electronic safety features include Anti-skid brakes (ABS) with Electronic Brakeforce Distribution (EBD) and Brake Assist (BA) Traction Control (TRC) Vehicle Stability Control (VSC), Hill-start Assist Control, All-wheel-drive models have Downhill Assist Control.

AWD models include standard Dynamic Torque Control for maximum traction and cornering ability and Downhill Assist Control that automatically controls the brakes to maintain a constant low speed when descending slopes, helping to reduce wheel lock..

The new-generation Kluger has an impressive passive safety package, including seven airbags and, on Grande, Toyota's Pre-Collision Safety System (PCS). The airbags include dual-stage driver airbag, dual-stage and dual-chamber front passenger airbag, driver's knee airbag, front-seat side airbags and full-length side curtain-shield airbags. Top-of-the-range Grande has the added feature of PCS<sup>®</sup>, which includes a millimetre-wavelength radar sensor in the radiator grille.



It uses the vehicle's grille-mounted millimetre-wave radar to detect vehicles or other obstacles. The radar sensor also provides distance measurement for Grande's Active Cruise Control.

When it anticipates the possibility of a collision, it uses a buzzer and light to warn the driver. When the driver brakes, the system will increase the braking effort. If the system determines a collision is unavoidable, it will activate to reduce speed, even if the driver doesn't use the brake pedal.

Toyota PCS is intended to assist drivers, but it is the driver's responsibility to be aware of the vehicle's surroundings. The system cannot prevent all collisions and performance is dependent upon road, weather and vehicle conditions.



As mentioned the all new Kluger is available in three well-equipped grades - GX, GXL and Grande. Each is available in two-wheel (2WD) or all-wheel-drive (AWD) and provides even better value than before with prices starting at \$40,990\* - \$2,200 less than the previous-model equivalent. AWD is an optional \$4,000 extra across the range, down \$500.

Compared with the current seven-seat price leader, the price has come down \$2,200 to \$40,990\* despite the all-new generation and the inclusion of at least \$2,000 of additional features.

Mid-grade GXL grade adds three-zone climate-control air-conditioning, keyless smart entry and start, 10-way power adjustable driver's seat, roof rails, leather-accented interior and premium steering wheel and shift knob. With at least \$1,000 of extra features, the GXL price of \$49,990\* is \$1,500 lower than the equivalent outgoing variant.

At the top of the range, the Grande is the Kluger with the lot, including safety technologies that help avoid a collision or mitigate the impact if a collision is unavoidable - Toyota's Pre-collision Safety System and Active Cruise Control, which utilise a grille-mounted radar. It also gains Lane Departure Alert and Blind Spot Monitor\*.

It picks up 19-inch wheels, projector LED headlamps with Auto High Beam, tilt-and-slide moonroof, ventilated front seats, eight-inch display audio with navigation and DAB+ digital radio\*\*, second-row sunshades, nine-inch rear-seat entertainment system with Blu-ray player, power-operated tailgate, woodgrain-look pattern highlights and a full-colour 4.2-inch multi-information display. Grande is better value with more than \$7,000 of specification at \$63,990\*. Toyota Service Advantage remains at \$170 for each of the first six scheduled services^.

Overall the all new Toyota Kluger is a significant improvement on the model it replaces, which is no easy feat as the previous model was not only a sales success but a two time winner of the OzRoamer Seven Seat AWD SUV over \$60,000 Award.

\*Manufacturers List Price



**What's Good:**

- Internal Space
- Stylish Looks
- Handling 'Australian Tuned'

**What's Not:**

- No diesel option
- Not much else in reality
- Did I mention NO DIESEL

**Overall OzRoamer Rating: 88/100**

Behind the Wheel	9	Practicality	10
Comfort	9	Fit for Purpose	10
Equipment	10	Towing Ability	7
Performance	9	Off Road Ability	6
Ride & Handling	9	Value for Money	9



**ISUZU MU-X LST**

by Anthony Hood



Launched in late 2013 Isuzu has joined the party with its 7 seat version of the successful and popular D Max. Oddly named the Isuzu MU-X. I really don't know where they get the name from but the MU-X is built on the same platform as the D Max Ute with suspension improvements and a heap of other design features to produce quite a pleasing 7 seat family 4WD.

The Isuzu MU-X is well proportioned, follows the D Max styling and looks smaller than it actually is. Don't however let its good looks fool you it's a true 4WD. Roof rails, side steps, alloy wheels, shark fin GPS antenna, electronic fold in mirrors and fog lights all complement the stylish exterior.

Internally the immediate impression is quality. The black leather seats, door inserts etc all produce a feeling that exudes value for money. The electrically adjustable driver's seat is comfortable and its firmness is appreciated after many kilometres in the seat. The passenger seat is manually adjusted.



In front of the driver is the smallish thick leather steering wheel that houses the usual controls. The dash has two lag dials with a MFD between them. The control for this is on the end of the indicator stalk and its spot on for ease of use. Like all these ute based vehicles the wheel is only height adjustable. As a taller driver I would have appreciated a slightly longer seat travel, but at no time was I uncomfortable.

The centre stack houses a premium audio system with 6 speakers. iPod® and Bluetooth® phone connectivity is standard, while the rear passengers are entertained with Isuzu's "Sky Sound" roof-mounted sound system and 10" DVD monitor. Along with Bluetooth® audio streaming, the LS-T also features a touch-screen satellite

by Anthony Hood

navigation system with live traffic updates and over 10,000 off-road destinations.

Internal storage is a feature. All car designers should sit in the MU-X and see just how simple it is to provide an abundance of storage areas. There are door pockets front and back (with bottle holders but small otherwise), two decent sized glove boxes, a storage bin on top of the dash, bottle holders in front of the air vents (great for keeping things cool in summer), a shelf below the steering wheel, a sunglass holder above your head, a door sill recess, cup holders in the centre console and a large centre storage bin. There are 14 cup holders in total. Seriously, all cars should be like this.

The middle row seats are comfortable more for two than three with a fold down arm rest with cup holders. They are a little flat but comfortable enough for long distances. For all but the tallest passenger there is adequate head, shoulder, knee and foot room in the middle row. The third row is easily accessed and with deep foot wells is up there amongst the best of third row seats, better than the Landcruiser.

With the rear seats in use there isn't a lot of space behind however like most of these type of vehicles it is usually a short drive with all seats in use. Both rear rows of seats benefit from air-conditioning in the roof above them. Importantly all outer seats have grab handles for the rough drives ahead.

Driving the MU-X is the long lasting Isuzu 3.0L diesel. This engine is one tough motor and is renowned for its build tolerances and longevity. The term indestructible comes to mind. The engine produces 130Kw of power @ 3,600rpm and a lazy 380Nm of torque at 1,800rpm. These figures don't always tell the full story though The transmission is a five speed sequential sports shift auto with an adaptive feature that styles itself on your driving. The engine is refined and quieter than you expect and is economical with a fuel usage rate of just 8.4L/100Km. On the freeway we got that down to a little over 7.5L/100Km.

The MU-X is equipped with Isuzu's super-easy to use "Terrain command" 4WD select dial and auto versions are fitted with hill-ascent and descent control. The Terrain Command system is shift on the fly style and while simple works brilliantly.

Car-like ride and handling both on and off road is provided by a new suspension geometry custom designed for the MU-X. Front independent double wishbone suspension with coil springs, gas shocks and stabiliser bar allows the driver positive feedback and steering control regardless of the terrain underfoot, and a rear five-link suspension configuration also with coil springs, stabiliser bar and gas shocks provide superior stability when traversing off road or towing.

The Isuzu MU-X LST has a 5 Star ANCAP with a host of safety features including: a high-tensile steel passenger safety cell with side-intrusion bars, comprehensive crash avoidance electronics including 4-channel 4-sensor ABS with EBD and EBA as well as ESC and TCS, six airbags (dual front, curtain and side), reverse camera and rear park assist sensors.



by Anthony Hood

<b>Model</b>	Isuzu MU-X LST
<b>Model Price</b>	\$58,784 RDAP
<b>Engine</b>	3.0L Tdi 4 Cyl
<b>Drivetrain</b>	4WD 5 speed Auto
<b>Power</b>	130 Kw @ 3,600 rpm
<b>Torque</b>	380 Nm @ 1,800 rpm
<b>Safety</b>	5 Star ANCAP
<b>CO2 Emissions</b>	223 g/km
<b>GVR</b>	2 ½ Star
<b>Economy</b>	8.4 L/100km (ADR comb)
<b>Tow Capacity</b>	Max 3000 kg
<b>Tow Ball Rating</b>	300 kg
<b>Servicing</b>	TBC
<b>Warranty</b>	5yr/ 130,000 km with full roadside assist



Off road the MU-X auto performed effortlessly. The MU-X is fitted with rugged off-road protection in the form of a front steel plate skid/splash shield as well as steel plate guards to protect the sump and transfer case. Clever engineering ensures there are no low-slung components – the front lower control arms don't hang too low, and the air intake is hidden within the front fender. In the engine bay, the ECU isn't exposed, and the alternator sits up nice and high.

There is substantial 230mm ground-clearance, 30.1° approach and 25.1° departure angles. Isuzu have come up with some great styling packs to really stand the vehicle out from the crowd with factory fitted accessories that compete with anything the aftermarket boys can come up with.

We took the Isuzu MU-X LSTY on a family holiday towing a 2800kg caravan through the narrow windy and hilly back roads of Tasmania. The MU-X never missed a beat. While towing we averaged about 14-15L/100Km and there was plenty of power and low down torque for the job. That is what I mean by sometimes the figures don't translate to real world driving. The MU-X performed like it had another 100Nm of torque.

Over all the new Isuzu MU-X is a strong contender in the family 4WD market. It has almost car/wagon like handling, enough power for almost everything you will ask of it, plenty of creature comforts, 5 star ANCAP safety, will seat 7 in relative comfort, is a robust and competent 4WD and all for less than \$60,000. That's pretty good.

What the Isuzu does though is make you really question why you would pay upwards of \$80,000 on some of the other 'family 4WD wagons' it's that good. I think it is interesting that you can get an Isuzu MU-X LSU and a decent camper trailer for less than a new top spec Prado and be out there enjoying the Australian bush and not missing a thing.



### What's Good:

- Towing Capability
- Driveability
- Robustness

### What's Not:

- No steering reach adjustment
- No front seat squab tilt
- No rear diff lock

**Overall OzRoamer Rating: 91/100**

Behind the Wheel	8	Practicality	10
Comfort	8	Fit for Purpose	10
Equipment	9	Towing Ability	9
Performance	9	Off Road Ability	10
Ride & Handling	9	Value for Money	9



**RECOGNISE**



**REACT**

TEACHER

**REPORT**



MUM or DAD

GRANDPARENTS

FRIEND'S PARENTS

AUNTIE or UNCLE

POLICE  
000



[DanielMorcombe.com.au](http://DanielMorcombe.com.au)

Proudly supported by



**ISUZU**  
**UTE**

Spirit of Truck



**JEEP GRAND CHEROKEE OVERLAND V6**

by Anthony Hood



The Jeep Grand Cherokee Overland has been replaced as the top model in the range by the Summit however it remains feature packed with the smooth V6 diesel, new 8 speed auto transmission and retains the legendary off road capability all packaged in a stylish body.

The revamp of the model in late 2013 brings a changed front grill, still seven slot but now squatter, and some Overland specific body-colour design cues including the lower fascia trim on the front and rear of the vehicle

The first thing you notice when you sit inside is the contrasting stitched-leather instrument panel and seats. The leather seats are exceptionally comfortable with 8 way electrically adjustable front seats that also have 4 way adjustable lumbar support.

The three spoke, thick rimmed, heated, leather wrapped steering wheel has a top wooden rim and is electronically height and reach adjustable. Your driving position is also locked into memory for convenience.



Being 6'5" tall I found that while comfortable in the drivers seat I would have appreciated a bit more slide adjustment, especially as the foot brake gets in the way especially as the left foot has limited space.

All seats are heated, just the thing for cold winter mornings. The front seats are ventilated for those hot summer days as well.

The dash has two large dials and a new 7-inch user-configurable multi-view display, with colour TFT liquid crystal technology. The easy-to-use instrument cluster displays the basic information a driver needs

by Rob Fraser

The cluster can be configured 100 different ways. Navigation, speed, audio and fuel economy info, as well as useful information provided by on-board Jeep systems, such as Selec-Terrain modes, can all be displayed in the 7-inch screen.

The centre stack houses a new Uconnect Infotainment System and Sat Nav system with a 8.4" touchscreen. The Uconnect 8.4 system is designed to facilitate a fully integrated infotainment including GPS, voice recognition functionality and additional entertainment features all built into a single hardware platform.

Rear passengers are well catered for with adequate head, shoulder and knee room unless there is a tall driver. There is plenty of boot space and with the 60/40 rear seats folded flat there is an enormous area available.

Above your head is the CommandView dual-pane panoramic sunroof, which is comprised of two glass panels. The full-power front panel opens rearward, while the rear panel, which is fixed, allows light and open viewing for second-row passengers. The system comes complete with a full length power sun shade.

The heart of the Jeep Grand Cherokee Overland is the combination diesel engine and Quadra-Drive II, 4wd system. The new 3.0-litre V6 turbo diesel engine produces 184 kW at 4,000 rpm with 570 Nm of torque at 2,000 rpm. This power is delivered through a 8 speed ZF automatic. This combination is one of the best in its class.

The Quadra-Drive II four-wheel drive system features a rear Electronic Limited-slip Differential (ELSD), Quadra-Drive II delivers prodigious tractive capability and off-road performance. The core of the system is the central transfer case and an electronically controlled clutch pack for active torque distribution.

On dry pavement and in normal tractive conditions, the central transfer case splits 48 per cent of the available torque to the front axle and 52 per cent to the rear axle. In case of slippery surfaces, the system automatically redirects engine torque between the front and rear axles based upon real-time driving conditions.

The system also uses electronic controls that multiply traction on the four wheels and help avoid losses of grip in case of sudden acceleration. The system includes 4WD High and 4WD Low ranges, with 4WD Low offering a 2.72 gear reduction ratio for extreme off-road conditions.

Via the rear Electronic Limited-Slip Differential (ELSD), Quadra-Drive II instantly detects rear tyre slip and smoothly distributes torque across the axle. In some cases, the vehicle will anticipate low traction and adjust in order to proactively limit or eliminate slip.

The all-new Selec-Terrain traction control system lets customers choose the setting for the optimum experience on all types of terrain. This feature electronically coordinates up to 12 different powertrain, braking and suspension systems, including throttle control, transmission shift, transfer case, ASTC and ESC. Easily up there with the best systems available anywhere.



# JEEP GRAND CHEROKEE OVERLAND V6

**\$78,509 RDAP**

by Anthony Hood

<b>Model</b>	Grand Cherokee Overland
<b>Model Price</b>	\$78,509 RDAP
<b>Engine</b>	3.0L CRD V6
<b>Drivetrain</b>	4WD 8 speed Auto
<b>Power</b>	184 Kw @ 4,000 rpm
<b>Torque</b>	570 Nm @ 2,000 rpm
<b>Safety</b>	4 Star ANCAP
<b>CO2 Emissions</b>	198 g/km
<b>GVR</b>	3 ½ Star
<b>Economy</b>	7.5 L/100km (ADR comb)
<b>Tow Capacity</b>	Max 3500 kg
<b>Tow Ball Rating</b>	350 kg
<b>Servicing</b>	TBC
<b>Warranty</b>	3yr/ 100,000 km with full roadside assist



The Grand Cherokee Overland comes standard with the Quadra - Lift Air Suspension system. This is awesome both on and off road and is a essential item for towing. The Quadra - Lift Air Suspension operates automatically to institute certain ride height conditions, but can also be adjusted manually by the driver using the console controls. The Quadra-Lift system provides five height settings for optimum ride performance.

Quadra-Lift air suspension adds up to 106 mm of lift supported by four-corner air springs. With the front air dam removed and Quadra-Lift air suspension fitted, the Overlander features a 35.8-degree approach angle, a 29.6-degree departure angle and a 23.5-degree rampover angle. No wonder its great off road. The new Grand Cherokee uses an array of sophisticated systems, including Quadra-Lift air suspension, Selec-Terrain traction control and new Selec-Speed Control to achieve on and off road dynamics that have to be driven to be appreciated.

Standard safety features include ESC, Electronic Roll Mitigation (ERM), ABS with off road calibration, ASTC, Brake Traction Control System (BTCS) , Trailer-sway Control (TSC) and front-seat passenger seat-belt pretensioners.

The Grand Cherokee Laredo now offers upgraded Forward Collision Warning with Crash Mitigation, Adaptive Cruise Control, ParkView rear back up camera with dynamic grid, ParkSense park assist system and new Selec-Speed Control with Hill Ascent Control and Hill Descent Control, assisting the driver when climbing and descending steep grades

Other standard safety features include seven airbags ; advanced multi-stage driver and front passenger, front seat side airbags, side curtain airbags for front and rear occupants, driver knee airbag and active head restraints that deploy in the event of a rear collision.

Towing with the powerful, torquey V6 Diesel is a breeze with 3500Kg capacity and 350Kg tow ball rating. The standard Quadra-Lift suspension only makes towing heavy items easier. In short it's great for towing just about anything. .

All up the Jeep Grand Cherokee Overland V6 Diesel is a superb 4WD that is stylish, great value for money and awesome off road as well as comfortable on city streets.



### **What's Good:**

- Drivers comfort
- Sophisticated Selec-Terrain
- Standard features

### **What's Not:**

- Left leg room for driver
- Foot brake
- Drivers seat travel

**Overall OzRoamer Rating: 91/100**

Behind the Wheel	9	Practicality	9
Comfort	9	Fit for Purpose	9
Equipment	9	Towing Ability	10
Performance	8	Off Road Ability	10
Ride & Handling	9	Value for Money	9



# 4WD & AWD SUV

## 2013 AWARDS



**OVER 50 VEHICLES IN  
11 CATEGORIES FOR 2013  
OZROAMER AWARDS**

**OZROAMER 2013  
AWARDS SPECIAL  
EDITION E-MAGAZINE**

**OZROAMER BUSINESS  
DIRECTORY**

**WE RATE OVER 150 4WD &  
AWD SUV'S FOR TOWING  
AND OFF ROAD ABILITY**

**OZROAMER 2013 AWARDS**

**PRICE \$4.95**

# PROJECT PAJERO LIGHTING



As we have mentioned previously the standard headlights on Project Pajero leave a LOT to be desired. In short they were pathetic, especially as I am getting older and the inevitable eyesight decline starts. Lighting is a complicated and can be an expensive thing to improve. There are any number of choices on the market for globe upgrades, driving lights etc.

The first thing and most obvious thing was to wash the polycarbonate covers. It's not until you take them off you realise just how dirty they were. Years of dirt and grime was washed away and there was an immediate improvement but nowhere good enough. Next we decided on some high performance globes. We stayed away from the HID inserts as they were expensive and we probably would have needed a wiring upgrade. The high performance globes made an immediate and very noticeable difference. The first being that the light was white not yellow and was much clearer.

If we were just driving around the city where there are street lights then this probably would have been enough. The globes brought the lights up to modern day standards and were very inexpensive as well. less than \$100. However as we are building an outback tourer we needed more. Much more in fact.

Here is where it gets tricky. The choice and price differential in driving lights is huge. There are the well known brands, expensive but good. Also you have to decide on what type of lights you need to match driving styles.



Do you want a spread beam, a pencil beam, a combination of both? So we looked around at driving lights. Wanting to do something a little different we decided on some LED 'Bricks' from KORR Lighting. We already use their camping kit for strip lighting around the camp ground and they are excellent quality and robust while lighting up the night sky.

The driving lights we chose are a pair of 90W LED lights. These are a square design and rated to IP68 which means basically they are waterproof and almost indestructible. They came with their own wiring harness and DIY kit which was straight forward and easy. A couple of hours and we were ready to turn night into day.

While we don't propose to do a step by step DIY article on installing the driving lights, suffice to say it was relatively easy and any clear thinking home mechanic can do it, even me and I am certainly no mechanical genius. It was simply a case of bolting the driving lights to the holes in the factory bumper bar, connect the wiring harness to the battery and sliding the plug through to the lights. We had to take off the plug as it wouldn't fit but that was an easy process. Then the light switch was put through to the cabin. The only thing that was a little tricky was getting the switch to stick to the dash. This kit was really the definition of plug and play for DIY lighting.



The difference driving home that night was enormous. They provide a white light, very broad in their spread and about 500-600m in front of the car. We have used these lights on a number of occasions now and they continue to impress me with their robustness and versatility.

In short they are AWESOME!. They really do turn night into day and while they are limited to about 500m or so that is enough for the style of driving we are currently doing.

We are investigating the need for a directional HID driving light as well and if we do we will be going back to the guys at KORR lighting as they make great products at absolutely reasonable prices.

## INNOVAN SLIDE ON CAMPER

by Rob Fraser



The slide on camper market has a broad spectrum of styles and designs from the simple to the elaborate. The Innovan slide on camper tends towards the elaborate with its almost space pod design. Made from one piece moulded GRP Composite Roof, Base & Furniture the Innovan slide on camper is both form and function rolled into one design.

The Innovan is certainly a different looking and functioning slide on camper and while it is fairly heavy at around 700kg (you may need some suspension work done) you get a lot of innovation built in that translates to ease of use. So easy and convenient is the Innovan system, that it takes only seconds and one single movement to change from an attractive, streamlined compartment, with a height only 1.5 metres above the floor to an enclosed living space with solid walls and a ceiling close to 3 metres high.

The roof is supported by gas struts set at a pressure, which enables the roof to be raised or lowered effortlessly, and to remain in the position it is placed. The stairs and awning can be deployed or packed away in a matter of seconds. Because of the external access to storage compartments, chairs and other items that make up a campsite, can also be obtained or stored away in only seconds.



The quality of construction is obvious where stainless steel is used rather than coated or painted steel to avoid rust. The one piece moulded construction of the major components, does away with the need for sheets of material to be attached to some sort of framework with staples, pop- rivets, screws or glues etc, all of which have the potential to fail under extreme conditions. The gelcoat surface is tough and even after years of exposure can be easily buffed back to its original brilliant finish. One benefit of the moulded GRP composite construction is that its insulating qualities make for a comfortable interior temperature in winter or summer. Unlike Canvas and aluminium there is inbuilt insulation as well as protection with solid walls and roof.

# INNOVAN SLIDE ON CAMPER

by Rob Fraser

The Innovan Slide-on is easily attached to the tray or the chassis of most cab/chassis vehicles. Using adjustable winding Jacks or non adjustable Stands (legs) which can be inserted into the stainless steel Jack Mounts, the slide-on unit can be quickly and easily detached from the vehicle and used as a free standing unit leaving the vehicle available for use as a normal tray back.

Once set up there is a large awning at the rear covering the steps and the slide out external kitchen. The windows are high to allow the heat to escape but don't allow much of a view. Entry is restricted though through a half height door. There is plenty of externally accessed storage sections and a rear shower.

Internally the moulded design again shows its benefits. Marine hull liner is used as a lining for the interior of the canopy increasing the insulation properties. At the rear are two single full-length beds that hinge up effortlessly out of the way when not in use or hinge down for easy access when required. These beds can stay made up at all times and if required can be easily converted to a queen bed. These beds when lifted reveal the moulded seats for the dining table and storage areas under the bed. There are more storage areas under the seats and beside them. In fact there are little storage pods everywhere.

Two people sitting at the table have access to items on the cook-top, in the fridge/freezer and in the front storage compartments. The front storage compartments can contain crockery and cutlery, condiments and food items thus enabling a light meal to be prepared and eaten without having to move from the seats. The opportunity to cook inside the camper is provided for with either a two burner cook-top with glass lid or a three burner cook-top with glass lid. The glass lid protects a person from the heat should they be sitting beside the cook-top when it is being used.

Interior lights are attractive, modern, efficient, 12 volt lights with individual switches. As many as 12 adjustable down lights are fitted depending on the model. 240 volt power points are double pole and connected through a safety circuit breaker. They are conveniently located at various places depending on the model.

There are four models in the line up and the designers Welby Davidson and his son Neil have tried to keep the prices down by having packages that buyers can choose from. The four models are Crusader, Adventurer, Rover and, Voyager, each with more features for buyers. The choices between each model are clear and each package has a comprehensive list of inclusions.

Overall the Innovan slide on camper is for those who want something different, where both form and function blend together in clever design. It provides an avenue for individuality in a sometime bland industry. We should celebrate the innovation of the Innovan slide on camper.



<b>MODEL</b>	Innovan slide on camper
<b>PRICE</b>	FROM \$30,990
<b>SLEEPS</b>	2 Adults
<b>TARE</b>	700Kg
<b>AWNING</b>	YES in 3 seconds
<b>DIMENSIONS</b>	2.7m x 2.15m x 1.5
<b>CONSTRUCTION</b>	Comp Fibregalss
<b>KITCHEN</b>	Internal & external
<b>ROOF</b>	Hinged with gas struts
<b>LEGS</b>	4 detachable
<b>WATER CAPACITY</b>	From 55L - 220L
<b>WARRANTY</b>	Up to 5 Years

# TRAVELANDER GEO 2 CONVERT CAMPER TRAILER

by Anthony Hood



Known probably more for their slide on campers Travelander have a range of camper trailers that follow the same style and design as their slide ons. The fully imported premium offering in the fibreglass camper trailers is the GEO Convert 2. This is a left hand side fold hard floor camper trailer with a host of extra features as standard.

The Geo Convert 2 comes with the very handy automatic set-up aided by a remote control key ring. It is extremely easy to set-up, as there is no back breaking exercise of opening and closing the camper. Entry to the Travelander camper trailer is from the left hand rear, via the canvas door. The kitchen is located at the rear of the camper trailer, which when open is sheltered from the sun, as the kitchen door when opened sits hinged on gas struts above your head. There are 6 cupboards for storage in the kitchen

The Travelander GEO Convert 2 chassis is constructed with 100 x 50mm beams, manufactured with lugs, scrub bars and other anchor points, before being hot dip galvanised for longevity of life. This chassis rides on independent trailing arm suspension with coils and shock absorbers, LandCruiser wheels and tyres and 10" electric brakes.



There is an optional independent air bag system along with the shock absorbers; where each air bag manually adjusts to level the floor when setting up camp.

The rear of the chassis design, allows a bike carrier to be fitted, for those who enjoy a bike ride through the country towns that you visit.

The size of the trailer is Length 4600mm x Width 2000mm x Height 1950mm, so it is fairly substantial. The design with a large nose cone allows a huge storage area for generators, jerry can outboard motor etc. There is also storage drawers internally under the bed for clothes etc.

# TRAVELANDER GEO 2 CONVERT CAMPER TRAILER

by Anthony Hood

Power for the trailer comes from a 12 volt electrical system that runs throughout the main structure, with the allocation of two x 240 volt power plug outlets if running off the 240 volt power inlet.

Solar panels can be fitted by a solar panel supplier, to the top of the van to back up the mains supply if you are planning a long trip, however there is a battery charger and inverter which are located inside the camper trailer, along with two 120 amp hour batteries, charged by Anderson plug while driving.

The queen size bed sleeping area is huge and airy with a number of well placed windows. Helping to keep the sun and water out is the tropical roof.

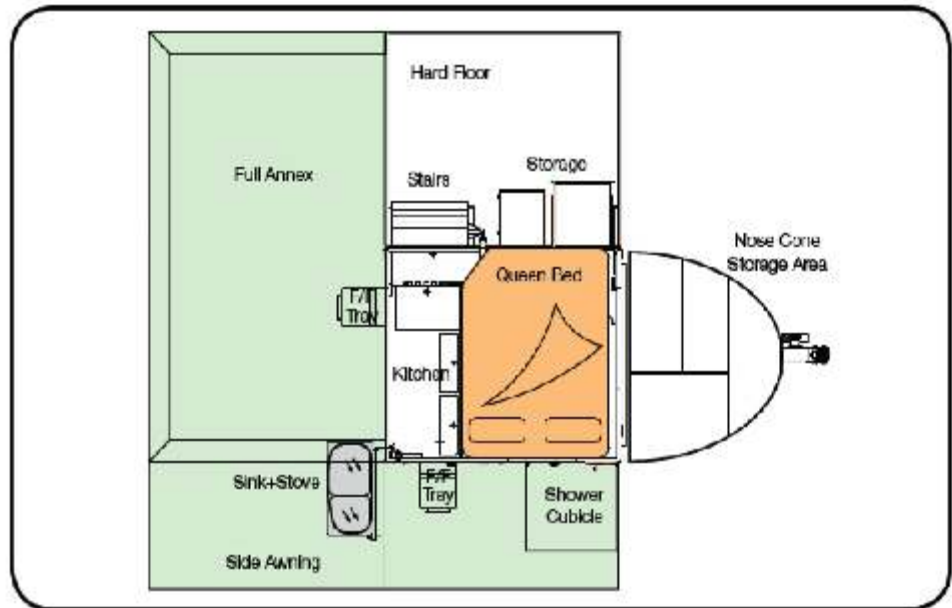
Canvas used for the tent, annexe roof and walls is made from a premier outdoor fabric which has been Dynaproofed™ to prevent sun penetration. The advantage of the hard floor is not only somewhere to stand and get changed etc but in inclement weather or for overnight stays there is a sizeable area to sit inside. There is also a kitchen shade for quick stops and a main annexe roof which is 8 foot wide and runs the length of the camper when folded out.

Additionally there is also another roof shade which is stitched into the main roof on the drivers' side of the camper trailer, which protects you from the harsh elements of the sun and rain. The roof shade sits over the top of the shower cubical, external storage and 2nd fridge compartment, which allows you access without tempting the elements.

For those that need it the most popular addition to the camper trailer would be a portable toilet, which can be placed in the shower cubical for privacy and use. When travelling, you can store a portable toilet in the storage compartments of the front nose cone.

There is a relatively long list of options for you to choose from, however most of these would be personal choice items that you may or may not buy from Travelander.

The camper trailer is very roomy and airy inside with large windows and plenty of bed area. There is heaps of storage under and beside the bed as well as external storage cubicles and the overall design is stylish and compact when closed. If you are looking at an off road camper trailer that is easy to put up and down and represents reasonable value, then the Travelander GEO Convert 2, chock full of features, should be on your list.



<b>MODEL</b>	GEO Convert 2
<b>PRICE</b>	FROM \$48,900
<b>SLEEPS</b>	4 - 6
<b>TARE</b>	1.14 TONNE
<b>ATM</b>	TBA
<b>BALL WEIGHT</b>	TBA
<b>COUPLING</b>	DO 35 AT
<b>SUSPENSION</b>	Independent Coil
<b>BRAKES</b>	12 in electric drum
<b>WHEELS/TYRES</b>	Landcruiser
<b>WATER CAPACITY</b>	120L
<b>WARRANTY</b>	2 years Trailer 1 year electrical



## Fiat Ducato: The Leading Choice for Dream Motorhomes

The Fiat Ducato has become the most preferred vehicle base on which the next generation of Australian luxury motorhomes are built. More than a third of Australian-made motorhomes are now crafted on the purpose built Fiat Ducato base, which is attributable to Fiat being the only European brand that designs and builds a vehicle specifically for motorhome construction. The latest Fiat Ducato-based Australian-built motorhome is a luxurious six berth slide-out from Tasmanian company Cruisin' Motorhomes.

The growth in baby-boomer retirement and the Australian dream of exploring our continent is driving strong growth in local motorhome manufacturing. The new cohort of motorhome owners and renters demand the best in comfort, safety and technology in both driving and accommodation experience. The result is a high value Australian motorhome manufacturing industry that is delivering motorhomes brimming with designer interiors and a host of innovative features. Cruisin' Motorhomes' latest six berth slide-out boasts all the luxuries of a modern home and provides extra space at the push of a button.

Cruisin' Motorhomes has used the foundation vehicle to launch a larger motorhome that can still be driven on a normal licence and offers superior space and amenities. The innovative motorhome has already become the most popular hire vehicle on the Cruisin' fleet. "This new addition to our fleet gives customers the extra space they want on their motorhome holiday," said Grant Lucas, Cruisin's Head of Production and part-owner of the family business.

Cruisin' Motorhomes' six berth slide-out includes unique slide-out room to bolster interior space, while a separate shower and toilet area and ample storage space add to the sleek comforts of the spacious vehicle. "Every step of the production of the Fiat Ducato motorhome has been undertaken with our customers in mind," Mr Lucas added. "We want to provide them with a hassle-free and comfortable experience."

The Fiat Ducato features a capable chassis that can handle high payloads and significant towing capacity in addition to a powerful 3.0-litre turbo diesel engine that delivers performance, reliability and usability. The latest Ducato also includes Fiat's advanced Traction Plus System to deliver exceptional stability and traction in slippery and rough terrain. Driver and passenger airbags and the latest ABS braking technology headline the Ducato's safety systems. The ergonomically designed cabin features supportive seats with maximum adjustability, visibility and a suite of communication systems and driver aids. Bluetooth phone connectivity with voice control, a fully integrated mount for TomTom navigation and a host of thoughtful interior features ensure that the focus is as much on the enjoyment of the journey as it is on the destination.

Fiat Ducato RVs are equipped with specially designed all-rounder tyres that maximise traction and reduce flat spotting when the vehicle is static for long periods. Suspension is modified to provide a plush ride, while Ducato's short front overhang also allows for easier access to trickier sites. The Fiat Ducato-based six berth slide-out from Cruisin' Motorhomes is confirmation that Australian high value vehicle manufacturing is capable of leading the world, and a shot in the arm for the Australian specialist manufacturing sector.



## All-new Renault Traffic Breaks Cover

Renault has taken the wraps off the all-new mid-size Traffic van, one of its most popular models, which has clocked up more than 1.6 million sales since 1980. The all-new van goes on sale in European markets mid-year. This practical and economical 'Van à Vivre' will sport a new look both inside and out, and will be loaded with clever and smart innovations that will benefit business customers in many ways. A range of new, responsive and economical engines is, of course, part of the recipe for success.

The Traffic will be available with new Renault-developed 1.6 dCi powerplants, including a twin-turbocharged version that boasts fuel consumption of less than 6.0-litres per 100km. The new Traffic is now built at the Sandouville factory in France, meaning all of Renault's European market-leading LCV range of Kangoo, Traffic and Master, are now made there. Launched in 1980 to replace the equally illustrious Estafette (not sold in Australia), the Renault Traffic has already achieved more than 1.6 million sales around the world, and the new generation vehicle will be sold in 50 countries.

The new Renault Traffic comes with a completely new exterior design. The front incorporates the bigger, more upright logo that is representative of Renault's new brand identity. Its stance is forceful and dynamic, while its wide, slender headlights give it an expressive look, and the more sloping windscreen results in a clear division with the bonnet. A wide and assertive air intake and a body-coloured trim strip between the two grilles produce a lighter feel. Sharper lines make the vehicle's silhouette more dynamic than before.

The new Renault Traffic can be customised as required thanks to the outstanding diversity of its range, which in Europe will feature 270 variants. There will be 2 roof heights, 2 different lengths across delivery van, crew-cab, platform cab and minibus body styles, not to mention the bespoke solutions produced by approved converters and Renault Tech. The new Renault Traffic is both flexible and economical thanks to the latest-generation, Renault-developed 1.6 dCi unit (R9M). This engine range is available in two versions: with a single variable geometry turbo, which yields a gain of more than 1.0-litre/100km compared with the previous 2.0-litre unit, and the Twin-Turbo version, the fuel consumption of which dips beneath the 6.0-litres/100km\* threshold. These engines offer brisk pick-up and improved low-end torque for responsive acceleration, even when the vehicle is fully loaded. The new Renault Traffic was developed by Renault's expert LCV engineers to be reliable and robust. It benefits from the knowledge and expertise of 1,800 men and women at the Sandouville factory, which previously was home to the assembly of Renault's high-end passenger cars.

To relocate Traffic production to France, the factory underwent significant transformation work thanks to an investment of more than €230 million (AUS\$ 352m). Renault is Europe's number one LCV maker, a title it has held without interruption since 1998. The three factories in France that assemble the Renault LCV range are MCA (Maubeuge) for Kangoo, SOVAB (Batilly) for Master, and now Sandouville for Traffic. The all-new Renault Traffic will go on sale in Australia in 2015. Supplies of the current generation Traffic continue to be freely available, competitively priced from \$32,990 drive-away.

\* Homologated consumption and CO<sub>2</sub> emissions, according to (country) regulation.

## BRIX ENGINEERING RENOVATE AN OLDER CARAVAN FOR DESERT TRAVEL



Lets paint a typical scenario. You are a family of four or five, younger kids and 'normal' ie not retired with a huge super payout. Yet you want to explore the Australian Outback. Have you ever wondered if there is an alternative to the expensive new off road caravans that are on the market. Even the Hybrid camper trailers are upwards of \$50,000+.

Well Brett at Brix engineering has a solution for you! He has just finished a renovation of an older viscount caravan for a family and made it ready for an outback trip (they just got back) at a fraction of the cost of a new one. Lets hear from Brett about how it came about and what he did!

Camping with some friends on a June long weekend the discussion around the camp fire came to "would it be possible to retrofit the Brix air bag independent suspension onto a 90's model Viscount pop top caravan". My mate "who's name is also Brett" owned the caravan explained that the Viscount suited his requirements. A family of four fitted perfectly ,was fast and easy to set up and a was not too big to tow. The drawback was it was not suited for off road use. I had a good look at the van and was happy with the chassis and foam sandwich construction. So...Project "Viscount" was born.

There are two big advantages to running air bag suspension. Firstly the air bags are ideal for absorbing energy, isolate vibration, and reduce shock. All great qualities in an off road suspension system. We run a large air bag at a low pressure. The second big advantage is the ability to level the caravan or camper without chocking or jacking. Just adjust each air bag and you are done. A key component of the system is the dampeners (shock absorbers). With any sort of suspension that is working correctly dampening is very important to control the system.





A few weeks later the Viscount was wheeled into the workshop. The first step was to accurately measure the chassis and wheel arches. A detailed drawing was then produced in our 3D CAD system "Solidworks". Having a 3D CAD model allowed us to check clearances and identify any issues before we started removing the existing suspension. A sub frame was designed to connect the new trailing arms and air bags to the existing chassis rails without having to modify the existing chassis.

A jig was set up on our fabrication table to replicate the Viscount chassis. The suspension system was fabricated on

the bench before disassembly and painting. The existing leaf suspension was removed and a the new sub frame fitted to the van. An on-board compressor was fitted that allowed each air bag to be controlled. The old 14" Holden rims were replaced with 17" allows to match the Toyota Prado that would be towing the van. This allowed the spares to be used on either the towing vehicle or the Viscount. The new suspension was also fitted with 12 inch Electric Brakes and 2 tonne bearings.

Other modifications included installing two new 80L water tanks and a stainless steel pull out Kitchen. The internal layout of the Viscount accommodated a pull out Kitchen well. The kitchen included a sink, 4 burner stove, internal pantry and a griller. Across the back of the Van is a double bed. The Kitchen installed under the bed making good use of the space. A hatch was installed into the side of the Van to allow access. This made it perfect for roadside stops etc.



As it happened we were joining Brett & Kate and another family for a three week trip to the Flinders Ranges, Gammon Ranges, Cameron Corner and outback NSW for the September school holidays. This was the perfect testing trip to see how the caravan performed with its new suspension and modifications. Overall we were very happy with the performance. The Viscount did not suffer any damage other than a couple of aluminium rivets that let go on the pop top. This was primarily caused by electrolytic corrosion over a number of years and was easily fixed.

All up this was quiet a successfully project. What Brett & Kate ended up with was a cross over caravan that allowed them to explore off the beaten track in comfort. The project did cost a reasonable amount however this is small change when you consider that to buy a new crossover van to go to the same places would be in the 60K + price range.



If you have an older caravan that suits your family but needs some suspension work for more adventurous trips, you really should have a chat to Brett at Brix engineering (02 9632 2388) to see what if anything can be done. Each caravan is individually assessed and quoted, but the work is first class and robust.

# WE TOUR TASSIE FOR TWO WEEKS IN A LUXURY AVIDA SAPPHIRE CARAVAN

BY ANTHONY HOOD





## AVIDA SAPPHIRE CV6624L MULTI-TERRAIN TANDEM AXLE CARAVAN

For those of you who are familiar with high quality caravans you should add the name Avida and we recently had the opportunity to try one out for two weeks in Tasmania.

The test model was the Sapphire CV6624L with the Multi Terrain tandem axle Alko leaf suspension. This is configured with a queen bed and 2 bunks which was perfect for the kids, when they got home after I received the van they wanted to sleep in it that night! On the outside the Sapphire is a fine looking van with simple aerodynamic lines. The coupling is a DO35 off-road coupling.

There are two gas bottles on the draw bar and a platform that is perfect for collecting fire wood. On the front of the van is a storage compartment that houses the electrics, jockey wheel and handle for the stabilisers. I also ended up putting all the hoses and power lead in there as well so everything to set up was in one place. Behind that compartment is another that runs across the front and is accessed through hatches located on both sides of the van. I found this perfect for storing our outdoor setting as well as the stroller and pack mule back pack (child carrying pack).

On the kerb side is another hatch containing the outdoor entertaining package consisting of a mount for the TV (good for keeping the kids quiet while cooking dinner) and speakers for the stereo. All the amenities are located on the road side as well as the outdoor hot shower.

On the inside the bunks are at the rear with the bathroom located next to them followed by the dining setting (just big enough for two adults and two kids) with the kitchen opposite. The dining table can also be converted to a bed. Above the dining setting is the stereo.



The master bed is at the front of the van with the TV (DVD incorporated) mounted on a swing arm that allows it to move around to face the dining room/kitchen. A good note is it can't be easily seen from the bunks.

There are plenty of storage areas inside the Sapphire. The master bed and bottom bunk both lift up to allow access to space underneath.

There are twenty one other cupboards and drawers placed throughout the van to accommodate all your other storage needs.

The bathroom is your standard fare for a van with the toilet on one side and the shower on the other. Now me being on the other side of 6ft made it a bit of a challenge to have a shower on the few occasions that we used the shower but I managed.

The toilet on the other hand didn't have enough room for me to sit on it in a conventional manner. Hot water is taken care of by a Truma gas/electric hot water system which worked flawlessly once I figured it out and there are two 82L fresh water tanks that can be individually switched as well as a town water inlet.

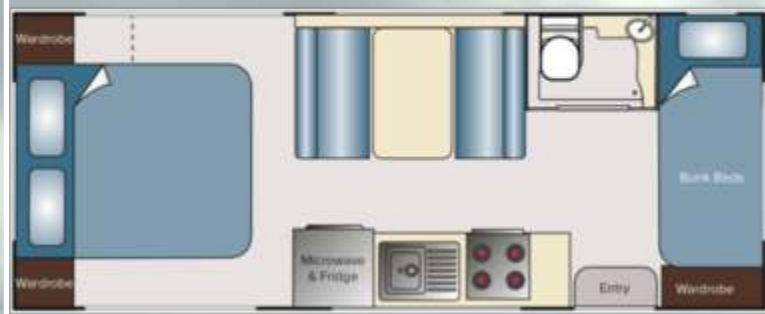
The kitchen incorporates a microwave, fridge and gas/electric cook top as well as a gas grille. Heating and cooling are taken care of by a Truma reverse cycle air conditioner.

All windows are Lexan with multi stage opening as well as being able to be locked open a little to allow air flow. Fine fly screen is fitted to all windows as well as reflective/insulated curtains. Both are attached to tracks and can be joined together to roll up and down into multiple combinations of open and closed. There is also a hatch in the roof and bathroom, the latter with an exhaust fan.





CV6616D



On the road the Sapphire towed beautifully behind the Isuzu MUX down the Hume and handled the twisty narrow roads that Tasmania is full of with ease. Did I mention the roads in Tassie being twisty and narrow, ill mention it again as they are very twisty and very narrow and the Sapphire is on the large side at 8.4m long, 2.4m wide and 3m high.

The tare weight is 2142kg with an Aggregate Trailer Mass of 3200kg giving you a 1058kg payload and 106kg ball weight, all within the MUX's specifications but I ran a weight distribution hitch to make it easier to tow when loaded.

On a side note you have to go to a workshop that has plenty of experience in wiring up tow vehicles to suit 12 pin caravans as each manufacturer has individual specifications for their wiring codes, as well as knowing how to wire up breakaway units and brake controllers.

Overall we had an enjoyable two weeks in the Sapphire with enough room for the four of us and the added bonus of being able to pull up to camp and not having to set up tents which is my usual mode of traveling. The fit and finish are great, the level of standard inclusions is comprehensive and the overall experience was awesome. The Sapphire as tested comes in at \$78,589 RDAP which represents excellent value compared to other luxury caravans. The Avida Sapphire while a new entrant should definitely be on your shopping list for a luxury family caravan.



# PROJECT PAJERO SUSPENSION



Our recent Flinders Ranges trip last year showed that the existing suspension upgrade we put in ten years ago was desperately in need of replacing. The extra weight of towing a camper trailer along with a boot full of gear was harsh over the corrugations etc. The shock absorbers were on their last legs, but the springs were still ok.

The search started for a replacement suspension system. There are lots of kits on the market for the Pajero. Like a lot of aftermarket accessories the plethora of choice makes your head spin. The key is to match what is available to what you use the vehicle for. Project Pajero is mainly used for outback touring while towing camper trailers.

Actually we didn't have to look very far for the replacement. Back in 1987 we put in an upgrade into our Toyota Landcruiser 60 series Sahara. The choice then was simple as it is today. We chose to install an Ultimate Suspension system as we were travelling around Australia while towing a viscount caravan.

So to go full circle back to where we started we chose to install an Ultimate suspension upgrade into Project Pajero as well. The first thing we needed to do was complete the comprehensive questionnaire that Ultimate sent me through. This went into detail about what accessories are fitted, what the current suspension is, what load carrying is needed, what the measurements are from the centre of the wheel to the guard on each corner etc.

The suspension upgrade involved loading the vehicle as if you are travelling as you would in the outback or however you would normally travel. This way they can determine the strength of the springs and shocks needed. You see unlike other suspension kits the Ultimate Suspension system is individually tailored to your specific needs. That is like a bespoke suspension system designed especially for you.



So I delivered the Pajero to Ultimate Suspension loaded to the hilt with gear to simulate how we would be when travelling with a camper trailer on the back . Before they got to work replacing the shock absorbers, springs and air bags, the vehicle gets test driven over various road surfaces to see what the ride is like for a comparison to how the vehicle feels after the suspension kit is fitted, it also allows them to detect any abnormalities that the customer may not be aware of and may need to repair. After that the vehicle is brought into the work shop for a weight test, shock test, wheel alignment measure and brake efficiency / proportioning test.

This gives them the base measurements for the vehicle when it came in and it will show any faults in the operation of the brakes and brake proportioning setup.

After this the vehicle has its heights measured both before and then after the suspension kit has been fitted, it then gets the brake check carried out again and another test drive to settle the suspension and check for possible noises or issues, after the road test we put it back on the hoist and carry out a tighten and check making sure the suspension is all functioning correctly. The new system comprised high density shocks, specially designed progressive air coils, heavy duty airbags with high pressure sleeves fitted to prevent a repeat of the airbags getting caught in-between the coils as before



So we picked up the Pajero and took it for a drive. The first thing we noticed was how high the car was after the upgrade. The lift was back to where it was all those years ago. Clearance was substantial. The second thing we noticed was just how compliant the new suspension was. Before where the Pajero would clunk and bump over irregular roads it now was so smooth.

Over dirt roads and corrugations the new shock absorbers and springs were superb. We hooked up an Avida Caravan behind. This was the Avida caravan we recently took to Tasmania, and the Pajero barely noticed it was there all without load levelling assistance.

Once we have had the Ultimate Suspension system installed we have towed camper trailers, boats, bikes, gone to the arm, gone 4WD driving and used the car as a daily driver. The suspension is chalk and cheese with the old system. It doesn't sag when hooked up to tow something, it is more compliant over all road surfaces and has more articulation when off road.

There are many aftermarket suspension systems you can choose from. A lot of them make many claims and often are suited for different purposes. However there are none better than a bespoke Ultimate Suspension system. As we have mentioned Project Pajero is all about family outback touring towing a camper trailer. This requires a compromise in the suspension system as the vehicle is used as a daily driver and needs to be smooth and compliant around town while being able to cope with the hours and demands of corrugations, forest trails and outback roads. As far as Project Pajero is concerned we absolutely made the right choice.



# TAKES TOUGH TO A WHOLE NEW LEVEL.

## AUSTRALIA'S FAVOURITE 4WD TYRE, PUT TO THE TEST.

When considering the best tyre for your off-road adventures, it pays to have an expert on your side. So when testing the brand new Bridgestone Dueler D697 LT, we enlisted an outback 4WD legend – Allan Whiting. Allan's passion is off-road adventuring and he's been writing about and testing 4WD tyres for over 30 years.

To put the all new Dueler D697 LTs to the ultimate test, Allan put together a gruelling itinerary, with plenty of off-road action and lengthy highway driving at speed. Setting off from Adelaide, Allan and the Bridgestone team took three 4WDs fitted out with Duelers up to Alice Springs, around the notoriously harsh West MacDonnell Ranges, and back again. Tackling gravel and sandy roads, riverbeds and sharp stony tracks, what they found was that Australia's favourite 4WD tyre takes tough to a whole new level.



Its greater tread depth is such that sharp objects often can't penetrate the tread grooves and, even if they do, the under-tread structure protecting the steel belts forms a thicker shield to resist tyre casing damage.

The D697 LT also has heavier-gauge steel belts than previous generation Duelers, encased in a thicker tread area structure. These improved belts offer even more puncture resistance.

When it came to testing the Dueler D697 LTs enhanced puncture resistance we found that the tyre was more than ready to meet any challenge.

**Allan Whiting**  
Outback Travel Australia

*Allan Whiting*



**"LIGHT TRUCK (LT) TYRES HAVE PROVED TO BE THE MOST PUNCTURE-RESISTANT BUSH TYRES AND THE NEW D697 LT IMPROVES ON THE PAST"**  
ALLAN WHITING.

In the early days of 4WD outback adventuring, people wasted a lot of valuable travel time patching tyre tubes and changing tyres. Fortunately, tyre durability has come a long way in recent years, and the new Dueler sits at the forefront of enhanced puncture resistance.

It's a common misconception that most punctures occur in a tyre's sidewall. The majority of tyre failures actually start with a puncture in the tread area. Because the sidewall is often 'blown out' during such failures, it's just assumed that the sidewall was the original problem area.

This is where the purpose built Dueler D697 LT demonstrates its superior design and structural integrity. Cut test comparisons with sections of standard 4WD tyres reveal that the new Dueler's entire structure is thicker – particularly in the vulnerable shoulder and under-tread areas.

### OPTIMISED TREAD PATTERN DESIGN

Reduced void ratio minimises puncture risk

### TWO HEAVY DUTY STEEL BELTS

Maximised high tensile steel belt gauge for the ultimate defence against harsh Australian conditions



### PROTECTIVE PLY

Full width additional nylon ply for extra protection from staking and improved durability

### ADVANCED UNDER TREAD COMPOUND

Excellent heat dispersion properties for ultimate heat resistance and durability

### LIGHT TRUCK CONSTRUCTION

Thicker gauge sidewall and casing components for improved puncture resistance and wear life

## Honda's New TRX500FM1 & TRX500FM2

Honda's new 2014 TRX500FM1 and TRX500FM2 which will replace the former TRX500FM and TRX500FPM, will be more rugged than ever when they reach Australia in March 2014\* thanks to a host of new features. Built to make hard work easier, for 2014 Honda's TRX500FM1 and TRX500FM2 boast engine advancements, a new stronger chassis, updated suspension and re-designed styling.

For better handling and a smoother ride an all-new double-cradle steel frame has been developed with Computer Aided Engineering and the suspension has been tuned for an improved connection between rider and machine. In addition, a brand new enclosed axle swingarm has been developed to balance and optimise strength and rigidity which, along with a new softer seat, improves rider comfort.

To keep riders out of tricky situations, an all-new electronic front differential TraxLok® selectable 4WD system has been developed. TraxLok® lets riders switch between two-wheel drive and four-wheel drive with the push of a button and now there's an option to lock the front differential solid, driving full power to all wheels, which is particularly useful in rocky or uneven terrain.

Revised mapping for the electronic fuel injection program gives the strong liquid-cooled 475cc, single-cylinder, OHV, four-stroke engine improved power delivery and throttle response as well as increased fuel efficiency. An in-tank fuel pump has also been adopted to increase reliability.

All of these new features have been wrapped up in new aggressively styled bodywork that not only looks good, but has been designed to protect riders from mud and other debris and to hold up in the harsh Australian conditions.

Honda's TRX500FM2 boasts the addition of Honda's Electric Power Steering (EPS) which is designed with torque and speed sensors to reduce steering effort and rider fatigue when the going gets tough.



## Honda's all new 2014 TRX420

Ready to impress loyal fans with their completely new frames, updated suspension and re-designed styling, the new TRX420FM1, TRX420FM2, TRX420FA2 and TRX420TM1\* also boast elevated levels of performance.

Featuring an all-new chassis and a redesigned frame, the TRX420s also now have longer-travel suspension with outstanding performance over rugged terrain and class-leading handling. A brand new enclosed axle swingarm has been developed to balance and optimise strength and rigidity, while improving rider comfort.

Wrapping the all-new chassis is newly designed bodywork which has distinctively aggressive styling. A new plush seat made from thicker, softer foam teams up with superior ergonomics making long hours in the saddle an easy task.

All four TRX420 variants feature the same powerful, longitudinally mounted liquid-cooled engine with new fuel injection settings for improved fuel efficiency and reduced emissions. With the addition of Honda's Electric Power Steering (EPS), the TRX420FM2 and TRX420FA2 have improved all-round steering action.

Along with the EPS system, the TRX420FA2 also features Honda's automatic Dual Clutch Transmission (DCT). This offers the compact size and strength of a manual transmission - no belts to slip, break or burnout - with the convenience of an automatic transmission.

The TRX420FM1 and TRX420FM2 offer Honda's TraxLok® 4WD system which allows riders to switch between two-wheel drive and four-wheel drive with the push of a button.





## Suzuki Extends Support Offer For Aussie Farmers

Suzuki has extended its support levels to Aussie farmers. The company is offering up to \$1500 value added bonus\* available on all models from Suzuki's hard-working, value-packed farm ATV range.

Until March 31, Suzuki dealers will apply a value added bonus which can be spent on accessories, riding apparel, discount off the purchase price or even servicing on all KingQuad 750, KingQuad 500, KingQuad 400 & 300 variants and the versatile all-rounder Ozark 250.

In addition, Suzuki has also extended its value-packed finance deal on its farmer-friendly ATV range. Until March 31, selected Suzuki Farm ATVs will be available on a finance rate of just 3.00% per annum^ over three years with a 30% deposit for approved customers (limited to commercial loans).

"We know how tough conditions are for Australian farmers at the moment and we would like to offer this generous deal to help them through these difficult times," said Suzuki Australia Motorcycles National Marketing Manager Lewis Croft.

The first manufacturer on four wheels, Suzuki's ATV range offers purpose built features for Australian rural conditions with benefits such as fuel-injection, a choice of automatic or manual transmissions, selectable 2WD or 4WD and an option of two power steering models included in the KingQuad line-up.

The Suzuki's Farm ATVs start at a low Recommended Price of just \$5,990\*\* for the Ozark 250, up to \$13,990\*\* for the KingQuad 750 with Power Steering.



INTRODUCING THE ALL-NEW POLARIS UTE

POLARIS  
**UTE**  
DO MORE...



## Polaris UTE 570

The Polaris UTE 570 offers the utility and capabilities of the traditional farm ute combined with the nimbleness and agility of an ATV. The revolutionary new design starts with the legendary attributes of a Sportsman ATV, such as Independent Rear Suspension (IRS) with 24.1 cm of rear travel and On-Demand True All-Wheel Drive (AWD), adds a utility-styled tipping rear dump box, characteristic of the hard working farm ute, and offers the package at an attractive \$9995 price point.

"This is an enormous leap forward for ATV development," said Polaris Australia and New Zealand Managing Director, Peter Alexander. "This is a vehicle that not only offers the ultimate utility and versatility, but also heavy duty features designed specifically to withstand the rigors of our market."

To ensure the vehicle can be used on a farmer's entire property with limited or primary producer registration, Polaris also has fitted the vehicle with indicators, mirrors and a horn as standard features to save customers the expense of retrofitting these items when required.

For steering ease and control under all conditions, the Polaris UTE 570 offers EPS as a standard feature and Polaris' legendary On-Demand True All-Wheel Drive (AWD) system which automatically engages when the rider needs more forward traction and reverts back to two-wheel drive automatically when the AWD is no longer needed.

For optimal control on descents, the vehicle also features a new Polaris 4 Wheel Descent Control (4WDC), which was designed specifically for the hills and duty cycles of Australia and New Zealand. The system automatically engages all four wheels when travelling down slopes for optimal traction and control in all conditions.

The Polaris UTE 570 is being offered in Blue Fire and will be available in March, 2014.



## Polaris Introduces Revolutionary New Off-Road Vehicle

Polaris® Industries Inc. (NYSE: PII), the leading manufacturer of off-road vehicles, has announced the company is defining an entirely-new type of off-road vehicle with the introduction of the Sportsman® ACE. The vehicle's architecture is completely new to the industry and features a revolutionary, sit-in chassis that is nimble and comfortable to operate. The design of the new Sportsman ACE provides a confidence-inspired ride, all while being both farm and trail capable, offering an all-new agricultural or off-road experience.

"The introduction of the Sportsman ACE is part of our strategy to remain the leader in the powersports marketplace by introducing innovative products that define their categories," said David Longren, vice president of Polaris' Off-Road Division.

"In creating the Sportsman ACE, we wanted to not only appeal to current farmers, commercial users and off-road enthusiasts, but develop a vehicle that brings new customers to both work and recreation. We accomplished this by coupling an easy-to-use, nimble platform with a confident and secure ride that, together, provides drivers with an entirely new experience."

The revolutionary, new design combines the size and nimble handling of the Sportsman All-Terrain Vehicle (ATV), and the confidence and comfort of the RANGER and RZR side-by-sides, in a rider-centric design with an easily-transportable 121.9 cm width. A comfortable and confidence-inspiring centralized seating position connects the driver directly with the machine. Polaris also positioned all the major components, including the driver, centralized between the four wheels for an incredibly responsive ride.

The Sportsman ACE boasts 26.04 cm of ground clearance and 24.1 cm of rear travel due to its fully independent rear suspension (IRS) outfitted with performance, twin tube shocks featuring adjustable preload.

Powering the Sportsman ACE is an all-new 32 horsepower ProStar™ Electronic Fuel Injected (EFI) Engine featuring an internal counter-balance shaft for smooth, vibration-free power. The dual overhead camshafts and a 4-valve cylinder head work with the advanced engine management system to precisely deliver the fuel charge for impressive power and instant, predictable throttle response; while the lightweight efficient transmission captures every ounce of power to deliver it to the ground. The engine is designed to reduce internal friction which dramatically reduces noise and significantly increases efficiency making it the most fuel-efficient engine Polaris has offered. This coupled with the 19.87 liter fuel tank provides the vehicle with excellent range for long days on the paddock or trail.

For a secure and comfortable ride, the Sportsman ACE has a unique ROPS cab frame previously found only on side-by-sides. The secure, high-backed, adjustable bucket seat is paired with an adjustable steering wheel to give the driver unmatched flexibility when it comes to comfort in the machine. It's also equipped with a 3-point seat belt, and has side bolsters to keep the operator properly positioned in the center of the machine. The steering wheel offers 8.9 cm of tilt adjustment and the driver's seat slides back and forth by 10.2 cm to customize the fit for the rider.

For added comfort, an integrated dead pedal gives the driver a place to perch their left foot while the right nests in the integrated heel pocket and throttles the powerful ProStar engine. The cockpit's flow-through design also makes ingress and egress easy, and new side nets feature a metal rod to easily secure them both for clipping and positioning the nets to the back of the vehicle while exiting. The vehicle also is equipped with powerful halogen lighting so the fun doesn't stop when the sun goes down.

For the utmost confidence on the farm or trails, the Sportsman ACE is equipped with the same legendary On-Demand True All-Wheel Drive (AWD) system found on all Polaris Off-Road Vehicles. The system eliminates the guesswork by automatically engaging when the rider needs more forward traction and then reverts back to two-wheel drive automatically when the AWD is no longer needed.

The driver also has assured stopping power from the linked, four-wheel disc brakes with braided stainless steel brake lines that provide optimum response and minimal fade. For added protection, accessories such as doors, front and rear brushguards, rock sliders, and a variety of custom wheel and tire packages not only protect the vehicle but add a more customized look. To protect the driver from the elements, a Lock & Ride roof, windshield and rear panel install in seconds to offer a quick solution for all climates.

Polaris off-road vehicles have built an unprecedented reputation for helping owners get work done and the storage capability of the new Sportsman ACE is no different.

With an integrated 10.6 litre semi-dry, front storage compartment, and a high-capacity Lock & Ride® cargo box with rack extenders and rear tie-down rails, that also accepts the accessory Lock & Ride cargo box for additional dry storage, the vehicle can carry up to 260 kg of gear.



The Sportsman ACE is pre-wired for the installation of a winch with up to 3,500 lb/1587 kg of capacity, and the hardest-working DNA of Sportsman was further instilled with a 680 kg towing capacity, for capability when it's time for serious work.

Polaris will also offer more than 25 accessories for Sportsman ACE including doors, winches, cabs and storage to suit their needs. "This is a completely new proposition for the Australian ATV and side x side market," said Polaris Australia & New Zealand Managing Director, Peter Alexander.

"This is a vehicle that encompasses the very best features of both ATVs and side x sides, with unrivalled capabilities for the Australian farmer coupled with outstanding performance for weekend recreational riders."

"One of the great attractions of ATVs has always been their sheer versatility, nimbleness and agility. Sportsman Ace continues to offer all these things with the added benefit of additional features to further ensure the security of the operator.

"The issue of ATV safety has been a pertinent one in Australia for many years. Whilst the largest variable in safety is inevitably the experience, training and attitude of the rider along with wearing appropriate safety gear and using machines within manufacturer's recommendations, Sportsman ACE provides another option with a unique combination of features.

"This model is an off-road vehicle with a rich Polaris Sportsman heritage. What is unique is the provision of features which have, until now, only been seen on side by side vehicles. "And like anything for the Australian market, this vehicle needs to be seriously heavy duty with capacities and capabilities which lead the marke ... and on that front, Sportsman ACE certainly delivers."

The Polaris Sportsman ACE will be available in authorized Polaris dealers from April, 2014.

\*

#### Key Features of Sportsman Ace

- Powerful 32 HP ProStar Engine
- Unique single passenger cab design gives a whole new off-road experience

#### Confident and Secure

- On-Demand True All-Wheel Drive
- Unique single passenger cab design
- 3-Point Seatbelt
- Protective Netting
- Assured Stopping Power with Four-Wheel/Four-Disc Braking System

#### Comfort and Convenience

- Bolstered Bucket Seat with 10.2cm of adjustability
- Easy Ingress and Egress with Flat Floor Plan
- Adjustable Steering for optimum control
- 260kg Rack and Storage Capacity
- Integrated Foot Rest
- Integrated Accessory Door System
- Convertible Rear Cargo Box
- 680kg Towing Capacity
- Powerful Halogen Lighting

#### Easy to Ride

- Independent Rear Suspension with 24.1cm of Suspension Travel
- 19.87L Fuel Tank with Electronic Fuel Injection
- Rider Centric Design

#### Compact and Nimble

- Low-Center of Gravity for Stable and Responsive Ride
- 32 HP ProStar Engine with Dual Overhead Cams
- Trail Compliant 121.9cm Width
- 156cm wheelbase
- Lightweight Transmission for Efficient Power Transfer
- 26.04cm Ground Clearance





### 2014 Suzuki QuadSport Z50

Suzuki has unveiled the latest version of its QuadSport Z50 fun bike, offering the very best in performance, safety and reliability for budding motorcyclists.

"Getting outside and exploring together is one of the joys of being a parent; sharing adventure, making discoveries and having fun. That's exactly what the Suzuki QuadSport Z50 is all about," said Suzuki Australia Motorcycles Marketing Manager Lewis Croft.

"Like Suzuki's full-size, high-performance ATVs, it's packed with quality, and style. The only difference is the QuadSport Z50 is perfectly sized to fit the younger fun-seeker."

Boasting a 49 cubic centimetre 4-stroke, single-cylinder engine, the QuadSport Z50 provides hours of smooth, quiet power delivery.

The easy-to-operate automatic makes the riding experience simple and fun, delivering torque at lower speed and smooth, quiet performance.

"The Suzuki QuadSport Z50 allows parents to govern the speed and power with a simple, screw-type throttle limiter. That means the parent matches the speed and power to their child's ability.

"Buying a Suzuki QuadSport Z50 also gives parents the perfect tool to instil good, safe riding habits such as wearing all appropriate safety gear," said Croft. The 2014 Suzuki QuadSport Z50 is available now for a recommended price of \$2,890\*.

For further information on Suzuki's QuadSport Z50, interested customers should visit their local Suzuki dealer, who can be found through the Dealer Locator on [www.suzuki.com.au](http://www.suzuki.com.au).



## Yamaha releases three-seater (ROHV) Recreational Off-Highway Vehicle .



YMA has released the all-new Viking, the company's first ever multi-purpose three-seater Recreational Off-Highway Vehicle (ROHV). This genuine off roader is built tough for Aussie conditions, comes with a three year factory backed warranty and, for a limited time, 3% farmer finance.

Viking focuses on safety and comfort in order to give confidence when manoeuvring this new Yamaha ROHV through any kind of terrain. The new machine is based around a high-torque single-cylinder liquid-cooled engine housed in a rugged chassis, and every aspect of engineering - from power supply through to handling character - is focused on the people in the middle of the machine.

The driver and passengers have a lot of space in the Viking, and there's also plenty of room for the cargo. A pallet size steel cargo bed offers plenty of room for daily work tools and equipment during the week, and on weekend trips there's lots of space for carrying camping and fishing gear. The end result is a well-balanced ROHV that combines Yamaha's well-known rough terrain ability together with usable and sensible power, as well as functionality and comfort.

### VIKING HIGHLIGHTS OVERVIEW

- Yamaha's first-ever multi-purpose three-seater Recreational Off-Highway Vehicle (ROHV)
- Focus on safety, functionality and comfort
- Spacious seating layout for driver and two passenger
- Useable and controllable power
- High-torque single-cylinder liquid-cooled engine
- Rugged all-terrain chassis
- Pallet size cargo bed



## 2014 Yamaha Grizzly 700 EPS ATV

Since its introduction the Grizzly 700 EPS has been widely regarded as the benchmark model in the large-capacity automatic drive ATV class. Now Yamaha has released a new Grizzly 700 EPS aimed at raising the bar in this large-capacity ATV class even further. The numerous technical changes for 2014 further enhance chassis and engine performance and satisfy the demands of everyone from leisure-oriented trail riders right through to professionals who use the rugged ATV in harsh operating work conditions.

The demand to improve environmental friendliness is matched by a new cleaner-running engine with reduced emissions and increased fuel efficiency. The demand for greater performance is satisfied by increased torque and horsepower output and crisper throttle response of the latest generation 686cc engine. And the demand for greater comfort is met with increased stability, while reduced fatigue is matched by revised suspension set up, new tyres and lighter steering.

The Grizzly 700 EPS is a true All Terrain Vehicle. With a dry weight of 272kg, this rugged and reliable machine allows the driver to take control in a wide range of situations. With its lively and more powerful engine, and a redesigned suspension set up and lighter steering, this truly versatile ATV delivers greater comfort and reduced fatigue when working, and gives more enjoyment and confidence on the harshest terrain.

The Grizzly 700 EPS rugged steel frame is now equipped with additional gussets which increase overall chassis rigidity to adapt to the wider wheel track. One of the most significant chassis changes is the use of a new suspension design that features longer upper and lower front and rear A-arms. These new arms are 30mm longer than the design used on the 2013 model, and the longer lower arms benefit from a new lightweight design



# Product and Services Directory



**BRIDGESTONE**

THE NEW  
**DUELER  
D697 LT**



BE CONFIDENT ON YOUR NEXT  
**ADVENTURE**

INSIST IT'S GENUINE

Always wear your seat belt, and always use proper driving and maintenance to ensure a safe and enjoyable performance. Read your owner's manual for more information. Always use proper maintenance and safety for the best performance. Always use seat belts.



opposite lock

NEW OPEN



**MAXTRAX**  
take the easy way out!

WWW.MAXTRAX.COM.AU



The  
Ultimate  
SUSPENSION



Suttons Mitsubishi Amcliffe  
EXPERT SERVICE FOR YOUR PAJERO

Mention "Project Pajero" and get  
**10% OFF** YOUR NEXT SCHEDULED  
PAJERO SERVICE\*

Ph 9335 9000



**HILLBILLY  
CAMPING  
GEAR**

Australian Made Camping Gear



**KIZLYAR**  
Knives & Outdoors Gear  
1300 83 99 66



**GME**



**CARIBEE**



SOUTHERN  
CROSS  
CANVAS PRODUCTS



**PROJECTA**  
EXCELLENCE IN BATTERY MAINTENANCE AND BATTERY POWER

# **2014 TOYOTA HILUX 4X4 SR5 DUAL CAB UTE REVIEW**





Lee Kernagan at the Tamworth Country Music Festival

Toyota has upgraded its perennially popular Hilux Dual Cab range and I have just returned from a drive program through the State Forests around Nundle and Tamworth to check out the improvements. With a long history in Australia the Hilux has now sold over 800,000 units since it was first introduced in 1971.

Currently it is the third highest selling vehicle after the Mazda 3 and Toyota Corolla. That says something. HiLux has been Australia's leading commercial vehicle for the past 16 years in a row and the top-selling four-wheel drive vehicle for the past nine. In recent years with the influx of vastly improved Dual Cab Utes such as the Mazda BT50, Holden Colorado, Isuzu D Max and Ford Ranger, the Hilux, being in the middle of its model life cycle, has found itself falling behind. The private sales results has reflected this.

Hence the model upgrade and extra features. Let's have a look at those and what they mean for the iconic Hilux. It's important to note that the upgrades are to the Dual Cab range only, and that is the most popular segment.

Before I delve into the technical stuff it would be remiss of me to write this review in isolation of the context in which we participated in the drive.

We went to the Tamworth Country Music Festival during which we wandered into the back blocks of the Nundle State forests.

Many corporations both large and small talk about Corporate Social responsibility. Some give it lip service, many participate to varying degrees, but few if any compare to Toyota.

They don't talk much publicly about corporate responsibility, they just get on and do it. It would be easy to down play or under estimate the role Toyota plays in rural Australia. Yes there is a degree of self serving as they sell an awful lot of cars there, but the level of support they provide goes way beyond any marketing strategy with measurable results.

It appears to be deep within the culture that they are part of the very fabric of Australian Rural community. The feeling is reciprocated, the Australian bush loves Toyota and to be honest the Tamworth Country Music Festival just wouldn't be the same without them as well.

Toyota now offers customers 11 Double Cabs in an extensive range that spans 22 variants across the entire range. Note that all 4x4 HiLux variants now attract the maximum five-star ANCAP safety rating.

Cosmetic internal improvements include new display, audio systems and fresh interior colours and materials. Across the range the centre stack display audios feature a 6.1-inch screen, auxiliary and USB inputs, iPod and Bluetooth connectivity, plus audio control switches on the steering wheel hub.

The top of the line SR5 variants have a reversing camera and a satellite navigation system with SUNA™ Live Traffic updates as standard – all viewed on the display audio screen. My view is that ALL vehicles (including sedans etc) should have reverse cameras for safety and it should be mandatory for a 5 Star ANCAP rating.



The reverse camera provides great visibility however has no guide lines to assist. Other than the obvious safety aspect, reverse cameras are a useful feature when 4wd driving as they allow the driver to see what is behind if you need to turn around on a tight trail for example.

They are also invaluable when hitching up a camper trailer or boat etc. The camera is mounted high on the tailgate which would assist in preventing it becoming dirty when off road but appears to look slightly vulnerable.

The five-star safety rating for 4x4 HiLux is achieved with enhancements including the standard fitment of front passenger seat-belt reminder, three-point seatbelt for the centre-rear seating position, stability and traction control, brake assist and electronic brakeforce distribution. Stability control was previously a \$1,500 option on the 4x4 mid-range SR grade.

Safety features include ABS, EBD, BA, TRC, VSC, and a heap of air bags for the front driver and passenger, side curtain and side airbags. I can attest to the benefit of having traction control as on the drive we rounded a corner only to be confronted by a vehicle coming the other way on our side of the road. If not for the traction control I suspect I would have been extracting the Hilux from the trees that lined the road. We weren't going fast either.

Inside the driver's seat is electrically adjustable, clad in comfortable leather (a \$1500 option on the 4X4 SR5 dual cab) and has good lumbar support. In front of the driver is a height adjustable only steering wheel with controls for the multi-information display (MID), telephone and voice recognition.

The MID, viewed on a liquid crystal display above the centre stack, shows current and average fuel economy, average vehicle speed, cruising range, outside temperature, a compass and time. This feature is new to SR, as are the Optitron dials for speed, engine revs and fuel tank/coolant temperature.

Rear seats are comfortable and the seat squab is deeper than many others providing good knee support. As many readers know I am slightly larger than the average bear so I sat in the rear seat for a while to see how comfortable it was and I was pleasantly rewarded. There was plenty of knee, foot, shoulder and head room. Like most utes its better for two but will hold three.

Externally the HiLux 4X4 SR5 Extra Cab has upgraded to a 17" alloy wheel (from the previously ridiculous 15" alloy). SR 4x4 variants have gained a 225/70 17-inch all-terrain tyre. The 17inch wheels and tyre combination makes an improvement to the overall handling and dynamics.

The full HiLux range retains its three body styles, three equipment levels, three engines and three transmissions driving either the rear or all four wheels. The variants I drove were the 4X4 Dual Cab SR and SR5 in both the 5 Speed manual and 5 Speed Auto with the common rail diesel. This engine is the most popular in the range and produces 126Kw of power @ 3,600rpm and torque of 343Nm @ 1,400rpm. The diesel is frugal and sips fuel at a rate of 8.7l/100km.

These power and torque figures are a little low when compared to the latest competitors. However figures don't always tell the whole story. It is true that the Hilux feels underpowered when driven side by side with say a Holden Colorado, but in isolation it produces a smooth power delivery and the new transmissions extract the most from the engine.

There is an alternative 175kW/376Nm V6 petrol engine however the diesel is far and away the better engine. Towing capacity is 2500Kg with a tow ball rating of 250Kg.

The 5 speed auto transmission is a dog leg style, unfortunately there is no Tiptronic however it works well enough, especially off road.

Our drive program included plenty of sealed road work and the ride was smooth with little road noise from the tyres. On dirt the Hilux was very assured with the 17inch tyres combination smoothing out many of the rough edges.

On the rougher sections the Hilux handled low range crawling with the best of them. It's here that the long heritage shows its class. Off road the Hilux 4X4 matches the best of its competitors.

Price changes with the expanded feature list are limited to between 1.2 and just under 3.0 per cent.







The entry price for the HiLux range remains from \$18,990+, with 4x2 Double Cabs now priced from \$27,490+ and 4x4 Double Cabs from \$40,990+. Prices are MLP and don't include extras Every new HiLux is covered by the capped-price Toyota Service Advantage at a maximum of \$170 per service^^.

The Toyota 4x4 Dual Cab Hilux is in the middle to later part of its model life cycle and as such these improvements, while welcomed and substantial still have the Hilux slightly behind the big four Dual Cabs in power and performance and towing ability. Off road it is the equal of all of them and better than many.

However the Toyota Hilux 4X4 Dual Cab Ute remains a robust, highly competent, smooth riding and popular 4X4 Dual Cab. That is obvious by the fact that it outsells every other Ute on the market





# COOKING WITH BRIANNA





## Cheats Lamingtons

**Makes: 6-8**

**Preparation time: 20 minutes**

### Ingredients

- 4 cups desiccated coconut
- 3 cups icing sugar
- 1/4 cup cocoa powder
- 1/2 tsp melted butter
- 100 mls boiling water
- 1 tsp vanilla essence
- 2 square bought sponge cake

### Method

1. Spread the coconut onto a large tray
2. Cut sponge cake into 6-8 portions, which ever size portions you would like.
3. Sift the icing sugar and cocoa powder into a bowl. Add butter and gradually add enough warm water to form a slightly running icing
4. Dip each cake portion in the icing to coat completely. Roll each piece of cake in the coconut, then place on a wire rack an in the fridge until set.





## Bacon and Egg Pie's

Makes: 4

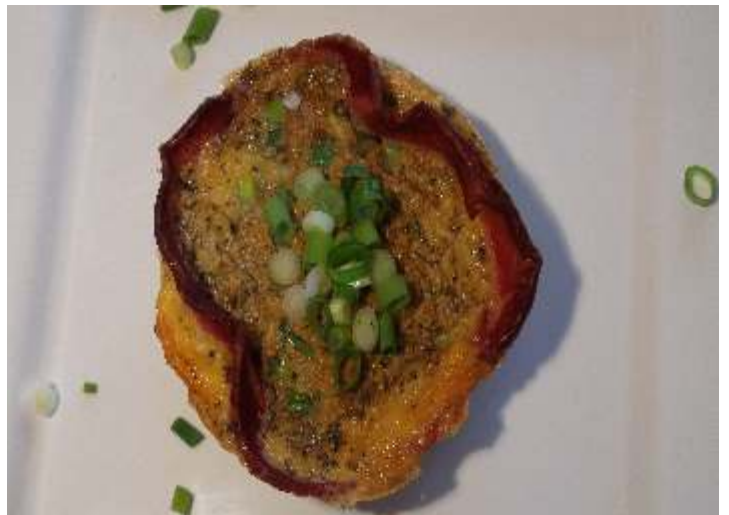
Cooking time: 35 minutes

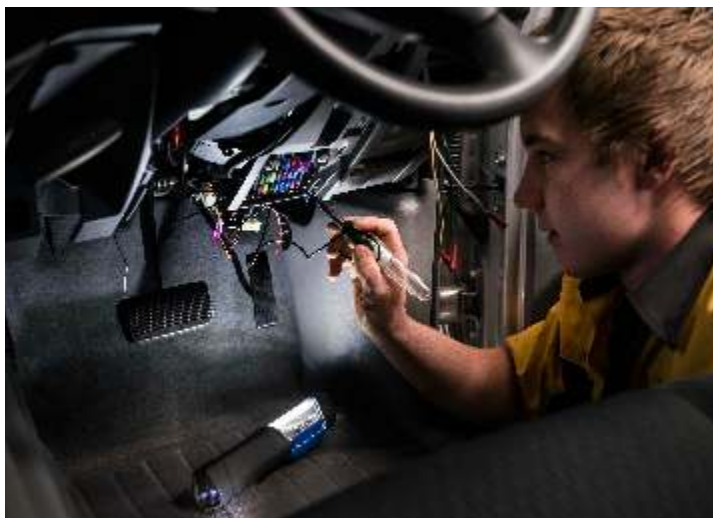
### Ingredients

Butter, for greasing  
8 rashers of short cut bacon  
8 eggs  
2 shallots  
Salt, pepper and mixed herbs

### Method

1. Pre heat oven to 180 C and grease 4 individual round pie tins
2. Line each pie tins with 2 bacon rashers and place in oven for 10 minutes or until crisp
3. Finely slice shallots
4. Crack 2 eggs in a bowl and whisk in some of the shallots and 2 pinches of salt, pepper and mixed herbs.
5. Pour into pie tin over the bacon and repeat for the other tins. Cook for 25 minutes or cooked to your liking.
6. Serve hot and enjoy.





## Narva Inspection Lamp for Automotive Students

The automotive service and repair industry is a diverse, dynamic and continually growing sector. In Australia, this industry employs more than 270,000 people across more than 60,000 businesses and has an annual turnover of \$80 billion.

The automotive courses offered at Polytechnic West are designed to equip students with the skills and knowledge needed to work in this field including technologically advanced workshop tools such as Narva's 'See Ezy' Heavy-Duty/High Powered L.E.D Inspection lamp. Polytechnic West is one of the largest TAFE training providers in Western Australia and its automotive department, which has an enrollment of 1,500 students, provides hands-on training within real life conditions.

A number of inspection lamps are currently being used at Polytechnic West's Carlisle and Pinjarra campuses by Automotive Electrical, Automotive Light Mechanical, Automotive Air Conditioning, and Heavy Vehicle Mechanical students.

Auto Electrical student, Caitlin Okely, said she is impressed with the inspection lamp's design. "The inspection lamp feels quite solid despite its compact size," Caitlin said. "The spread of light is surprisingly large for such a small lamp – perfect for inspecting dark and tight areas within electronic unit assemblies. "The inspection lamp's large grip is great for when I have oily or greasy hands.

Learning how all components fit inside a vehicle can be a difficult and time consuming task; however with the help of quality inspection lamp, the job gets a lot easier for those wanting to become a mechanic. Narva's See Ezy' Heavy-Duty/High Powered L.E.D Inspection lamp is available from all leading automotive, four wheel drive and transport retailers for RRP \$225.

## TOYO TOUGHENS UP FOR 4x4 TYRE BOOM

With combined SUV and 4x4 utility sales now representing over 40 per cent of all passenger vehicles sold in Australia, demand for all-terrain tyres is booming. In response, Toyo Tires is rolling out its new Open Country A/T II - a state-of-the-art all-terrain tyre suitable for a range of off-road capable utilities and wagons.

The new tyre boasts significantly longer tread life than its durable predecessor, the Open Country A/T, and independent testing in the United States found it achieved 40 per cent more mileage than a leading competitor. The secret to Open Country A/T II's tread life is an innovative compound featuring a new anti-wear polymer and smaller carbon particles, which bond more strongly to improve wear resistance.. The tread profile has been optimised for better contact pressure distribution to reduce uneven wear, while tie bars between the outer blocks help resist shoulder wear. Open Country A/T II has two layers of joint-less spiral cap ply for improved puncture-resistance, while thicker rubber on the upper sidewalls improves bruise resistance.

The tread pattern is more aggressive, featuring distinctive staggered and scalloped shoulder buttresses for better off-road bite. Fringed edges on the tread blocks aid initial traction, and wide grooves between the blocks improve mud performance and stone ejection.. Toyo, assisted by professional drivers Team D-Max Australia, undertook comparison testing of Open Country A/T II against two popular AT tyres from other brands. The testing determined that the Toyo matched the class-leaders in the dirt with enhanced handling and braking safety on road.

On bitumen, Open Country A/T II had the best mid-corner grip during both wet and dry slalom manoeuvres and the best dry braking performance. Open Country A/T II is available now in popular sizes, and the range will be expanded to 31 sizes - most available in a light-truck construction.



## TOYOTA HILUX: NINE YEARS AUSTRALIA'S BEST-SELLING 4WD

Toyota's HiLux has notched up its ninth straight year as Australia's best-selling four-wheel drive (4WD) vehicle, according to the latest national sales figures.

The tough workhorse led the way in 2013 with customers buying 29,344 HiLux 4WD variants, more than 7,500 sales ahead of its nearest rival. In doing so, HiLux established a new Australian record for 4WD sales in a single year, eclipsing the previous mark it set in 2012.

HiLux began its run as Australia's best-selling 4WD in 2005 and has just completed its 16th consecutive year as the country's most prolific seller among all commercial vehicles, including SUVs.

Last year, HiLux 4WD and 2WD deliveries totalled 39,931 combined, making HiLux the third biggest-selling vehicle on the local market. It has topped Australia's monthly sales charts on 13 occasions, including twice last year. It is the only vehicle of its type to have achieved that distinction.

The popularity of HiLux in 2013 was a significant factor in total Australian sales of light-commercial vehicles (LCVs) passing 200,000 for the first time.

The final tally was a record 204,566 vehicles, an increase of 3.5 per cent. Toyota remained the dominant LCV market leader with 56,938 sales, outselling the combined totals of its two nearest rivals.

HiLux 4x2 was the best-selling vehicle in its segment with 10,587 sales - more than 4,500 ahead of any other vehicle.



The latest innovation in off road camping will go where no other caravan can



# VISTA RV

# CROSSOVER

Introducing Vista RV, a new name to the outback touring market



**"Our concept is an innovative 'crossover'**

*camper/caravan, providing a unique blend off road camper freedom and function with the comfort and security of a caravan."*



## Opposite Lock Narellan NSW

## Services

Chris Murphy and his boys at Opposite Lock Narellan are a specialist retailer supplying accessories to owners of four wheel drive, commercial and passenger vehicles. The Opposite Lock range of accessories is for serious off-roaders and enthusiasts, representing the highest possible quality and best value available anywhere in Australia.

Chris's product range, expert knowledge base and the first class service support he provides to clients is second to no-one. The boys at Opposite Lock Narellan have a passion for their work that comes through in everything they do. At Opposite Lock Narellan we believe in offering our customers the widest possible range of products and helping them make the best possible choice.

For instance, if you're after a bullbar we can show you steel, aluminium and poly bars. Or if you want to carry more gear you can choose between a set of roof bars, steel or aluminium racks, roof pods,

storage boxes and rack sacks or we can show you how to make the most of your interior space.

At Opposite Lock Narellan the choice is yours. Opposite Lock Narellan offers the full service, from the moment you walk into our doors, your off road experience begins, this includes taking the time to give quality advice, the right products to suite your specific requirements, superior quality fitting, full after-sales service, backed up by our nation-wide warranty. When you're headed out bush you need complete confidence in your equipment and that's exactly what you'll get from Chris at Opposite Lock Narellan. He is a 4x4 enthusiast and uses his 4x4 and his products. Every product has been thoroughly tested and proven often under extreme conditions.

When OzRoamer wanted someone to work on the Project Pajero where they were revitalising a 10 year old Pajero as an outback tourer they



trusted Chris at Opposite Lock Narellan to do the work and prepare the Pajero for its rugged outback trips ahead.

That confidence and peace of mind came through when Project Pajero completed 6,000 km of harsh outback travel without a mishap.

Give Chris a call on (02) 4648 4650, email him at [info.narellan@oppositelock.com.au](mailto:info.narellan@oppositelock.com.au) or visit [www.oppositelock.com.au](http://www.oppositelock.com.au)

## AIR-RITE

## Products

Air-Rite specialises in custom made accessories and add ons for your slide on camper or ute body. Working in mainly aluminium and stainless steel, we can custom design all sorts of solutions for your camping needs including:

- Heavy duty under body storage boxes in both aluminium and gal, powder coated or two pack finish.
- Stainless steel & poly under tray water tanks complete with 12 volt pressure pumps.
- Sliding drawers and tables (as illustrated) made to your specifications. These storage modules can be made with or without the slide out table and sized to your individual needs.
- Rear dress bars complete with LED tail light upgrades (as illustrated). Many traybacks are left with the OEM rear bumper fitted, making the rear of the vehicle look a little unfinished and sometimes compromising the operation of

the reversing sensors. Our aluminium dress bars will finish the back end of your trayback and restore the correct function of your reversing sensors.

- Head board spoilers.
- Supply and installation of LED reversing and work lights.
- Supply and installation of camping fridge slides & drop slides.

If you are looking for something a little different, visit us in Nambour or call our Workshop Foreman Paul to discuss what we can do for you.

[www.air-rite.com.au](http://www.air-rite.com.au) Ph: (07) 5441 2866



## AUTOFRIDGE portable fridge



## Products

AUTOFRIDGE Australia Pty Ltd is an Australian owned company that is now in its 24th year. The AUTOFRIDGE project began in 1986 after a prototype portable fridge was built to test out the eutectic refrigeration principle that had been used in the marine industry for many years. The first AUTOFRIDGE portable eutectic refrigerators for 4WD applications were produced in 1987 and the product quickly gained acceptance due to its exceptional efficiency and high quality.

Today, the product is still hand built with the prime objectives being efficiency, reliability and a high standard of finish. In a conventional compressor powered refrigeration system the evaporator is mounted inside the fridge cabinet and makes everything cold when the compressor is running. When the compressor turns off, the fridge warms up. The system starts up again to bring the

temperature down. This process continues constantly and is controlled by the thermostat - all very simple and in most cases reliable. Eutectic refrigeration is simply the use of a compressor-driven refrigeration system coupled to a cold storage device, i.e. eutectic tank (sometimes called Ice bank' or Ice wall). The eutectic tank contains a liquid which is chilled and frozen during the refrigeration cycle. This mass of ice housed within the tank is capable of keeping the temperature of an insulated box at refrigeration temperatures for long periods of time without running the compressor. When the eutectic tank or ice bank has thawed, the refrigeration system is run again to re-establish the ice bank. In a properly designed eutectic system the refrigeration system only needs to be run once or twice daily with very long periods between each run. It is not necessary to have an auxiliary



battery just to run the EUTECTIC fridge. The advantage of the eutectic system is that the refrigeration unit does not need a power source on a continuous basis, whereas a conventional system must have power available at all times.

For enquiries, at E: [autofridge@bigpond.com](mailto:autofridge@bigpond.com)  
P: (02) 9316 9539 F: (02) 9316 9871  
[www.autofridge.com.au](http://www.autofridge.com.au)

## Hillbilly Camping Gear



Hillbilly Camping Gear provides Australian Made cooking equipment ideal to use anywhere from the backyard to the bush. Made from uncoated blue steel, all Hillbilly frypans, camp ovens cook stands and BBQs are made to last a lifetime of camping use with minimum maintenance required. Hillbilly camp ovens have earned a reputation as the best camp oven cooking system available.

The BushKing 12.5 litre is manufactured from spun blue steel, making this camp oven much tougher, harder wearing and easier to clean than cast iron alternatives.

The unique design makes the BushKing a most versatile fireside companion as camp oven, frypan and saucepan. To heat the camp oven you can choose to use campfire coals, Heatbeads, dry sticks or the purpose designed Hillbilly KingCooker gas conversion for maximum flexibility in use across environmental and weather conditions.

Take a look at the range of accessories available (including baking trivet, vegie roasting ring, pot stand, gas conversion, carrybag and cookbook) and you'll know it really is the most versatile camp oven system available. Check out our complete BushKing Kit packages. Dimensions: 12.5 litre, 415mm widest diameter - lid, Weight 4.6Kg

The Hillbilly Cookbook - featuring 200 easy recipes to try out with your Hillbilly Camping Gear is written specifically for the Aussie camper, it is a must have to make your bush cooking a gourmet experience. Hillbilly Camp Oven Carrybag Manufactured from a tough heavy weight canvas the carrybag keeps your camp oven and all its accessories together and easy to transport. Weight 0.8Kg Now there is also a broad range of Hillbilly products that will add even more pleasure to your outdoor living experience. These include



Billy cans, kettles, hot water boiler, BBQ grills, fireside spit, general camping accessories, etc.  
Contact us at: Hillbilly Camping Gear, 21A Kevin Avenue, Ferntree Gully, Vic, 3156.  
P: 0407 540 005 F: 03 8678 3931  
E: sales@campingwithhillbilly.com  
[www.campingwithhillbilly.com](http://www.campingwithhillbilly.com)

## Korr Lighting 3 Bar Camp Kit

Finally a new quality LED light ideal for camping, 4WDs, caravans, boats and more! These weatherproof lights provide more than enough light to see what you're doing at night. Installation is a breeze! This DIY kit comes with all the necessary cables, quick connectors and mounting hardware so you can install yourself in nearly all applications. Due to its aluminium casing and fully waterproof (IP68) LEDs, the Light Bar light is extremely tough. We back our product with a 2 year warranty. 30 day money back guarantee. You no longer need to pack the lantern/torch when camping.

Never have to cook before it gets dark. No hot elements from gas lamps. Leave them on all night and it will not affect your battery. A dimmer switch is supplied so you can turn down the brightness in the kids room. All lights are IP68 Rated, that means they will run under water.

They have a 50,000 hour life span. Power consumption being only a mere 0.5 amp per light bar means you could run this light off a normal car battery for 100 hours before the battery goes flat.

FEATURES: 2 year warranty / 1 year commercial, Waterproof (IP68), 12 volt, 7.2watt per 50cm bar, 120 deg beam angle, 50,000 hour life span, Little to no heat, Durable / impact resistant, Massive 450 lumens per 50cm Light bar, DIY install, no electrician required

3 BAR KIT CONTAINS: 3 x high power 50cm Light bars, 1 x dimmer switch "The dimmers are on/off switches as well", 1 x 10m quick connect cable with cigarette attachment, 1 x battery terminal clamps to cigarette adaptor, 2 x 1.2m cables with quick connects, 2 x 2.5m cable with quick connects 2 x splitter cables with quick connects, 6 x Velcro wraps for mounting, 6 x



magnets for mounting 6 x zip-ties for mounting, 1 x reusable container, 6 x mounting Clips  
Contact us on: (07) 3801 8332  
[www.korrlighting.com.au](http://www.korrlighting.com.au)

## GME TX685 & TX6150 Hand Held UHF CB radios

Introducing the new GME Water & Dust proof compact hand held UHF CB Radios. The GME TX685 & TX6150 are compact 3 and 5 watt UHF CB hand held radios. These Australian designed radios are built rugged and are the first water and dust proof radios available with a 24 hour battery life\* - ideal for the harsh Australian environment.

Tough enough to rinse under the tap after a muddy day on the farm or, if you're a little more adventurous, small enough to fit in a jacket pocket hiking or 4WD driving with your mates. These rugged radios are packed with a range of innovative software and hardware features in scanning and memory, signal processing and privacy, ensuring consistent reliable communications even in the most extreme conditions.

With a range of high quality accessories, these radios are even suitable for reliable

team communication within construction and maintenance, agriculture and primary industry, destination and event management. The Features:

- IP67 Water and Dust proof - Submersible up to 1 metre for a period of 30 minutes
- Built rugged - Solid die-cast chassis and operational between -20° to +60° degrees celsius
- Powerful 3 or 5 watt versions - combined with GMEs enhanced receive sensitivity and selectivity, intelligent power management and the helical wound antenna, these radios maximise transmit range and boost reception distance
- Intelligent Battery Management - powerful 2000mAh (TX685) and 2200mAh (TX6150) Lithium Ion battery packs and intelligent hardware and software design allows the

radios to operate for a minimum 24 hours on low power or 15 hours on high power\* - 50% longer than any other 5 watt UHF CB radio

- Privacy - 38 CTCSS, 104 DCS tones and Voice Inversion Scrambler for those users looking for greater privacy and less interruption

- Scanning - Open scan with user selectable channel memory and dual watch
  - Genuine 2 year GME warranty
- For more information contact GME on [www.gme.net.au](http://www.gme.net.au)



## St John Ambulance Australia



### Products

St John Ambulance Australia is a self-funding charitable organisation active in all states and territories, dedicated to helping people in sickness, distress, suffering or danger. St John is Australia's leading provider of first aid training, first aid services at public events and supplier of first aid kits and equipment. They run the ambulance services in Western Australia and Northern Territory and provide a range of community services and youth development programs. First Aid courses include CPR, Emergency First Aid, Senior First Aid, Occupational First Aid and many more. First aid courses are available across Australia. St John sells first aid kits for workplace, first aid rooms, leisure, home, motor vehicle and other uses. They provide a restock service plus a wide range of other first aid kits for specific purposes

(e.g outdoor, 4WD) and workplaces (to meet State/Territory legislative requirements). The Road First Aid Kit contains 125 quality pieces and has been designed for the car, home or 4x4. It is definitely an essential to have in the event of an emergency as containing all the basic requirements to treat most emergencies. It is ideal for storing in the back of your truck. The St John Bites and Stings First Aid Kit has been specifically designed for the treatment of bites and stings injuries from the beach to the bush. It contains a cold pack, bandages and first aid manuals. Have you ever been to a public event and been injured or felt unwell? Chances are St John volunteers have been there to help. By donating to St John, you are helping our volunteers continue their essential work in communities in NSW and beyond. There are



many ways you can support the vital work St John provides to the community. Contact St John on [www.stjohn.org.au](http://www.stjohn.org.au)



## Biji-Barbi



### Products

An Aussie invention, the Biji-Barbi is a dished BBQ plate that has three fold up legs and a practical, long, fold-up handle. Derived from the Australian plough disc/shear, the Biji-Barbi is ideal for gas burner or open fire cooking. Designed and manufactured entirely in Australia, it mirrors the character of the nation and its early pioneers. It is with pride and a sense of history therefore that we may proclaim it thus; Biji-Barbi: Rough Enough for the Bush! Simply unpack your Biji-Barbi, snap the handle and legs in place and cook up a great meal in the bush, on your deck or at the park. Just be sure you hear the 'click' when snapping the legs and handle in place to avoid having your Biji-Barbi tip over. The Biji-Barbi can be used on either a normal wood fire or by placing a suitable gas burner beneath it. It is easily cleaned and stored and is ideal for meat, eggs, fish or vegetables, making it an ideal gift for the 4WD owner or camper. In fact

anything you can cook on the home hotplate you can cook, probably better, on the Biji-Barbi. The Biji-Barbi is available with or without a centre hole for drainage of drippings. The large Biji is 430mm or 17" in diameter while the medium Biji is 350mm (14") diameter. The covers are canvas in either grey or green and fit either sized Biji-Barbi. The Flip-Grips eliminate the need for multiple cooking utensils and are designed to fest' on the flip handle securely preventing them from falling on the ground. If you're heading bush, do yourself a favour and have a look at the Biji-Barbi, get the large version, don't skimp, get the canvas cover (it lasts forever) and look forward to simple bush barbecues. Quality and presentation of the essential product as well as an innovative approach to product development are the fundamental priorities of this micro business. Contact Biji-Barbi on [www.biji-barbi.com.au](http://www.biji-barbi.com.au)



## Helton Vehicle Hot water Systems



### Products

An Australian owned family business, Helton Heat Exchangers manufacture the most compact water heating units currently available. They are small in size and big on performance. Constructed from 100% copper for maximum heat transfer, durability and corrosion resistance, Helton units can be fitted to any vehicle with a water cooled engine. With their unique internal ducting, Helton units can be mounted vertically, horizontally or at any angle between. As well as shower systems and the versatile hot water unit which are designed as continuous flow models, Helton also manufacture storage units and marine units. The available range of heat exchangers make them ideal for camping. If you want to relax at the end of the day, you will have reliable hot water for showers and washing up no matter how remote your campsite is. Our units are also great for fishing trips - so you can wash off that fishy smell or rinse off equipment.

Perhaps you would prefer to take a hot shower in the privacy of your caravan or motorhome. All units can be customised to suit individual applications. The Helton camping shower units are designed to deliver water for a hot shower direct from your vehicle. No more cold showers or waiting for water to heat over the fire. Ideal for camping, fishing, traveling and the great outdoors. Heat exchangers can be supplied as a bare unit with mounting hardware and installation instructions for DIY installers or as part of an installation kit complete with mounting hardware, heater hoses and clamps, fresh water hoses and barbs, a high quality automatic 12v pressure pump, a shower rose with hand piece on/off valve and hose and everything else you will need to set up and get hot water. Helton offers you a comprehensive pre and post purchase advisory service and a 5 year



manufacturer's warranty. For more information contact Helton on: P: (07) 4627 2477 E: [mail@helton.com.au](mailto:mail@helton.com.au) [www.helton.com.au](http://www.helton.com.au)

## ClientSAT

Client SATisfaction is critical to our success and that is why it is in our name. Our name is not about the products we sell, it is about what we deliver to our clients.

We have negotiated access with nine separate service providers and carriers, including AST Australia, TR Telecom, Iridium, Inmarsat and other Australian & International carriers. We call it being supplier agnostic.

"Our decision to recommend one solution or supplier over another will be driven by need, and that is the need of our client" *Rob Martin, MD-The Client Pty Ltd.*

ClientSAT is an Authorised Australian Government Satellite Phone Subsidy Scheme Dealer.

Registration Number D01358. The Australian Government provide subsidies to assist with the purchasing of satellite phones for use in areas where normal mobile coverage is not available.

**Eligibility** - Individuals may apply for one subsidy. Small businesses, educational institutions and community groups may apply for two subsidies. Indigenous corporations, health and emergency service organisations may apply for more than two handset subsidies. Handsets must be connected to a satellite phone sim card at the time of purchase.

**Two-tiered subsidy** - The subsidy varies according to where you live and the cost of the phone you buy. Call us to see if you qualify for a 50% or 85% Government subsidy.

**Services we provide** - Satellite phones, vehicle docking stations, vehicle and marine antennas, satellite email for laptops and tablets, satellite data modems, satellite tracking, Iridium, Inmarsat, Thuraya, Pre-paid sim cards - short or long term. Monthly line rental for your existing satellite phone at great rates, standard mobile phone numbers for your phone and FREE SMS to satellite phones.

## Products



All goods will be delivered by Australian Air Express or another nominated service where a signature will be required to accept the goods. We will attempt to dispatch your goods within two working days of our receipt of all the paperwork. If goods are unavailable for delivery you will be advised of this within one business day of your order. Contact Client SAT on 1300 368 858 or at [www.clientsat.com.au](http://www.clientsat.com.au)

## MAXTRAX Recovery Gear

Brad McCarthy, author of Dirty Weekends 'The Essential 4WD Guides', devised the idea for MAXTRAX in 2001 after a particularly stressful incident on a remote north Queensland beach where despite being equipped with all of the traditional recovery equipment, he almost lost his bogged vehicle to the incoming tide.

Brad's passion for the bush, exploration and adventure sent him out, often solo throughout Queensland, to research bush tracks and locations to feature in his guide books. MAXTRAX is the Australian designed, innovative, lightweight vehicle recovery device that's engineered and rigorously tested in the world's toughest off road events and expeditions. Is cited as the SAFE, SIMPLE, QUICK and EASY method of 4WD vehicle recovery. Measuring just 115cm long x 33cm wide, each set of MAXTRAX stacks together at a height of just 8.5cm which can be stowed away

with the rest of your day tripping, camping, or picnicking gear. Each MAXTRAX weighs a light 3.6kg so it is easy to carry and manoeuvre with minimum effort under your tyres.

The large cleats on MAXTRAX sink their teeth into the tyre tread and the terrain under your 4WD vehicle to prevent it from slipping back into mud, snow, or sand. Made of UV stabilised, flexible, super tough engineering-grade reinforced nylon, MAXTRAX provides traction and a firm base to get your vehicle quickly back on track.

You can even use it upside down as a shovel to remove excess material from around your tyres. MAXTRAX takes the drama out of getting stuck and will make vehicle recovery quicker and easier than most vehicle recovery devices on the market today.

Take the easy way out! Buy MAXTRAX now! [www.maxtrax.com.au](http://www.maxtrax.com.au)

## Products



## Bridgestone Dueler D697

Bridgestone's reputation for legendary off road toughness has been forged on some of Australia's roughest terrain - so it was natural that the new Bridgestone Dueler D697 4WD tyre would have to prove its worth under the same conditions.

Bridgestone undertook two years of testing with vehicles fitted with Dueler D697 working in unforgiving conditions such as cattle stations in the Kimberley, the infamous Gibb River Road, Flinders Ranges and Simpson Desert. Not surprisingly, the Dueler D697 passed with flying colours.

"We ran more than 400,000 kilometres of testing over that two year period and we proved that the D697 offers even better resistance to stone cuts and chips than its predecessor, the D694, while retaining all of its toughness and puncture resistance qualities," said Claudio

Sodano, Bridgestone's Group Technical Field Service Manager.

"In addition, the new tyre showed significantly better wear than the competition. So, it's not only tough but it will definitely go the distance."

Since launching the D694 in 2006 sales have almost tripled, cementing Bridgestone's position as Australia's market-leader in All Terrain (A/T) tyres.

That position is set to strengthen further, with the Dueler D697 available in a huge range of sizes.

"We have released a wide range of D697 sizes specifically targeted to suit vehicles in the Australian market," Claudio said. Bridgestone's legendary Dueler All-Terrain product range is supported by over 300 Bridgestone retail outlets Australia-wide.

## Products



For more information, find your nearest Bridgestone retail outlet by calling 131 229 or by visiting [www.bridgestone.com.au](http://www.bridgestone.com.au)

## Kizlyar Knives

## Products

Kizlyar Australia officially began operating in 2005, with its main office in North Sydney. The company's original role was to establish the Kizlyar brand of Knives in Australia and also to market the product to both retail and wholesale customers. Soon after, it was realised, that Australia was a great testing ground for our products and the feedback from the Australian clientele was found invaluable. Therefore, Kizlyar Australia started to play a much more major role in research and development of new knife models and also the improvement and upgrade of existing models. Our ability to work with major players in the Hunting and Outdoor industry in Australia, quickly raised the awareness about Kizlyar brand in Australia and in the United States. By 2009, Kizlyar was holding a solid position amongst the top production handmade knives sold in Australia and our knives can now be

purchased from almost every major hunting store throughout the country. It was early in 2010, when it was decided to broaden our product range. And so today Kizlyar Australia is the official distributor of many other superior quality brands of knives, as well as well known outdoor accessory brands. Some of these brands include, Joker Knives, Kizlyar Supreme, Olamic Cutlery, Down Under Knives, 5.11 Tactical Gear and many more. If you live in Sydney, or just happen to be in town, make sure you stop by our showroom at 168 Best Rd in Seven Hills. Previously, Kizlyar was limited to online images and info as well as stockists sparsely located around Australia, giving you the chance to see a small selection of what we fully have to offer. With our showroom now up and running, we are inviting members of the public to come in and check out for themselves some of the great products we



to offer. Check out our vast range of Knives from over 20 different brands and feel free to ask one of our helpful staff if you have any questions regarding our products. Contact Kizlyar on 1300 83 99 66 or visit [www.kizlyarknifestore.com.au](http://www.kizlyarknifestore.com.au)



## Glind Hot Water

## Products

Are you traveling, camping or fishing and need a hot water solution? Fit a Glind water heater to your vehicle and have hot OR cold water whenever you want, not only this year, but for years to come.

For the last 20 years Glind has been supplying lovers of the outdoors with the one basic home comfort most loathe to leave behind - the use of refreshing pressurized hot or cold water. The great attraction of this unit is that it is so simple to use. A heat exchanger water heater is mounted permanently in the vehicles engine bay and coupled with a pressure pump, will supply good pressure and adjustable water temperature to the user. The unit will give years of quality service, and is transferable from vehicle to vehicle. The Glind water heater gains its heat by accessing the engine coolant to heat your fresh water supply inside its small heat exchanger. The coolant and fresh water travel in separate chambers inside the

heater and as long as the engine is at operating temperature and you have fresh water in your tank, hot water is as simple as turning on the tap. In the words of well known fisherman, camping expert and journalist, Wayne Kampe : "Freed from camping grounds, I can rely upon the heat exchanger and pressure pump under the car bonnet to provide an endless source of hot water for making those camping chores easy and a hot shower at day's end is something to really look forward to."

Now with the Glind automotive heat exchanger available from \$245, why should you do without one of life's great pleasures - a good hot shower. Complete DIY kits are also with different pumps to suit different applications. Parts may vary from kit to kit.

For more information Glind can be contacted on (07) 3408 6226 or visit [www.glind.com.au](http://www.glind.com.au)



## Southern Cross Canvas



## Products

Southern Cross Canvas are manufacturers of high quality Australian made canvas goods. With an extensive range of products ranging from Tents through to Swags you are bound to find a product to suit your requirements. All Southern Cross Canvas tents are manufactured from Australian made canvas which has a high tear strength and a high water head (waterproof) with a low shrinkage factor. Along with our range of Touring tents we manufacture Family Cabin tents. These style tents are timeless classic style tents, in which even to This day are popular with families. Southern Cross Canvas roof bags are manufactured based on tried and true designs used across the country. The bags are manufactured from high-quality 12oz Australian made wax-converters canvas, in which they are all manufactured at our factory in Bayswater. The bags are all double stitched and bound,

then there are 50 mm quick release buckles placed accordingly to secure to the roof rack. The bag can be opened on three sides which enable easy access to pack and unpack the bag. Southern Cross Swags are available as custom made to your specifications and from a stocked range of single and double swag configurations. With the use of only the best Australian materials, we manufacture swags to reliably withstand all weather and terrain conditions you'll encounter across the country and so make your camping experiences the relaxing pleasure they should be.

The Dome Swags have long been considered the pinnacle swag out of those available on the market today. Manufactured using 10 oz Australian made Wax Converters canvas, a heavy duty PVC Vinyl floor and midge proof fly-wire. You can be rest assured that it will protect you from the elements and offer you a great



Sleep with plenty of ventilation where ever you may decide to spend the night in this vast country of ours. Available in either Single, Double or King you will be able to find a swag to suit your size requirements. For further details visit [www.southerncrosscanvas.com.au](http://www.southerncrosscanvas.com.au) or give their friendly staff a call on 03 9729 5056.

## Caribee Tundra Jumbo Sleeping Bag

## Products

Caribee has been producing top quality outdoor and travel gear for the Australian public for over 30 years. This experience has made them a leading supplier to the outdoor and travel industry, with many Aussies having owned a Caribee product sometime during their lifetime.

This makes them a household name and a common product sighting during your travels. Caribee's sleeping bags are not the most expensive on the market, but this does not mean they are inferior. The range that they offer provides a useful and concise selection for the Aussie traveller, whether heading our bush or jet setting around the globe. Select from their compact travel sleeping bags to their large jumbos there is a sleeping bag designed for everyone, even the kids. Their jumbo sleeping bags are head lined by the popular Tundra Jumbo that is available in both -5°C and -10°C.

Big, bold and brash (235 x 100cm size), the Tundra Jumbo is the ultimate king sized sleeping bag, boasting a fully sculptured one metre wide design and incorporating their effective Hot Foot Technology (HFT). Designed for cold climates, HFT lines the lower portion of this sleeping bag with thermal fleece for added warmth during cold nights and is great for keeping your feet warm.

Other design features include the handy "box foot" construction that provides additional room for your feet and greatly improves your sleeping comfort. This sleeping bag also features a draw cord hood, dual full length #8 zips that provides easy access in to and out of the bag and also allows the sleeping bag to be opened up like a doona, dual layer Tech-Loft Extreme synthetic fill, nylon shell, comfort cotton lining, a draft tube and collar to reduce heat loss and finally a handy internal security



Pocket. For further information on Caribee's extensive range of products, check out their website

[www.caribee.com](http://www.caribee.com)

## Projecta

## Products

PROJECTA – the name that represents Excellence in Battery Maintenance and Battery Power is today recognised as Australasia's leading brand of battery maintenance products with a particular emphasis on high quality practical commercial workshop equipment for heavy commercial and contracting vehicles. PROJECTA features a comprehensive range of products in eight categories including battery chargers, inverters, power management products, jump starters, booster cables battery terminals, battery maintenance products plus solar panels. Projecta products cater for ever expanding markets in the motor trade, transport, heavy construction equipment workshops, marine, mining and farming.

Two example products used on the recent OzRoamer Project Pajero are 12V 1000W Pure Sine Wave Inverter.

With a peak power output of an astonishing

2000W, the IP1000 is the ideal inverter for powering all your electrical needs that require ultra clean power. Ideal for permanent installation this sophisticated inverter is perfectly suited to caravans and trade requirements.

2000A 12V JUMPSTARTER AND POWER SUPPLY. A powerful 12V jumpstarter capable of starting large petrol and diesel engines often found in 4WD vehicles. Also offers a reliable source of portable 12V power for running camping lights and compressor fridges.

The 2011/2013 Projecta catalogue illustrates a range that is heralded as the most comprehensive of its type ever to be released in Australasia and contains one of the widest ranges of high quality battery products of any brand around the world. Eight categories of Projecta products are catalogued encompassing detailed product information, specifications,



application guides plus clearly presented features assisting users in applications such as the original equipment manufacture of caravans, campervans, recreation and special purpose vehicles.

Certified to ISO 9002 quality standard, the company is owned principally by the current management. Its slogan, More Switched On is strongly promoted to ensure PROJECTA products live up to customers' expectations of better products at great prices.

For further information on the extensive range visit [www.projecta.com.au](http://www.projecta.com.au)

For a copy of the latest PROJECTA catalogue email [info@projecta.com.au](mailto:info@projecta.com.au) or call 1800 113 443.

[www.projecta.com.au](http://www.projecta.com.au)

## Cooee water

## Products

Our goal is to provide fresh, clean and clear drinking water, through tailored water filter systems for your company, school or facility's individual needs. Proudly Australian owned and operated, we are local, providing five star quality in both the products and the service we provide. Water filtration is what we do best.

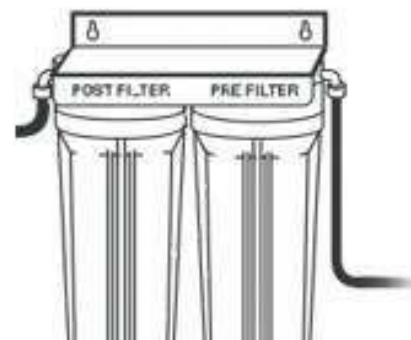
Our water filter systems connect directly to your main water supply to provide you with an endless supply of drinking water, free of chlorine, taste, odours, chemicals, heavy metals and cysts. We also offer solutions for hot, cold, and ambient temperature water filters to suit your drinking preference.

We provide and install a range of water filter systems, including stand-alone water coolers, bubblers, mains-connected water coolers and boilers, ice machines and filters. Ideal for businesses, facilities or at home, we offer

easy, affordable rental plans and professional installation on all products.

The benefits to you are: regular filter changes and sanitizing on all units, unlimited drinking water, greater hygiene on drinking systems, time saved by having instant boiling water, massive cost savings from bottled water, occupational health and safety issues fixed by no manual handlings, large variety to drinking water systems to suit all requirements. We also supply a range of in-line filters for Motorhomes, camper trailers, caravans and for all camping needs.

Contact us on [www.cooeewater.com.au](http://www.cooeewater.com.au) or call 1300 026 633.



## KORR Lighting LED Driving Lights

## Products

KORR Lighting is an industry leader in the design, manufacture and supply of LED lighting in the retail lighting industry. With over 3 decades of lighting experience, the KORR brand is Australia's market leader in LED.

KORR prides itself on delivering the highest quality LED products for the Boating, RV and Camping markets and customer service is paramount. All KORR products are designed and manufactured with the consumer in mind ensuring KORR's guarantee of quality and product guarantee.

One of the latest innovations is the 90w LED Driving light. In typical KORR fashion it is quality throughout. Made from waterproof aircraft aluminium with a shock proof casing the KORR 90 w LED driving lights have a waterproof rating of IP 68. The kit comes complete with heavy duty alloy mounting brackets and as they are 10-30v they can be mounted on 4X4s, SUVs,

Trucks, Bobcats, Camper trailers, Caravans and Agricultural machinery. They feature a Softer light to prevent glare from road signs but have enormous coverage. They are also rated to 50,000hrs usage.

Features include:

- 90w LED pair
- 8000 Lumens each
- LED Power: 90W (x2)
- Operating Voltage: 10-30V DC
- Waterproof rate: IP 68
- Vibration dampening shock absorbers
- 9pcs \*10w high intensity CREE-XML-1C/1D U3
- Current draw: 12v/7.5amp; 24v/3.75amp
- Color Temperature: 6000K
- Material: High grade aircraft aluminium
- Lens material: Polycarbonate lens
- Mounting Bracket: Stainless Steel
- Beam: Euro
- 50000 hours above life time.



- Certificates: CE RoHs IP68
- Deutsch connectors
- 2 year warranty

Contact KORR Lighting directly on [www.korrlighting.com.au](http://www.korrlighting.com.au)

## RV Towing Solutions

## Products

RV Towing Solutions are the sole importers of the Rock Tamers a fully adjustable & removable mud flap system that attaches to the standard 50mm draw bar of your vehicle. They are designed to protect caravans, camper trailers, boats, car trailers, horse floats etc. from damage caused by rocks and road debris.

The Rock Tamer comes in kit form which consists of a black powder coated forged aluminium hub and arms, stainless sleeved steel support rods, full length black rubber flaps with stainless steel trim plates. The cost of the Rock Tamer starts at \$420.00 per unit.

We have also released the Secure-A-Hitch anti rattle device. This patented device is easily fitted to all existing hollow shaft hitches with minimum fuss. We have a kit available for the solid tongue hitches as well as the complete hitch with the anti-rattle device inserted.

We are the agent for the EAZLIFT Weight Distribution Hitch and Sway Control bars. These hitches have been tested in Australia and are compliant with Australian Standards. These hitches come in 2 sizes with a range of shanks available.

We are the agent for the new McHitch Uniglide Trailer Coupling. These couplings are available for camper trailers, caravans and our outstanding value for the award winning design.

We are the agent for the Clearview Towing mirrors. The only full replacement towing mirror especially designed for towing caravans, boats and large trailers. The mirrors are available for a large range of vehicles including Toyota Landcruiser, Prado, GU Patrol, Nissan Navara/Pathfinder, Pajero etc. We developed the D.I.Y. SMART LINE, a simple do-it-yourself awning mounted clothes line for the smart caravanner. Made from marine grade stainless steel fittings and guaranteed not to rust!



This clothes line is light weight and easy to install. It can be fitted in seconds after initial 5 minute installation. The smart line is available in a wide range of sizes to suit all popular awnings and can also be made to measure for special sizes. The cost of this smart line starts at \$25.00. Contact us at [www.rvtowingsolutions.com.au](http://www.rvtowingsolutions.com.au) or call Ph: 0244 715101 Mob: 0427 868 418.

## Axis Audioxtra

## Products

Axis has expanded its range of Mobile Safety products with the introduction of its first range of plug-and-play vehicle accident recording cameras. Easy to install, configure and operate, the Axis range of DVR systems are a must for anyone as can help protect drivers from fraudulent claims and accident disputes.

Mounted on the inside of the car windscreen, the DVR systems can automatically detect any sudden changes in car movement through its G-Sensor, such as when an accident occur or when the car is parked or no driver is present, and immediately record the footage in high definition. The vehicle recorder can also loop record which continually records what is happening. This footage can then be used to provide evidence of who is at fault so that drivers can easily report incidents to police and insurance companies.

The range can also be set up to continuously capture road vision and users can playback

journeys taken. This makes the cameras ideal for recreational drivers such as 4WD enthusiasts, parents who want to monitor the safety of younger drivers or commercial fleet managers who wish to keep track of employees while on the road. The Axis range of DVR systems utilises HD Cameras, Infrared Night Vision to ensure high quality footage - even in poor light and Motion Detection which instantly triggers recording function. DVR 1092HD features: Single Camera, G-Sensor, High Resolution 1080p, 2 Inch Folding LCD, Night Vision with 8 Infrared LED, 120° Wide Angle Lens, HDMI/AV-Out Dual Video Output, Motion Detector - Cycled Recording.

DVR 2000GPS features: 5MP Single Camera, GPS Tracking, High Resolution 1080p, G-Sensor, 1.5" Inch LCD, Night Vision with Infrared LED, 132° Wide Angle Lens, HDMI/AV-Out Dual Video Output.



DVR F20S features: Dual Cameras, SOS Emergency Button, G, 720p Resolution, 2.7" Inch LCD, Night Vision with Infrared LED, 120° Wide Angle Lens, HDMI/AV Out Support, Motion Detector - Cycled Recording. Axis spans over three decades of Australian ownership & operation. AXIS is proud to continue providing intelligent technology and exciting, practical solutions for Mobile Safety. [www.audioxtra.com.au](http://www.audioxtra.com.au)

## 4x4 equip

Based in Melbourne, Australia, 4x4 Equip Pty Ltd has grown from its humble beginnings producing Axe & Shovel Holders for friends and 4x4 Club members, into a dynamic company which manufactures and supplies many unique 4x4 and camping accessories.

The combination of local design and engineering expertise and camping / 4WD driving experience ensures you end up with innovative, high quality products that are extremely functional and well suited to our harsh Australian outback conditions! The company utilises CAD and maintains a full workshop set-up to design and manufacture unique, high quality products. 4x4 Equip also retails a range of general Camping Gear and FWD Recovery Equipment. The Free Standing Light or Shower Pole and its associated accessories are a great addition to your camping gear.

The Free Standing Light or Shower Pole attaches directly to either the Ground Peg or Battery Plate giving you the flexibility to place your shower or camp light in a location that suits you, including away from your vehicle. The Wire Light Holder and the Shower Arm can be interchanged at the top of the pole as necessary giving you the option of attaching your portable shower unit one minute and lighting your camping area the next. (you can even use both on the same pole at one time if necessary).

You can also mount your Shower Pole or Light Pole directly off your vehicle or camper with the aid of either our Horizontal or Vertical Mounting Brackets. The Battery Plate can be used in conjunction with the 4x4 Equip 18Ah & 7Ah Portable Battery Packs to provide power for your light or shower too - check these products out under the Portable 12V Power section of our website.

## Products



The Clamp Wire Light Holder gives you the option of clamping your 12v light to anything rigid by the camp, on your 4WD or inside and outside your camper or caravan. So why not take a look at our products. You can buy through our Australia-wide retail network, or directly online if you can't find a retailer in your area. We look forward to hearing from you. [www.4x4equip.com.au](http://www.4x4equip.com.au)

## Ultimate Suspension

The Ultimate Suspension is not just a brand, but a statement in innovation. We have been designing, manufacturing and installing high performance suspension systems since 1975. Our products have been tried and tested in countless off road competitions, relied upon in hostile environments and trusted by recreational drivers around the world. The Ultimate Suspension manufactures fully integrated suspension systems to suit individual vehicles and applications. This ensures the suspension upgrade will achieve the desired result and is correctly suited to the vehicle. Based in Sydney, Australia, The Ultimate Suspension's dedicated team will assist you in the design and installation of a suspension system that will suit your vehicle and application. Regardless of whether you have a daily driver, weekend worrier, touring vehicle or armoured personnel carrier; The Ultimate Suspension can help. With a range of options from standard height to raised kits, comfort,

heavy duty and GVM upgrades, the Ultimate Suspension is the correct solution for your vehicle. All Ultimate Suspension products have undergone rigorous testing and are constantly being developed and improved. Onsite testing and manufacturing capabilities ensure that the Ultimate Suspension is always built to a quality standard and not a compromise. Our products are also backed by the Ultimate Warranty (2ys/ Unlimited km on Shocks and lifetime on all springs) and industry leading customer support. The entire range of Ultimate Shock absorbers are now also rebuildable which means we can service or repair shocks even outside of the warranty period. This is a cost effective solution and means the shocks are no longer a throw away item. Professional installation can be provided through our Sydney workshop or numerous recommended installers around the country. If you are not located near one of our recommended installers, Ultimate Suspension products can be supplied direct for

## Products



installation by a local mechanic. With over 35 years experience as suspension specialists, you can rely on the Ultimate Suspension. "The Ultimate Suspension system is not just about springs and shocks. It is the complete concept of safety, comfort, performance and reliability that the tailored packages provide for all of your driving requirements." - Ken O'Keefe, Bushranger Magazine 1991. [www.ultimatesuspension.com.au](http://www.ultimatesuspension.com.au)

## Workabout Australia



## Book

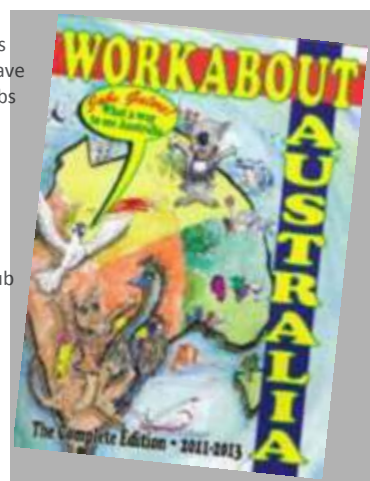
Workabout Australia is Australia's foremost online resource and planning tool for travelling workers, connecting travellers with casual, seasonal, part time and permanent work around Australia. Founded in 1996 Workabout Australia has built up a network of contacts for employment opportunities in all states and territories of Australia. The Workabout Australia Club has thousands of members who are already travelling or planning to set off on their trip of a life time, taking advantage of the many opportunities that are available for those who want to work. Travelling to Australia on a working holiday, or looking to relocate permanently? Our tips for travelling to Australia will help get you started. We also offer employers a fantastic, price effective alternative for advertising their positions vacant. For less than the cost of a single ad in the local paper our employers can list as many

jobs as they need to for 12 months with their vacancies "hand delivered" to thousands of Workabout Australia Club Members in our weekly email bulletin. As a member based organisation our primary aim at Workabout Australia is to provide tangible benefits and support to our members as they travel Australia, or go through the planning process preparing for their trip of a lifetime. Once a member of Workabout Australia you will begin receiving the weekly email bulletin we send every Friday morning containing details of any new positions that have become available that week. The bulletin also contains hints and tips, member's stories and updates on any new deals or discounts being offered to members. To ensure maximum benefit to our members the positions listed in the weekly email bulletin are not made available in the public area of the

website until ten days after they are listed. This means that Members have first access to all new jobs on the website and that they are sent out in our weekly bulletin before being made available to non-members. Membership of the Workabout Australia Club also entitles you access to the secure Members area of the website.



[www.workaboutaustralia.com](http://www.workaboutaustralia.com)



# OZROAMER BUYERS GUIDE

	DRIVETRAIN	FUEL	ENGINE	TRANSMISSION	POWER KW/RPM	TORQUE NM/RPM	TOW CAPACITY	TOW BALL RATING	TOWING ABILITY	OFF ROAD ABILITY	RATING/20
<b>Audi Q3</b>											
ANCAP 5 Star			Warranty 3 year/Unlimited km 3 year Roadside Assistance								
Q3 2.0TDI quattro	AWD	D	2.0L TDI 4	7 Sp AT	103 @ 4,200	320 @ 1,750	2,000kg	200kg	7	4	11
Q3 2.0 TFSI quattro	AWD	P	2.0L TSFI 4	7 Sp A	125 @ 4,300	280 @ 1,700	2,000kg	200kg	7	4	11
Q5 2.0 TFSI quattro	AWD	P	2.0L TSFI 4	7 Sp AT	155 @ 5,000	300 @ 1,800	2,000kg	200kg	7	4	11
<b>Audi Q5</b>											
ANCAP 5 Star			Warranty 3 year/Unlimited km 3 year Roadside Assistance								
Q5 2.0 TDI quattro	AWD	D	2.0L TDI 4	7 Sp AT	130 @ 4,200	380 @ 1,750	2,000kg	200kg	7	4	11
Q5 2.0 TFSI quattro	AWD	P	2.0L TSFI 4	8 Sp AT	165 @ 4,500	350 @ 1,500	2,000kg	200kg	7	4	11
Q5 3.0 TDI quattro	AWD	D	3.0L TDI V6	7 Sp AT	180 @ 4,000	580 @ 1,400	2,000kg	200kg	7	4	11
<b>Audi Q7</b>											
ANCAP 4 Star			Warranty 3 year/Unlimited km 3 year Roadside Assistance								
Q7 3.0 TDI quattro	AWD	D	3.0L TDI 6	8 Sp AT	180 @ 3,800	550 @ 1,750	3,200kg	300kg	8	4	12
Q7 3.0 TFSI quattro	AWD	P	3.0L TFSI 6	8 Sp AT	245 @ 5,500	440 @ 2,900	3,200kg	300kg	8	4	12
Q7 4.2 TDI quattro	AWD	D	4.2L TDI V8	8 Sp AT	250 @ 4,000	800 @ 1,750	3,500kg	300kg	8	4	12
<b>BMW X1</b>											
ANCAP 5 Star			Warranty 3 year/Unlimited km 3 year Roadside Assistance								
X1 xDrive20d	AWD	D	2.0d 4	6 Sp MT	135 @ 4,000	380 @ 1,750	2,000kg	200kg	7	4	11
X1 xDrive28i	AWD	P	2.8i 4	6 Sp MT	180 @ 5,000	350 @ 1,250	2,000kg	200kg	7	4	11
<b>BMW X3</b>											
ANCAP 5 Star			Warranty 3 year/Unlimited km 3 year Roadside Assistance								
X3 xDrive 20d	AWD	D	2.0d 4	8 Sp AT	135 @ 4,000	380 @ 1,750	2,000kg	200kg	7	4	11
X3 xDrive 20i	AWD	P	2.0i 4	8 Sp AT	135 @ 5,000	270 @ 1,250	2,000kg	200kg	7	4	11
X3 xDrive 28i	AWD	P	2.0i 4	8 Sp AT	180 @ 5,000	350 @ 1,250	2,000kg	200kg	7	4	11
X3 xDrive 30d	AWD	D	3.0d 6	8 Sp AT	190 @ 4,000	560 @ 1,500	2,000kg	200kg	7	4	11
<b>BMW X5</b>											
ANCAP 5 Star			Warranty 3 year/Unlimited km 3 year Roadside Assistance								
X5 xDrive 30d	AWD	D	3.0d 6	8 Sp AT	190 @ 4,000	560 @ 1,500	2,700kg	270kg	8	5	13
X5 xDrive 35i	AWD	P	3.0i 6	8 Sp AT	225 @ 5,800	400 @ 1,200	2,700kg	270kg	8	5	13
X5 xDrive 40d Sport	AWD	D	3.0d 6	8 Sp AT	230 @ 4,000	630 @ 1,500	2,700kg	270kg	8	5	13
X5 xDrive M50d	AWD	P	3.0d 6	8 Sp AT	280 @ 4,000	740 @ 2,000	2,700kg	270kg	8	5	13
<b>Ford Kuga</b>											
ANCAP 5 Star			Warranty 3 year/Unlimited km 3 year Roadside Assistance								
Kuga TF Titanium	AWD	D	2.0DT 4	6 Sp AT	120 @ 4,000	340 @ 1,750	1,500kg	150kg	6	4	10
<b>Ford SZ Territory</b>											
ANCAP 5 Star			Warranty 3 year/100,000 km 1 year Roadside Assistance								
Territory Titanium AWD	AWD	D	2.7L V6 CRD	6 Sp AT	140 @ 4,000	440 @ 1,900	2,700kg	270kg	8	6	14
<b>Ford Ranger Ute</b>											
ANCAP 5 Star			Warranty 3 year/100,000 km 1 year Roadside Assistance								
Ranger XL 4x4 CC	4WD	D	2.2L TD 4	6 Sp MT	110 @ 3,700	375 @ 1,500	3,500KG	350Kg	10	10	20
Ranger Wildtrak 4x4 CC	4WD	D	3.2L TD 5	6 Sp AT	147 @ 3,000	470 @ 1,500	3,500KG	350Kg	10	10	20
<b>Ford F250</b>											
ANCAP N/A			Warranty 3 year/100,000 km 3 year Roadside Assistance								
Ford F250 Superduty	4WD	D	6.7L V8	6 Sp AT	302 @ 2,800	1085 @ 1,600	6,500Kg	600Kg	10	10	20
<b>Foton Tunland</b>											
ANCAP 3 Star			Warranty 3 year/100,000 km								
Tunland Dual Cab	4WD	D	2.8L TD 4	5 SP MT	120 @ 3,600	360 @ 1,800	2,500kg	250kg	7	7	14

# OZROAMER BUYERS GUIDE

	DRIVE TRAIN	FUEL	ENGINE	TRANSMISSION	POWER KW/RPM	TORQUE NM/RPM	TOW CAPACITY	TOW BALL RATING	TOWING ABILITY	OFF ROAD ABILITY	RATING/20
Great Wall											
			ANCAP 2 Star			Warranty 3 year/100,000 km 3 year Roadside Assistance					
V240 K2 Utility	4WD	P	2.4L 4	5 SP MT	100 @ 5,250	200 @ 3,000	2,000kg	200kg	6	6	12
X240	4WD	P	2.4L 4	5 SP MT	100 @ 5,250	200 @ 3,000	1,700kg	170kg	5	5	10
Holden Captiva											
			ANCAP 5 Star			Warranty 3 year/100,000 km 1 year Roadside Assistance					
Captiva 5 LTZ	AWD	D	2.2L CRD 4	6 Sp AT	135 @ 3,800	400 @ 2,000	1,700kg	N/S	6	5	11
Captiva 7 LX	AWD	D	2.2L CRD 4	6 Sp AT	135 @ 3,800	400 @ 2,000	1,700kg	N/S	6	5	11
Holden Colorado7											
			ANCAP 5 Star			Warranty 3 year/Unlimited km 3 year Roadside Assistance					
Colorado7 LTZ	4WD	D	2.8L CRD 4	6 Sp AT	147 @ 3,600	500 @ 2,000	3,000kg	300kg	9	9	18
Holden Colorado											
			ANCAP 5 Star			Warranty 3 year/Unlimited km 3 year Roadside Assistance					
Colorado 4X4 CC LTZ	4WD	D	2.8L CRD 4	6 Sp AT	147 @ 3,600	500 @ 2,000	3,500kg	350kg	10	10	20
Honda CRV											
			ANCAP 5 Star			Warranty 3 year/100,000 km					
CRV VTi-L	AWD	P	2.4L 4	5 Sp AT	140 @ 7,000	222 @ 4,400	1,500kg	100kg	5	4	9
Hyundai ix35											
			ANCAP 5 Star			Warranty 5 year/Unlimited km 1 year Roadside Assistance					
ix35 2.4 Elite	AWD	P	2.4L 4	6 Sp AT	136 @ 6,000	240 @ 4,000	1,600kg	140kg	6	6	12
ix35 2.2 Highlander	AWD	D	2.0 CRDi 4	6 Sp AT	135 @ 4,000	392 @ 1,800	1,600kg	140kg	6	6	12
Hyundai Sante Fe											
			ANCAP 5 Star			Warranty 5 year/Unlimited km 1 year Roadside Assistance					
Santa Fe GDI Active	AWD	P	2.4L GDI 4	6 Sp MT	141 @ 6,300	242 @ 4,250	2,500kg	100kg	6	7	13
Santa Fe Elite	AWD	D	2.2L CRDi 4	6 Sp MT	145 @ 3,800	421 @ 1,800	2,500kg	100kg	6	7	13
Santa Fe Highlander	AWD	D	2.2L CRDi 4	6 Sp AT	145 @ 3,800	436 @ 1,800	2,000kg	100kg	5	7	12
Isuzu MU-X											
			ANCAP 4 Star			Warranty 3 year/100,000 km Year Roadside Assistance					
MU-X LS-M	AWD	D	3.0L CRD 4	5 Sp AT	130 @ 3,600	380 @ 1,800	3,000kg	300kg	9	9	18
Isuzu											
			ANCAP 4 Star			Warranty 3 year/100,000 km Year Roadside Assistance					
D Max LS	4WD	D	3.0L CRD 4	5 Sp MT	130 @ 3,600	380 @ 1,800	3,000kg	300kg	9	10	19
D Max LS-U	4WD	D	3.0L CRD 4	5 Sp AT	130 @ 3,600	380 @ 1,800	3,000kg	300kg	9	10	19
Jeep Patriot											
			ANCAP N/A			Warranty 3 year/100,000 km 3 year Roadside Assistance					
Patriot Limited	4WD	P	2.4L 4	6 Sp AT	125 @ 6,000	220 @ 4,500	1,500KG	150KG	6	6	12
Jeep Wrangler											
			ANCAP 4 Star			Warranty 3 year/100,000 km 3 year Roadside Assistance					
Wrangler Sport	4WD	P	3.8L V6	5 Sp AT	209 @ 6,350	347 @ 4,300	2,200kg	220kg	7	9	16
Wrangler Sport Diesel	4WD	D	2.8L CRD 4	6 Sp MT	147 @ 3,600	410 @ 2,200	2,300kg	230kg	7	9	16
Wrangler Rubicon	4WD	P	3.8L V6	6 Sp MT	209 @ 6,350	347 @ 4,300	2,300kg	230kg	7	10	17
Jeep Wrangler Unlimited											
			ANCAP 4 Star			Warranty 3 year/100,000 km 3 year Roadside Assistance					
Wrangler Unlimited Sport	4WD	P	3.8L V6	5 Sp AT	209 @ 6,350	347 @ 4,300	2,200kg	220kg	7	9	16
Wrangler Unlimited Sport Diesel	4WD	D	2.8L CRD 4	6 Sp MT	147 @ 3,600	410 @ 2,200	2,300kg	230kg	7	9	16
Wrangler Unlimited Rubicon	4WD	P	3.8L V6	6 Sp MT	209 @ 6,350	347 @ 4,300	2,300kg	230kg	7	10	17

# OZROAMER BUYERS GUIDE

	DRIVE TRAIN	FUEL	ENGINE	TRANSMISSION	POWER KW/RPM	TORQUE NM/RPM	TOW CAPACITY	TOW BALL RATING	TOWING ABILITY	OFF ROAD ABILITY	RATING/20
Jeep Cherokee											
			ANCAP 5 Star			Warranty 3 year/100,000 km 3 year Roadside Assistance					
Cherokee Sport	4WD	P	2.4L I-4	9 SP AT	137 @ 6,200	232 @ 4,800	2,041kg	200kg	7	8	15
Cherokee Limited	4WD	P	3.2L V6	9 SP AT	199 @ 6,500	460 @ 1,600	2,041kg	200kg	7	8	15
Jeep Grand Cherokee											
P		ANCAP 4 Star			Warranty 3 year/100,000 km 3 year Roadside Assistance						
Grand Cherokee Laredo	4WD	P	3.6L V6	5 Sp AT	210 @ 6,350	347 @ 4,300	2,812Kg	281kg	8	9	17
Grand Cherokee Overland	4WD	D	3.0L CRD 4	5 Sp AT	184 @ 4,000	570 @ 1,800	3,500kg	350kg	10	9	19
KIA Sportage											
			ANCAP 5 Star			Warranty 5 year/Unlimited km					
Sportage SLI	AWD	P	2.0L 4	6 Sp AT	122 @ 6,200	197 @ 4,600	1,600kg	200kg	7	6	13
Sportage Platinum	AWD	D	2.0L CRDi 4	6 Sp AT	135 @ 4,000	392 @ 1,800	1,600kg	200kg	7	6	13
KIA Sorento											
			ANCAP 5 Star			Warranty 5 year/Unlimited km					
Sorento SLI	AWD	D	2.2L CRDi 4	6 Sp MT	145 @ 3,800	422 @ 1,800	2,500kg	120kg	6	7	13
Sorento Platinum	AWD	D	2.2L CRDi 4	6 Sp AT	145 @ 3,800	436 @ 1,800	2,000kg	120kg	6	7	13
Land Rover Freelander 2											
			ANCAP 5 Star			Warranty 3 year/100,000 km 3 year Roadside Assistance					
Freelander 2 TD4	AWD	D	2.2L TD 4	6 Sp MT	110 @ 4,000	420 @ 1,750	2,000kg	200kg	7	7	14
Freelander 2 XS	AWD	P	2.0 Si4	6 Sp AT	177 @ 5,500	340 @ 1,750	2,000kg	200kg	7	7	14
Freelander 2 HSE	AWD	D	2.2L DT 4	6 Sp AT	140 @ 5,500	420 @ 1,750	2,000kg	200kg	7	7	14
Land Rover Defender											
			ANCAP N/A			Warranty 3 year/100,000 km 3 year Roadside Assistance					
Defender 90	4WD	D	2.2L DT 4	6 Sp MT	90 @ 3,500	360 @ 2,000	3,500kg	250kg	8	10	18
Defender 110	4WD	D	2.2L DT 4	6 Sp MT	90 @ 3,500	360 @ 2,000	3,500kg	250kg	8	10	18
Land Rover Discovery 4											
			ANCAP 4 Star			Warranty 3 year/100,000 km 3 year Roadside Assistance					
Discovery 4 TDV6	4WD	D	3.0L TD V6	8 Sp AT	155 @ 4,000	520 @ 2,000	3,500kg	350kg	10	10	20
Discovery 4 V8	4WD	P	5.0L V8	6 Sp AT	276 @ 6,500	510 @ 3,500	3,500kg	350kg	10	10	20
Lexus RX											
			ANCAP 5 Star			Warranty 4 year / 100,000 km 4 year Roadside Assistance					
RX 350 Sport Luxury	AWD	P	3.5L V6	6 Sp AT	204 @ 6,200	346 @ 4,700	1,400kg	140kg	6	3	9
RX 450h Sport Luxury	AWD	P	3.6L V6 Hyb	CVT Auto	183 @ 6,000	317 @ 4,800	1,500kg	150kg	6	3	9
Lexus LX											
			ANCAP 4 Star			Warranty 4 year / 100,000 km 4 year Roadside Assistance					
LX 570 Sport Luxury	4WD	P	5.7L V8	6 Sp AT	270 @ 5,600	530 @ 3,200	3,500kg	350kg	10	10	20
Mahindra											
			ANCAP 3 Star			Warranty 3 year/100,000 km 3 year Roadside Assistance					
PIK UP S5	4WD	D	2.2DT4	5 SP MT	89 @ 4,000	270 @ 2800	2,500kg	250kg	7	6	13
XUV 500	4WD	D	2.2DT4	5 SP MT	104 @ 3,750	380 @ 2,800	2,500kg	250kg	7	6	13
Mazda CX5											
			ANCAP 5 Star			Warranty 3 year/100,000 km					
CX5 Maxx Sport	AWD	P	2.0L 4	6 Sp AT	114 @ 6,000	200 @ 4,000	1,800kg	150kg	7	6	13
CX5 Grand Touring	AWD	P	2.5L 4	6 Sp AT	138 @ 5,700	250 @ 4,000	1,800kg	150kg	7	6	13
CX5 Grand Touring	AWD	D	2.2L D 4	6 Sp AT	129 @ 4,500	420 @ 2,000	1,800kg	150kg	7	6	13

# OZROAMER BUYERS GUIDE

	DRIVE TRAIN	FUEL	ENGINE	TRANSMISSION	POWER KW/RPM	TORQUE NM/RPM	TOW CAPACITY	TOW BALL RATING	TOWING ABILITY	OFF ROAD ABILITY	RATING/20
Mazda BT-50											
ANCAP 5 Star			Warranty 3 year/100,000 km								
BT-50 XT	4WD	D	3.0L DT 4	6 Sp MT	147 @ 3,000	470 @ 1,750	3,500kg	350kg	10	10	20
BT-50 GT	4WD	D	3.0L DT 4	6 Sp AT	147 @ 3,000	470 @ 1,750	3,500kg	350kg	10	10	20
Mercedes Benz ML											
ANCAP 5 Star			Warranty 3 year/Unlimited km 3 year Roadside Assistance								
ML 250 BlueTEC	AWD	D	2.1L CDi 4	7 Sp AT	150 @ 4,200	500 @ 1,400	3,500kg	225kg	7	7	14
ML 350 BlueTEC	AWD	D	3.5L V6	7 Sp AT	190 @ 3,600	620 @ 1,600	3,500kg	225kg	7	7	14
ML 500	AWD	P	5.5L V8	7 Sp AT	300 @ 6,000	600 @ 2,800	3,500kg	225kg	7	7	14
Mercedes Benz GL											
ANCAP 5 Star			Warranty 3 year/Unlimited km 3 year Roadside Assistance								
GL 350 BlueTEC	4WD	D	3.0L CDi V6	7 Sp AT	190 @ 3,600	620 @ 1,600	3,500kg	273kg	8	8	16
GL 500 Blue Efficiency	4WD	P	5.5L V8	7 Sp AT	320 @ 5,200	700 @ 1,800	3,500kg	273kg	8	8	16
Mercedes Benz G											
ANCAP N/A			Warranty 3 year/Unlimited km 3 year Roadside Assistance								
G 350 BlueTEC	4WD	D	3.0L V6	7 Sp AT	155 @ 3,400	540 @ 1,600	2,850kg	285kg	7	8	15
G 63 AMG	4WD	P	5.5L V8	5 Sp AT	400 @ 5,500	700 @ 2,000	3,500kg	350kg	10	8	18
MINI Countryman											
ANCAP 5 Star			Warranty 3 year/Unlimited km 3 year Roadside Assistance								
Cooper D ALL4 Countryman	AWD	D	2.0L 4	6 Sp MT	105 @ 4,000	305 @ 1,750	1,000Kg	100Kg	5	4	9
Mitsubishi ASX											
ANCAP 5 Star			Warranty 5 year/ 100,000 km 5Year Roadside Assistance								
ASX 4WD Aspire	AWD	D	2.2L TD 4	6 Sp MT	110 @ 4,000	300 @ 2,000	1,400kg	140kg	5	5	10
ASX 4WD Aspire	AWD	P	2.0L 4	CVT Auto	110 @ 6,000	197 @ 4,200	1,300kg	130kg	5	5	10
Mitsubishi Outlander											
ANCAP 5 Star			Warranty 5 year/ 100,000 km 5Year Roadside Assistance								
Outlander LS	AWD	D	2.2L 4	6 Sp AT	110 @ 3,500	360 @ 1,500	2,000kg	200kg	7	6	13
Outlander VRX	AWD	P	2.4L 4	CVT Auto	124 @ 6,000	220 @ 4,200	1,600kg	160kg	6	6	12
Mitsubishi Challenger											
ANCAP 4 Star			Warranty 5 year/ 100,000 km 5Year Roadside Assistance								
Challenger	4WD	D	2.5L DiD 4	5 Sp MT	131 @ 4,000	400 @ 2,000	3,000kg	300kg	9	10	19
Challenger LS	4WD	D	2.5L DiD 4	5 Sp AT	131 @ 4,000	350 @ 1,800	3,000kg	300kg	9	10	19
Mitsubishi Pajero											
ANCAP 5 Star			Warranty 5 year/ 100,000 km 5Year Roadside Assistance								
Pajero GLS	4WD	D	3.2L DiD 4	5 Sp MT	147 @ 3,800	441 @ 2,000	3,000kg	250kg	8	10	18
Pajero Exceed	4WD	D	3.2L DiD 4	5 Sp AT	147 @ 3,800	441 @ 2,000	3,000kg	250kg	8	10	18
Mitsubishi Triton											
ANCAP 4 Star			Warranty 5 year/ 100,000 km 5Year Roadside Assistance								
Triton GLX	4WD	D	2.5L DiD 4	5 Sp MT	131 @ 4,000	400 @ 2,000	3,000kg	300kg	9	10	19
Triton GLXR	4WD	D	2.5L DiD 4	5 Sp AT	131 @ 4,000	350 @ 1,800	3,000kg	300kg	9	10	19
Nissan Pathfinder*											
ANCAP 5 Star			Warranty 3 year/100,000 km 3 year Roadside Assistance								
Pathfinder STL	4WD	D	3.5L V6	CVT Auto	190 @ 6,400	325 @ 4,400	2,700kg	200kg	6	7	13
Nissan X-Trail*											
ANCAP 4 Star			Warranty 3 year/100,000 km 3 year Roadside Assistance								
X-Trail STL	4WD	P	2.5L 4	6 Sp MT	125 @ 6,000	226 @ 4,400	2,000kg	200kg	6	6	12

# OZROAMER BUYERS GUIDE

	DRIVE TRAIN	FUEL	ENGINE	TRANSMISSION	POWER KW/RPM	TORQUE NM/RPM	TOW CAPACITY	TOW BALL RATING	TOWING ABILITY	OFF ROAD ABILITY	RATING/20
X-Trail TL	4WD	D	2.0L TD 4	6 Sp AT	127 @ 3,750	360 @ 2,000	1,350kg	200kg	5	6	11
Nissan Patrol*			ANCAP 5 Star		Warranty 3 year/100,000 km 3 year Roadside Assistance						
Patrol TI	4WD	P	5.5L V8	7 Sp AT	298 @ 5,800	560 @ 4,000	3,500kg	350kg	9	10	19
Nissan Patrol Cab Chassis*			ANCAP 3 Star		Warranty 3 year/100,000 km 3 year Roadside Assistance						
Patrol Cab Chassis ST	4WD	D	3.0L TD 4	5 Sp MT	118 @ 3,400	380 @ 2,000	3,200kg	320kg	8	10	18
Nissan Navara*			ANCAP 5 Star		Warranty 3 year/100,000 km 3 year Roadside Assistance						
Navara ST	4WD	D	2.5L 4	6 Sp MT	140 @ 4,000	430 @ 2,000	2,000kg	200kg	7	9	16
Navara ST-X 550	4WD	D	3.0L V6	7 Sp AT	170 @ 3,750	550 @ 1,750	3,000kg	300kg	8	9	17
Peugeot 4007			ANCAP N/A		Warranty 3 year/100,000 km 3 year Roadside Assistance						
4007 HDI	AWD	D	2.2L TD 4	6 Sp DSG	115 @ 4,000	380 @ 2,000	2,000kg	160kg	6	6	12
Porsche Cayenne			ANCAP N/A		Warranty 3 year/Unlimited km 3 year Roadside Assistance						
Cayenne	4WD	P	3.6L V6	8 Sp AT	220 @ 6,300	400 @ 3,000	3,500kg	N/S	8	8	16
Cayenne Diesel	4WD	D	3.0L TD 6	8 Sp AT	180 @ 4,000	550 @ 2,000	3,500kg	N/S	8	8	16
Cayenne GTS	4WD	P	4.8L V8	8 Sp AT	309 @ 6,500	515 @ 3,500	3,500kg	N/S	8	8	16
Range Rover Sport			ANCAP 5 Star		Warranty 3 year/100,000 km 3 year Roadside Assistance						
Sport SDV6	4WD	D	3.0L TD V6	8 Sp AT	215 @ 4,000	600 @ 2,000	3,500kg	350kg	10	8	18
Sport V8 Luxury	4WD	P	5.0L V8	8 Sp AT	276 @ 6,500	510 @ 3,500	3,500kg	350kg	10	8	18
Range Rover Vogue			ANCAP 5 Star		Warranty 3 year/100,000 km 3 year Roadside Assistance						
Vogue SDV8	4WD	D	4.4L V8	8 Sp AT	230 @ 4,000	700 @ 3,000	3,500kg	350kg	10	10	20
Vogue V8	4WD	P	5.0L V8	8 Sp AT	375 @ 6,500	625 @ 5,500	3,500kg	350kg	10	10	20
Renault Koleos			ANCAP 5 Star		Warranty 5 year/Unlimited km 5Year Roadside Assistance						
Koleos Privilege	AWD	P	2.5L 4	CVT Auto	126 @ 6,000	226 @ 4,400	2,000kg	200kg	7	6	13
Skoda Yeti			ANCAP 4 Star		Warranty 3 year/Unlimited km 3 year Roadside Assistance						
Yeti 4x4	AWD	D	2.0L	6 Sp DSG	103 @ 4,200	320 @ 2,500	1,600kg	100kg	4	6	10
Skoda Octavia Scout			ANCAP 4 Star		Warranty 3 year/Unlimited km 3 year Roadside Assistance						
Octavia Scout	AWD	D	2.0L TD 4	6 Sp MT	103 @ 4,200	320 @ 2,500	1,600kg	75kg	4	6	10
Ssangyong Actyon Sport			ANCAP 4 Star		Warranty 5 year/ 100,000 km 5Year Roadside Assistance						
Actyon Sport Ute SX	4WD	D	2.0L TD 4 Cyl	6 Sp AT	114 @ 3,400	360 @ 2,800	2,300kg	230kg	7	7	14
Ssangyong Korando			ANCAP N/A		Warranty 5 year/ 100,000 km 5Year Roadside Assistance						
Korando SX	AWD	D	2.0L DT 4	6 Sp AT	129 @ 4,000	360 @ 3,000	2,000kg	203kg	6	6	12
Subaru XV			ANCAP 5 Star		Warranty 3 year/Unlimited km 3 year Roadside Assistance						
XV 2.0i-S	AWD	P	2.0L H 4	CVT Auto	110 @ 6,200	196 @ 4,200	1,400kg	140kg	6	5	11
Subaru Forester			ANCAP 5 Star		Warranty 3 year/Unlimited km 3 year Roadside Assistance						

# OZROAMER BUYERS GUIDE

	DRIVE TRAIN	FUEL	ENGINE	TRANSMISSION	POWER KW/RPM	TORQUE NM/RPM	TOW CAPACITY	TOW BALL RATING	TOWING ABILITY	OFF ROAD ABILITY	RATING/20
Forester XT	AWD	P	2.5L TH 4	CVT Auto	177 @ 5,600	350 @ 1,600	1,500kg	150kg	6	7	13
Forester 2.5i-L	AWD	P	2.5L TH 4	CVT Auto	126 @ 5,800	235 @ 4,100	1,800kg	180kg	6	7	13
Forester 2.0 D	AWD	D	2.0L TDH 4	6 Sp MT	108 @ 3,600	350 @ 1,600	1,800kg	180kg	6	7	13
Subaru Outback		ANCAP 5 Star			Warranty 3 year/Unlimited km 3 year Roadside Assistance						
Outback 2.5i Premium	AWD	P	2.5L H 4	CVT Auto	127 @ 5,600	235 @ 4,100	1,500kg	150kg	6	6	12
Outback 3.6 R Premium	AWD	P	3.6L H 6	5 Sp AT	191 @ 5,600	350 @ 4,400	1,800kg	180kg	7	6	13
Outback 2.0 Diesel	AWD	D	2.0L TDH 4	CVT Auto	110 @ 3,600	350 @ 1,800	1,700kg	170kg	7	6	13
Suzuki Jimny Sierra		ANCAP N/A			Warranty 3 year/100,000 km						
Jimny Sierra	4WD	P	1.3L 4 Cyl	5 Sp MT	62 @ 6,000	110 @ 4,100	1,300kg	75kg	4	9	13
Jimny Sierra	4WD	P	1.3L 4 Cyl	4 Sp AT	62 @ 6,000	110 @ 4,100	1,300kg	75kg	4	9	13
Suzuki Grand Vitara		ANCAP 4 Star			Warranty 3 year/100,000 km						
Grand Vitara 3 door	4WD	P	2.4L 4	5 Sp MT	122 @ 6,000	225 @ 4,000	1,600kg	130kg	5	9	14
Grand Vitara Sport	4WD	P	2.4L 4	5 Sp MT	122 @ 6,000	225 @ 4,000	1,850kg	150kg	6	8	14
Grand Vitara Diesel	4WD	D	1.9L TD 4	5 Sp MT	95 @ 3,750	300 @ 2,000	2,000kg	150kg	6	8	14
Tata Xenon		ANCAP N/A			Warranty 3 year/100,000 km 3 year Roadside Assistance						
Xenon Premium	4WD	D	2.2DT 4	5 Sp MT	103 @ 4,000	320 @ 2,700	2,500kg	250kg	7	7	14
Toyota Rav 4		ANCAP 5 Star			Warranty 3 year/100,000 km 3 year Roadside Assistance						
Rav 4 Cruiser	AWD	D	2.2L 4	6 Sp AT	110 @ 3,600	340 @ 2,000	1,000kg	100kg	4	6	10
Rav 4 Cruiser L	AWD	P	3.0L 4	6 Sp AT	132 @ 6,000	223 @ 4,100	1,500kg	150kg	6	6	12
Toyota FJ Cruiser		ANCAP N/A			Warranty 3 year/100,000 km 3 year Roadside Assistance						
FJ Cruiser	4WD	P	4.0L V6	5 Sp AT	200 @ 5,600	380 @ 4,400	2,250kg	225kg	7	10	17
Toyota Kluger		ANCAP 5 Star			Warranty 3 year/100,000 km 3 year Roadside Assistance						
Kluger Grande	AWD	P	3.5L V6	5 Sp AT	201 @ 2,600	337 @ 4,700	2,000kg	200kg	7	6	13
Toyota Prado		ANCAP 5 Star			Warranty 3 year/100,000 km 3 year Roadside Assistance						
Prado GXL	4WD	P	4.0L V6	5 Sp AT	202 @ 5,600	381 @ 4,400	2,500kg	250kg	7	10	17
Prado Kakadu	4WD	D	3.0L DiD 4	5 Sp AT	127 @ 3,400	410 @ 1,600	2,500kg	250kg	7	10	17
Toyota Landcruiser 200		ANCAP 5 Star			Warranty 3 year/100,000 km 3 year Roadside Assistance						
Landcruiser 200 GXL	4WD	P	4.7L V8	6 Sp AT	227 @ 5,500	439 @ 3,400	3,500kg	350kg	10	10	20
Landcruiser 200 Sahara 4WD	4WD	D	4.5L DiD V8	6 Sp AT	195 @ 3,400	650 @ 2,600	3,500kg	350kg	10	10	20
Toyota Hilux		ANCAP 4 Star			Warranty 3 year/100,000 km 3 year Roadside Assistance						
Hilux SR5	4WD	D	3.0L TD 4	5 Sp AT	126 @ 3,600	343 @ 3,400	2,500kg	250kg	7	8	15
Hilux SR	4WD	P	4.0L V6	5 Sp AT	175 @ 5,200	376 @ 4,800	2,500kg	250kg	7	8	15
Toyota Landcruiser 70		ANCAP 3 Star			Warranty 3 year/100,000 km 3 year Roadside Assistance						
70 GXL Dual CC	4WD	D	4.5L TD V8	5 Sp MT	151 @ 3,400	430 @ 3,200	3,500kg	350kg	10	10	20
70 GXL Wagon	4WD	D	4.5L TD V8	5 Sp MT	151 @ 3,400	430 @ 3,200	3,500kg	350kg	10	10	20

# OZROAMER BUYERS GUIDE

	DRIVE TRAIN	FUEL	ENGINE	TRANSMISSION	POWER KW/RPM	TORQUE NM/RPM	TOW CAPACITY	TOW BALL RATING	TOWING ABILITY	OFF ROAD ABILITY	RATING/20
Volkswagen Tiguan											
			ANCAP 5 Star			Warranty 3 year/Unlimited km 3 year Roadside Assistance					
Tiguan 103 TDi	AWD	D	2.0L TD 4	6 Sp MT	103 @ 4,200	320 @ 2,500	2,000kg	100kg	4	5	9
Tiguan 132 Tsi	AWD	P	2.0L TSi 4	6 Sp AT	132 @ 4,300	280 @ 1,700	2,000kg	100kg	4	5	9
Volkswagen Amarok											
			ANCAP 5 Star			Warranty 3 year/Unlimited km 3 year Roadside Assistance					
Amarok Trendline	AWD	D	2.0L TDi 4	6 Sp MT	132 @ 4,000	400 @ 2,500	3,000kg	300kg	7	6	13
Volkswagen Touareg											
			ANCAP 5 Star			Warranty 3 year/Unlimited km 3 year Roadside Assistance					
Touareg 150	AWD	D	3.0L V6	8 Sp AT	150 @ 4,000	400 @ 2,000	3,500kg	N/S	7	6	13
Volvo XC60											
			ANCAP 5 Star			Warranty 3 year/Unlimited km 3 year Roadside Assistance					
XC60 T5	AWD	P	2.0L T 4	6 Sp DSG	177 @ 5,500	320 @ 5,000	1,800kg	150kg	6	6	12
XC60 D5	AWD	D	2.4L TD 5	6 Sp AT	158 @ 4,000	440 @ 1,500	2,000kg	150kg	6	6	12
XC60 T6	AWD	P	3.0L T 6	6 Sp AT	224 @ 5,600	440 @ 4,800	2,000kg	150kg	6	6	12
Volvo XC70											
			ANCAP 5 Star			Warranty 3 year/Unlimited km 3 year Roadside Assistance					
XC70 3.0	AWD	P	3.0L T 6	6 Sp AT	224 @ 5,600	320 @ 3,200	2,000kg	150kg	6	6	12
XC70 D5	AWD	D	2.4L TD 5	6 Sp AT	158 @ 4,000	440 @ 1,500	2,100kg	150kg	6	6	12
Volvo XC90											
			ANCAP 5 Star			Warranty 3 year/Unlimited km 3 year Roadside Assistance					
XC90 3.2	AWD	P	3.2L T 6	6 Sp AT	179 @ 6,400	320 @ 3,200	2,250kg	180Kg	6	6	12
XC90 D5	AWD	D	2.4L TD 5	6 Sp AT	147 @ 3,900	420 @ 1,900	2,250kg	180Kg	6	6	12

## Notes

4WD is where the vehicle has a dual range transfer case i.e. high and low range. AWD is where the vehicle had a single range

We obviously have not covered every 4WD or AWD SUV however have selected models that show the range

If the only difference between models is cosmetic we have only rated one model in the range

All information is believed to be correct at the time of printing. However you should make your own enquiries and satisfy yourself of any information contained above before acting on it.

OzRoamer Publications, OzRoamer Pty. Ltd. and accepts no responsibility or liability for the information contained within

Safety Star Ratings are from [www.ancap.com.au](http://www.ancap.com.au)

Ratings may differ to the articles as they are written by different authors

\*Some Manufacturers eg: Nissan, require you to reduce the vehicles GVM for maximum tow ball rating

**OZ ROAMER**

# 4WD & SUV

**GUIDE 2013**

**TOWING  
GUIDE**

**WE REVIEW OVER  
50 4WD & SUV'S**

**OZROAMER  
BUYERS GUIDE**

**4WD VS AWD  
MYTH**

**ACCESSORISING  
YOUR 4WD**

**OZROAMER  
DIRECTORY**

**WE RATE OVER 150  
4WD & SUV'S FOR  
TOWING AND OFF  
ROAD ABILITY**

**PROJECT  
PAJERO**

**UPCOMING  
MODELS AND  
OTHER NEWS**

**RRP \$9.99**

**2013 | ISSUE 2**

